

Good data, great outcomes, confident investors: what REG can do for your region

RCA Forum

4 December 2025

Road Efficiency Group

Te Ringa Maimoa



REG 10-year strategy: four focus areas

1. Asset Management
2. Value for Money
3. Investment Confidence
4. Data and Evidence



GPS priority – standardising maintenance processes to find efficiency

- Expand performance monitoring and assessments
- Provide nationally consistent condition data for 100% of sealed local roads
- Develop new state highway and local road reporting
- Expand benchmarking of RCA and NZTA performance
- Establish guidance and competency frameworks
- Promote existing Transport Insights monitoring



Transport Insights - a comprehensive resource for RCAs

TRANSPORT
INSIGHTS

Whakatane District Council

Search...

Sign In

Home

Competency Assessment

Performance

ONRC

ONF

Data Quality

Evidence

Help & Support

→

NEW SEAL

Performance Dashboard

🔔 DID YOU KNOW?

Click the map toggle on the [Performance Dashboard](#) to see the NZ map.

→

ONF Reporting

🔧 NEW FEATURE

See the new national, regional and state highway reporting in the [Performance Dashboard](#).

→

Data Quality Dashboard

➕ GETTING STARTED

[New to Transport Insights?](#)

[The Basics](#)

COMING SOON

OCTOBER, 2025

Finalised Data Quality Report PDFs

DECEMBER, 2025

Next Transport Insights release

About

Contact

Disclaimer

Privacy

Newletters

© NZ Transport Agency Waka Kotahi.

All rights reserved.

Road Efficiency Group

Te Ringa Maimoa

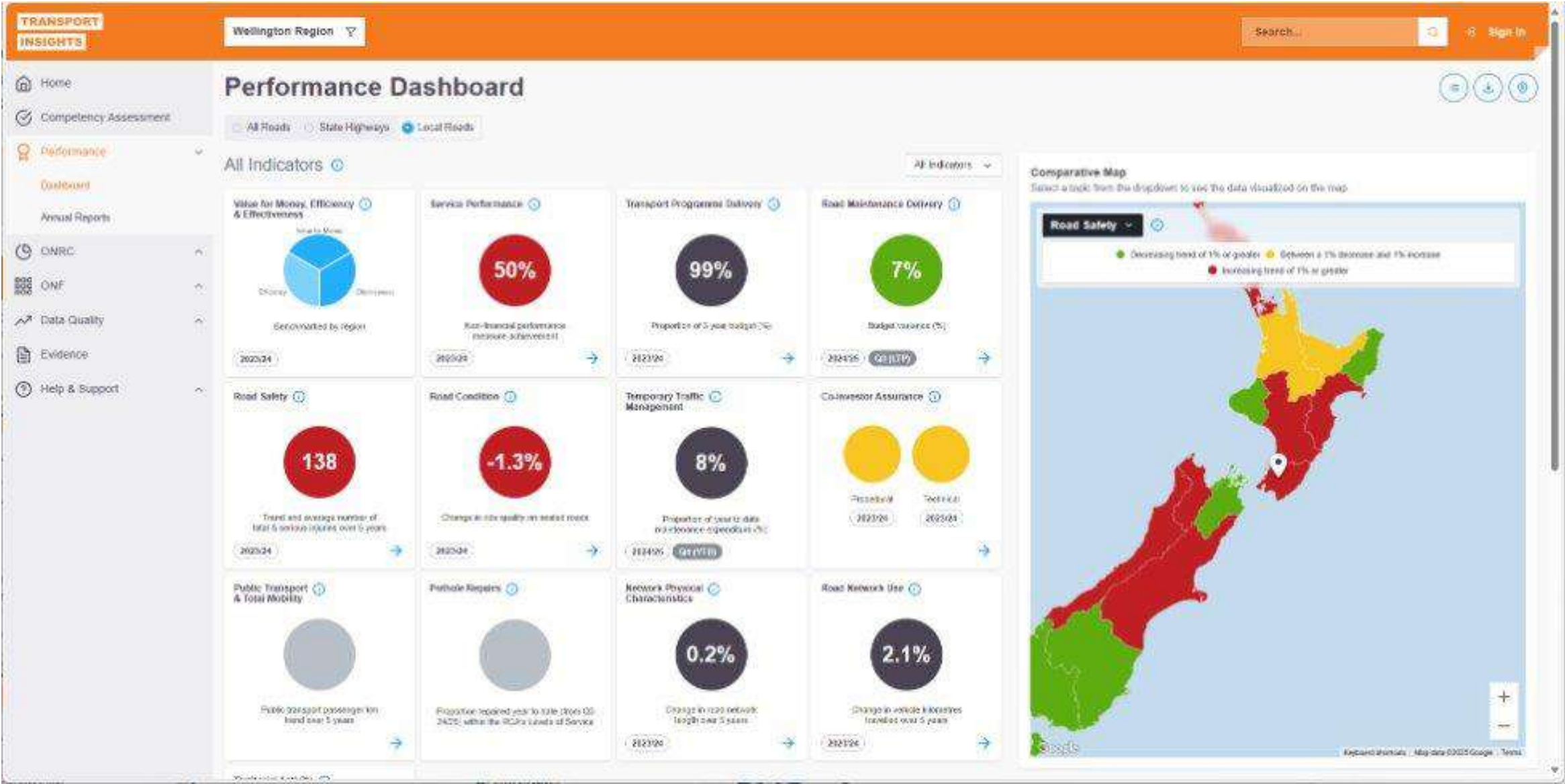
NZ TRANSPORT
AGENCY

Te Kāwanatanga o Aotearoa
New Zealand Government

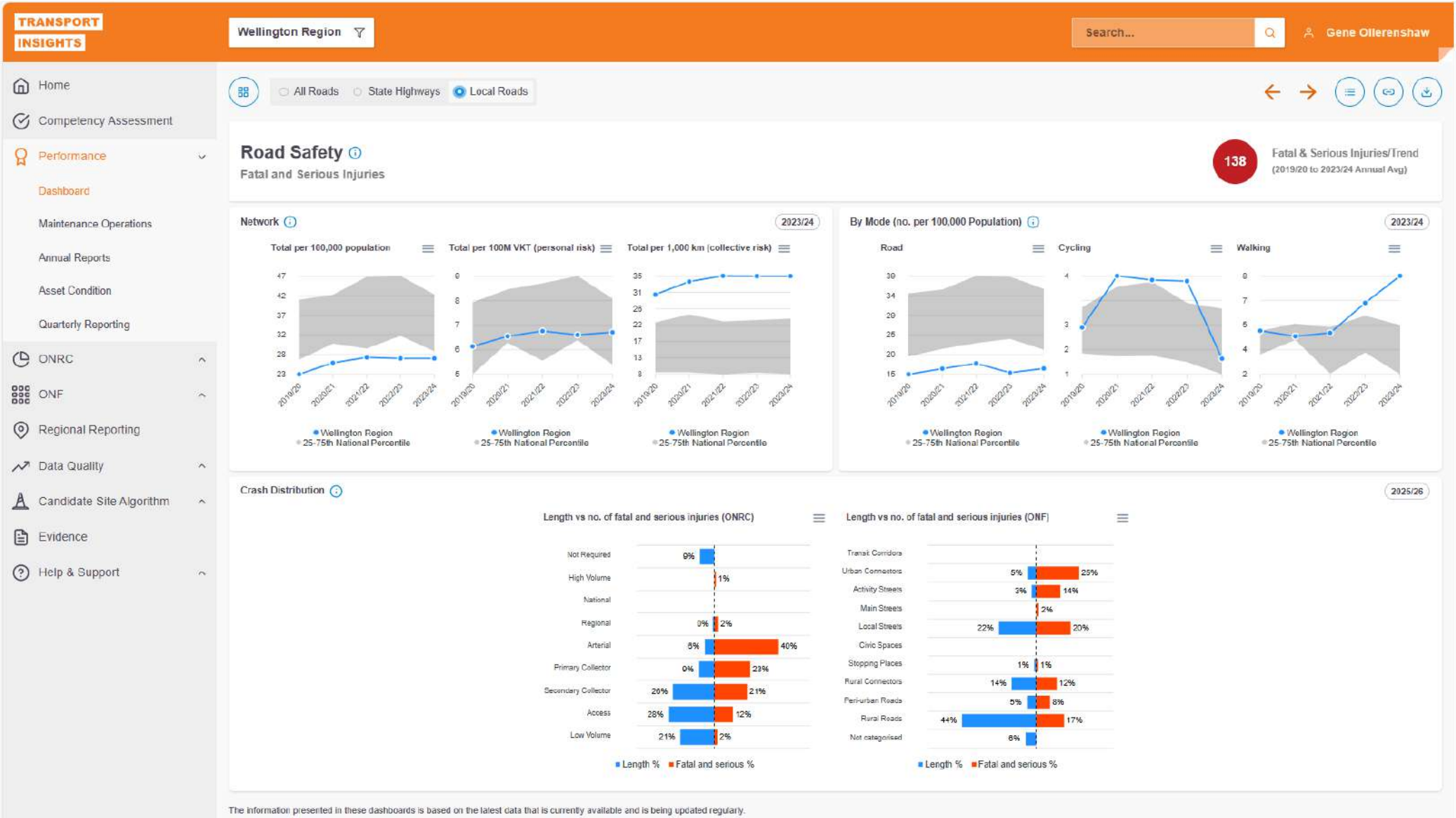
Road Efficiency Group | Te Ringa Maimoa

4

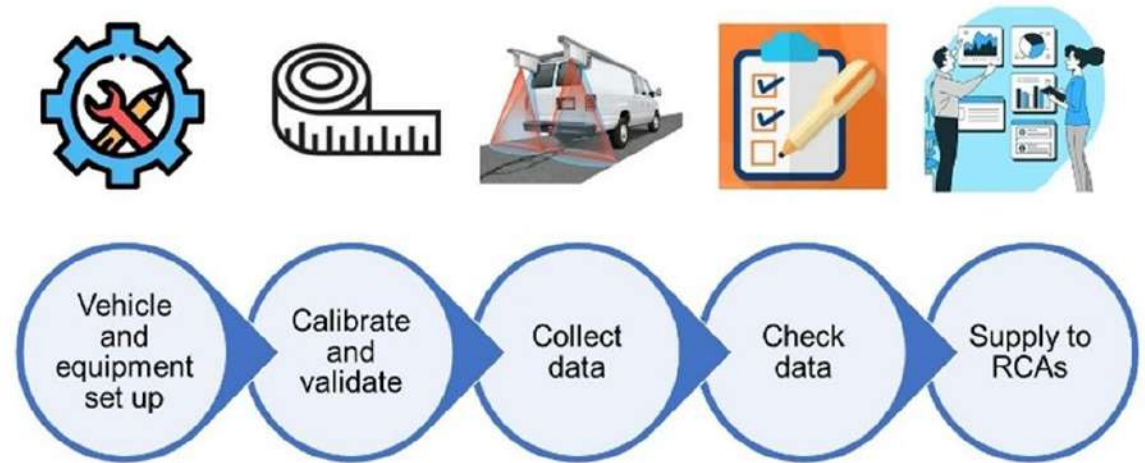
National and region reporting



Region reporting – safety drill down for local roads

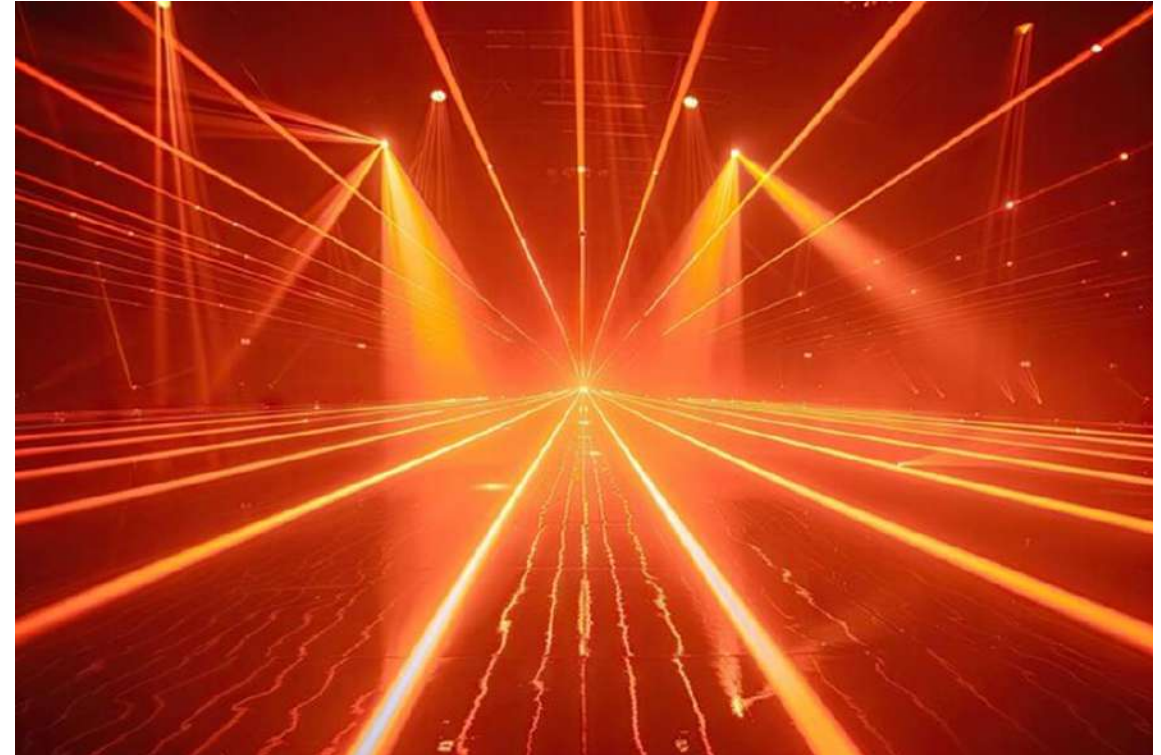


Consistent Condition Data Collection project



CCDC: Year 1

- More than 74,000 lane-kms surveyed
- Data independently quality assured
- Delivered to road controlling authorities asset systems
- Smooth Travel Exposure – consistent methodology adopted
- Data being used and queries coming through
- Network data issues need to be resolved by RCAs



CCDC: Year 2

- RCA Planning meetings held with over 50 RCAs
- Surveying underway for 5 RCAs, and completed for 13
- Online tracker updated every week

Using the data:

- Asset management planning
- Treatment selection
- Benchmarking and comparison – new indices and tools to support data use



Supporting transport practitioners into the future

NZ transport sector has:

- Shortage of skilled practitioners
- Inconsistent understanding of what 'good' looks like.

The REG Competency Project:

- Develop a comprehensive framework and assessment
- Clearly define roles and transport planning and delivery activities.
- Identify skills gaps,
- Promote professional development
- Ensure our transport sector effectively supports New Zealand's future.



Our challenge to you

- 1) Understand your data
www.transportinsights.nz
- 2) Learn from your peers
- 3) Act to improve performance

