

KEEPING OUR ROADS OPEN - Resilience



The project at a glance – quick reminder

RESILIENCE KEEPING OUR ROADS OPEN

Resilience is about preserving and quickly restoring access to the network in the face of unplanned events.



Increasing
robustness
and improving
alternate
routes

KEY ASPECTS

Decreasing
the recovery
time

WHAT THE TRANSPORT AGENCY ALREADY HAS UNDERWAY?

- » Resilience emergency response plans
- » Greater resilience and better alternate routes being built
- » Improved scour protection and erosion control
- » Well advanced seismic strengthening
- » Ongoing maintenance activities, reducing blackspots
- » Avalanche control and rock fall management

WHAT IS THE RESILIENCE PROJECT DOING?

The Resilience Project has a number of work-streams that aim to deliver these outputs:

- » Up to date, field-tested, **business continuity plans and emergency response plans**
- » Evidence-based **tools and processes** to assess resilience risk and strategic responses
- » An expanded programme of targeted **improvements and maintenance** activities
- » Online, interactive **detour maps**.
- » Closer **links with key partners** (Local Government NZ, New Zealand Lifelines)

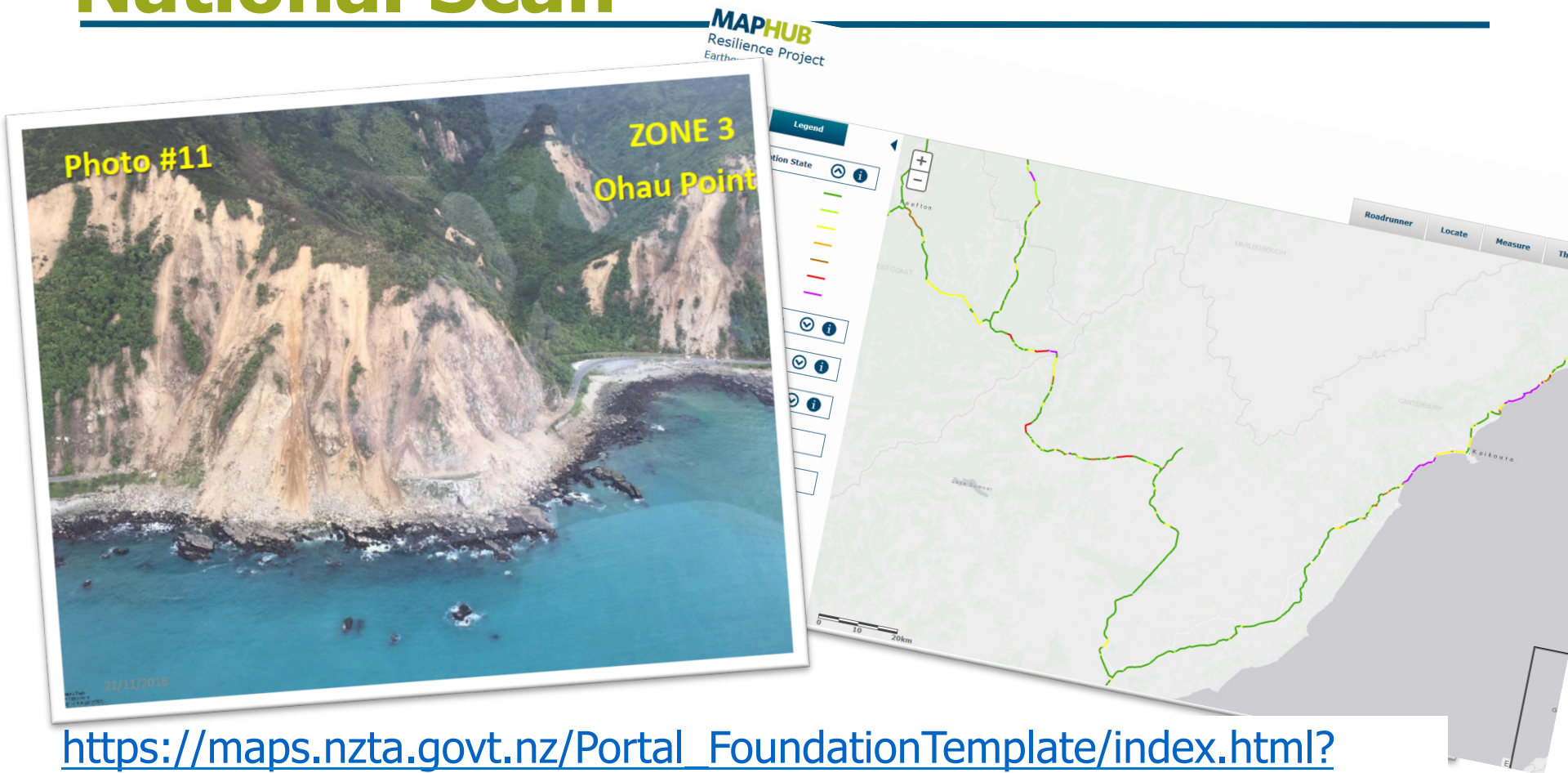
THESE ACTIVITIES BECOME PART OF BAU ON COMPLETION



Emergency Response Planning



Hazard Exposure Evaluation National Scan



[https://maps.nzta.govt.nz/Portal_FoundationTemplate/index.html?
appid=cd217bdb4e574a12a96c2156a9dcd fed](https://maps.nzta.govt.nz/Portal_FoundationTemplate/index.html?appid=cd217bdb4e574a12a96c2156a9dcd fed)



Resilience Insights

Reviewed Top 9 Corridor Strategic & Programme business cases

Key insights areas cover:

- definitions
- strategic context
- problem statements
- benefit statements
- evidence base
- performance measures
- assessment methods
- investment objectives
- alternative routes
- social impacts
- strategic responses



Have We Covered What You Need?



Contact:
Stuart Woods
stuart.woods@nzta.govt.nz

**Web: [http://
www.nzta.govt.nz/roads-
and-rail/highways-
information-portal/technical-
disciplines/resilience-project](http://www.nzta.govt.nz/roads-and-rail/highways-information-portal/technical-disciplines/resilience-project)**

