

REG | THE ROAD EFFICIENCY GROUP

Presentation to RCA Forum

27 November 2015

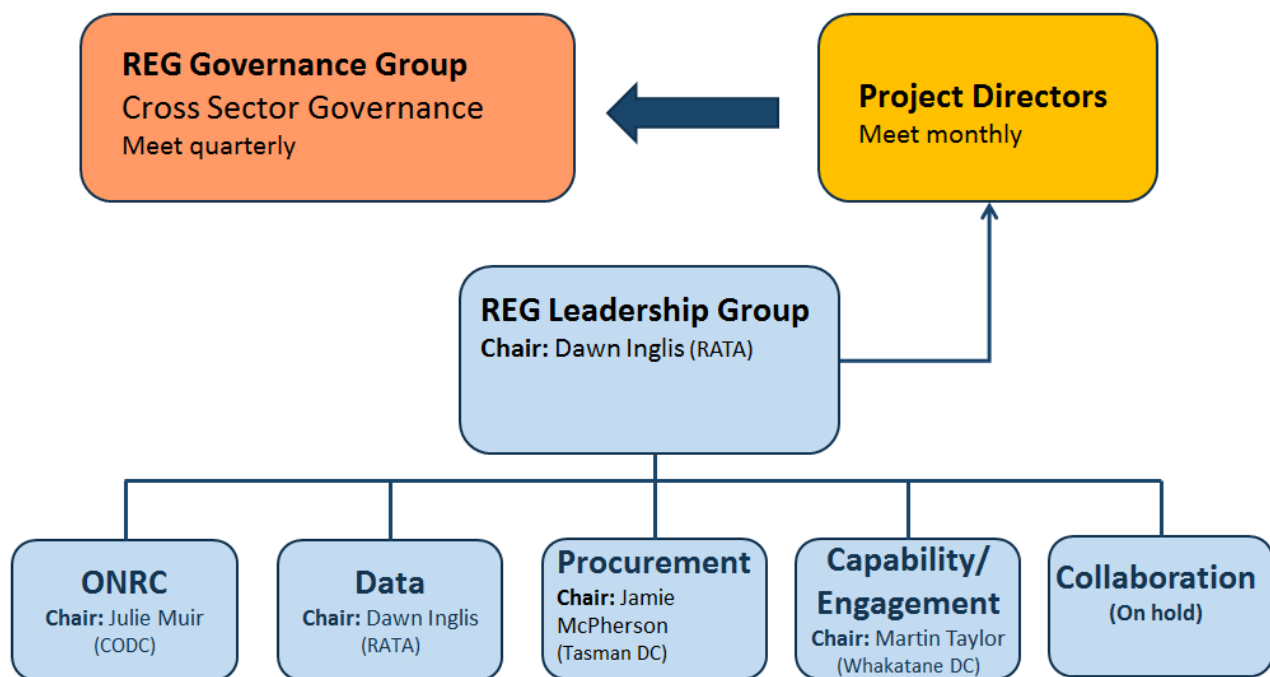
Dawn Inglis, REG Leadership Group



Road Efficiency Group – by the sector, for the sector

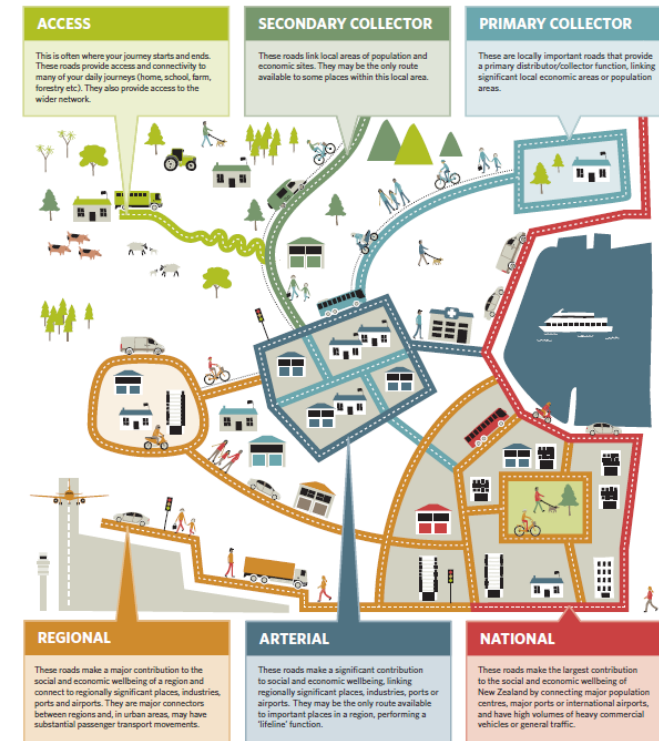
REG | THE ROAD EFFICIENCY GROUP

REG Operating Structure

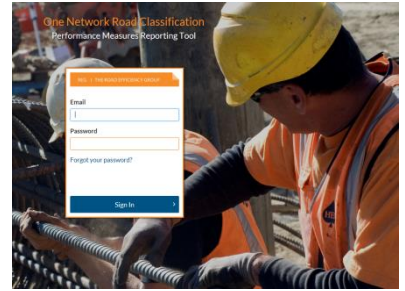


ONRC Implementation:

- **Reissuing Guidance Document**
 - Document 1 – Outcome Measures
 - Document 2 – Technical Performance Measures
- **Providing a timeline and tasks for RCA's to December 2017**
- **Providing examples of work done by RCA's**
- **Support in place – Julie Muir and Tony Lange**



Data



- **ONRC Performance Measures Reporting Tool**
- **Looking at data quality issues**
- **Process for sector appropriate reporting**



Capability and Engagement

- **Regional ONRC Workshops**
- **Supporting training and advice around BCA**
- **Understanding sector need for training**



Procurement

- **Assessment and analysis of maintenance contract models**
 - Looking at NZ examples and experience
 - What are key factors for success
 - Guidance on selection of most appropriate model
 - To be published early-mid 2016
- **Collaboration in Procurement**
- **Tools to support good/efficient practice such as standardised 'ezy-docs'**



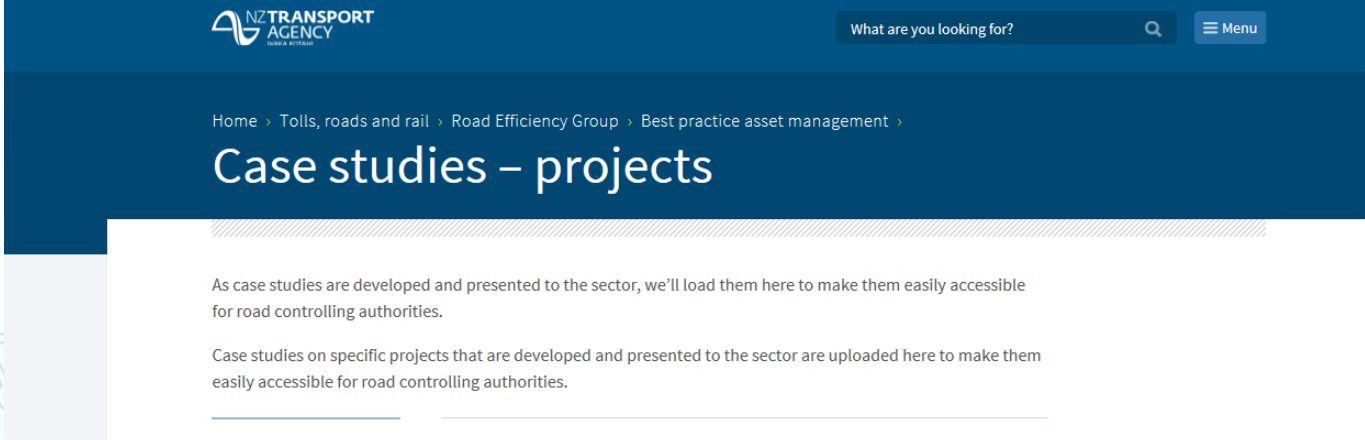
Case Studies

- **Thank you to RCA Forum for financial support**
- **Published in 2015:**
 - **Maintaining and renewing sealed pavements under ONRC**
 - **Incorporating the ONRC into AM Planning (CODC)**
 - **Real time asset management (Lag vs Real Time measures)**
 - **RATA – A regional collaboration**
 - **DIA Non Financial Performance Measures – Waikato**
 - **State Highway Asset Management Plan**



Case Studies

- **Underway:**
 - **Optimised Decision Making in CODC**
 - **Tairāwhiti Roads – A local road/state highway collaboration**
 - **Auckland Transport AMP**
 - **Southland – Economic Network Plan**



NZ TRANSPORT AGENCY
ROAD EFFICIENCY GROUP


What are you looking for?

Home > Tolls, roads and rail > Road Efficiency Group > Best practice asset management >

Case studies – projects

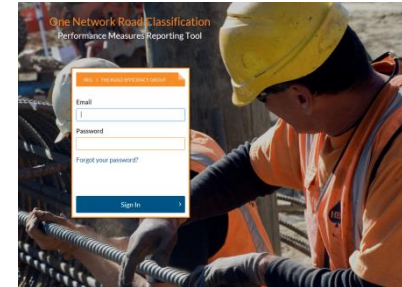
As case studies are developed and presented to the sector, we'll load them here to make them easily accessible for road controlling authorities.

Case studies on specific projects that are developed and presented to the sector are uploaded here to make them easily accessible for road controlling authorities.



ONRC Performance Measures Reporting Tool

- **Tool is now available**
 - **Four measures currently available**



🏠 ONRC Performance Measures Reporting Tool

Waipa District Council



Reports

Safety OM1 - Injury Counts - Fatal & Serious >

Safety PM6 - Intersection Injuries - Fatal & Serious >

Amenity OM2 - Average Roughness (NAASRA) >

Efficiency EM2 - Chipseal Resurfacing Quantity >



ONRC Performance Measures Reporting Tool

- **10 Further measures by mid-December**
 - **Amenity OM1 – Smooth Travel Exposure**
 - **Amenity PM1 – Peak roughness**
 - **Efficiency EM10 – Maintenance costs (routine pavement maintenance)**
 - **Efficiency EM3 – Quantity resurfacing Asphalt (lane km and m2)**
 - **Efficiency EM6 – Average life of sealed surfaces renewed**
 - **Efficiency EM9 – Cost of resurfacing works completed (Chipseal and Asphalt)**
 - **Safety OM2 – Collective risk (crash density)**
 - **Safety OM3 – Personal risk (crash rate)**
 - **Safety PM13 – Crashes involving vulnerable users**
 - **Safety PM 5 – Crashes in wet/dark/loss of control**



Visit
www.nzta.govt.nz/roads-and-rail/road-efficiency-group

for info on Road Efficiency Group

Email:

Roadefficiencygroup@nzta.govt.nz

