



Robyn Gardener
Accident Compensation Corporation



Te Kaporeihana Āwhina Hunga Whara

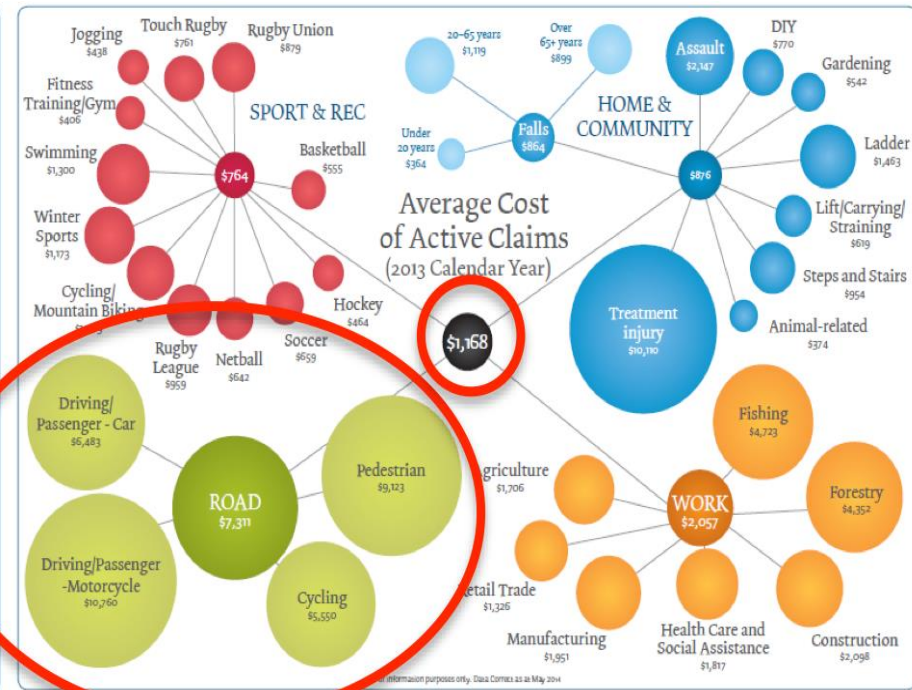
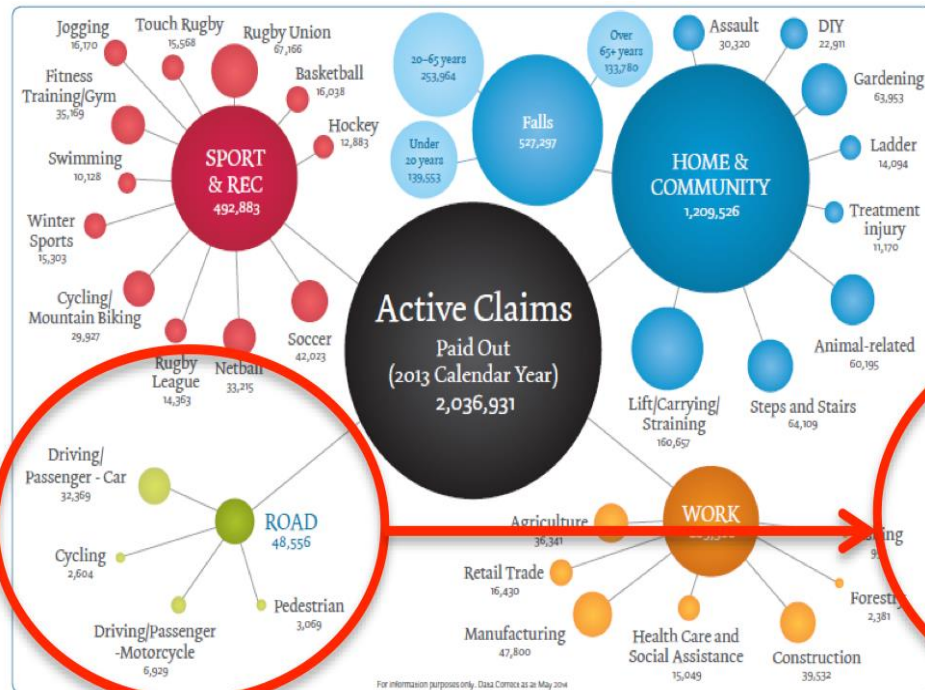


**We are.
LGNZ.**



- Background
- The project
 - Value

Context for ACC



Road - 2014: 32,512 new; 8,654 CAS-matched 30-35%; Cost: \$383m

Safer Journeys – new approach



- iRAP > 80 countries world-wide



- KiwiRAP – NZ SHs 2008



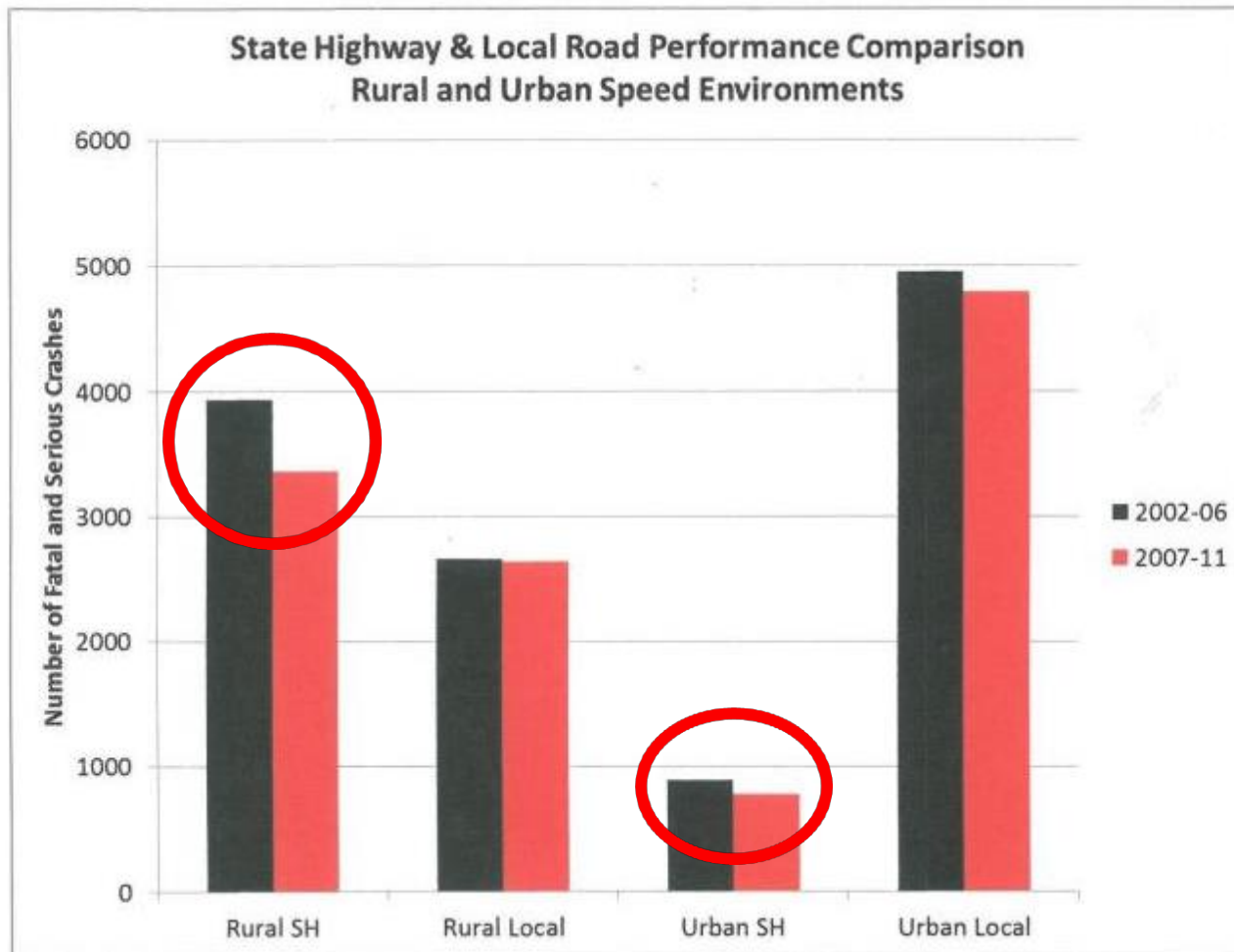
- Urban KiwiRAP – NZ LA trial 2012



10% of the road network with 50% of the crashes

New approach – results on SH

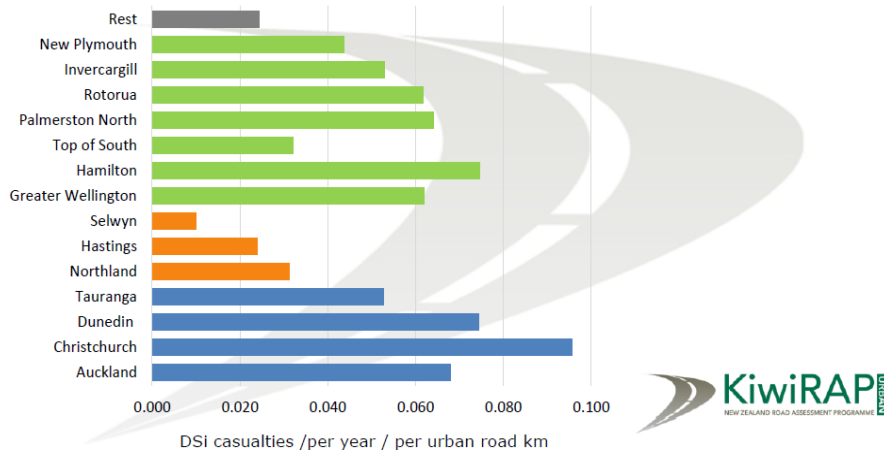
SH
15% rural
13% urban



LA
1% rural
3% urban

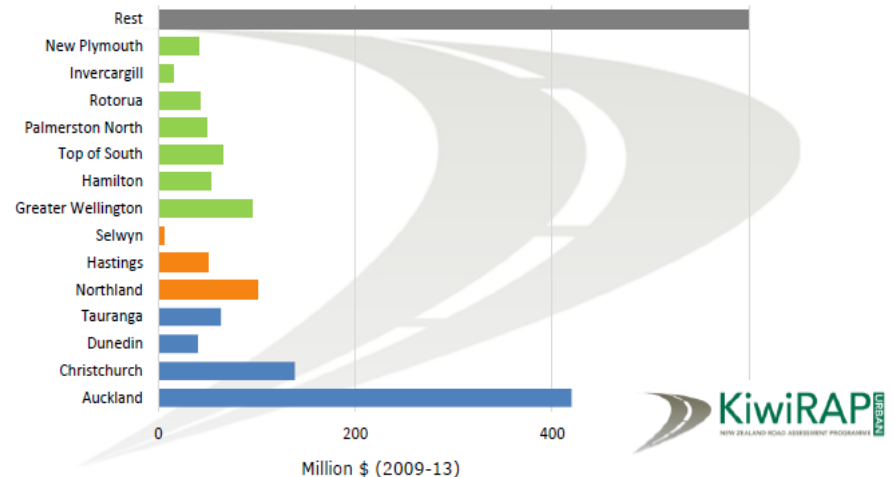
Opportunity on local roads

Expanding to Other Urban Networks:



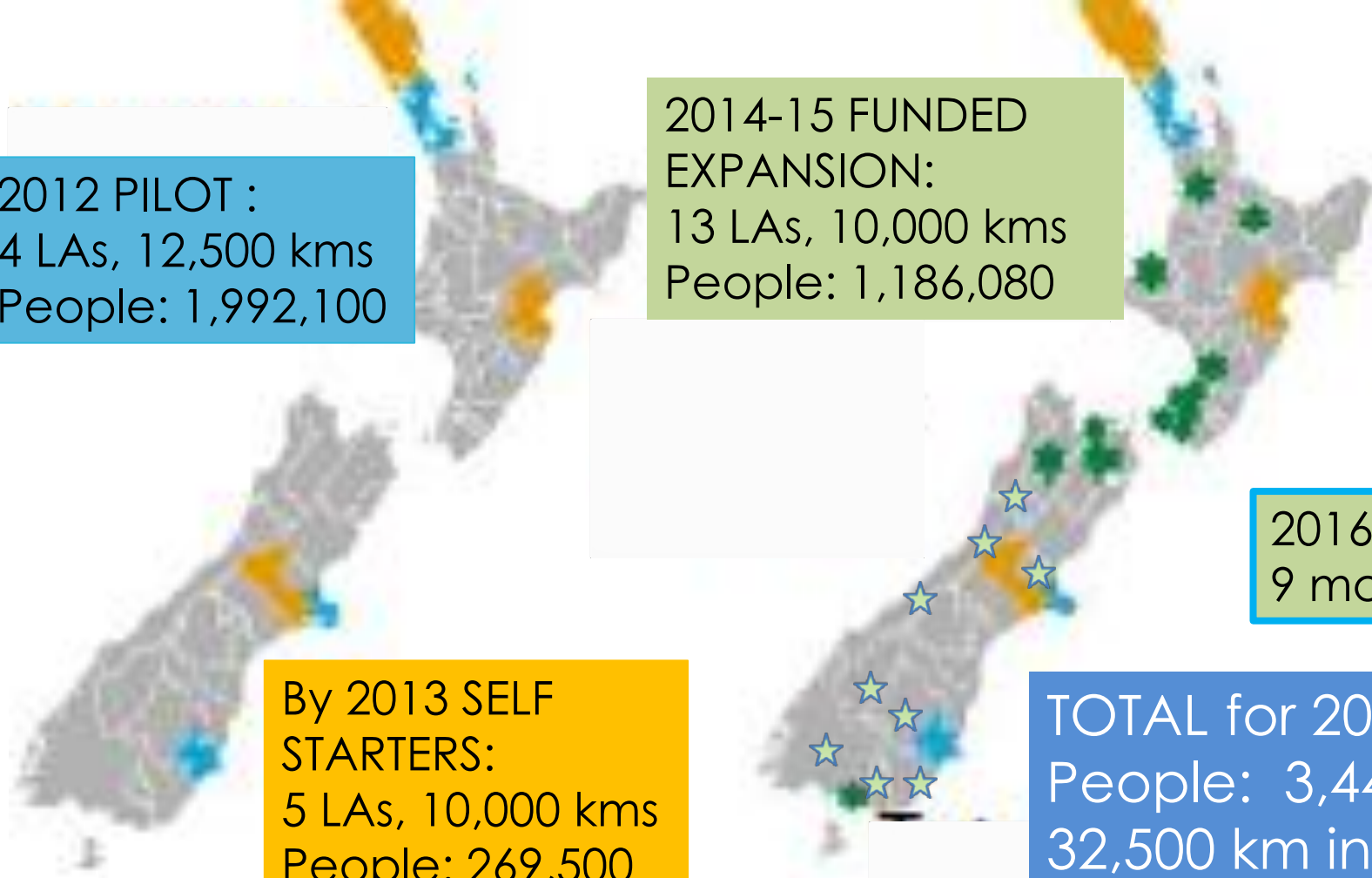
DSI casualties/
per year/
per urban road km

ACC Cost



ACC costs \$ millions (5-years)

The project



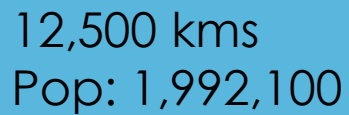
2012 PILOT :
4 LAs, 12,500 kms
People: 1,992,100

2014-15 FUNDED
EXPANSION:
13 LAs, 10,000 kms
People: 1,186,080

By 2013 SELF
STARTERS:
5 LAs, 10,000 kms
People: 269,500

2016 Offer:
9 more LAs

TOTAL for 2015:
People: 3,447,680
32,500 km in 22 LAs

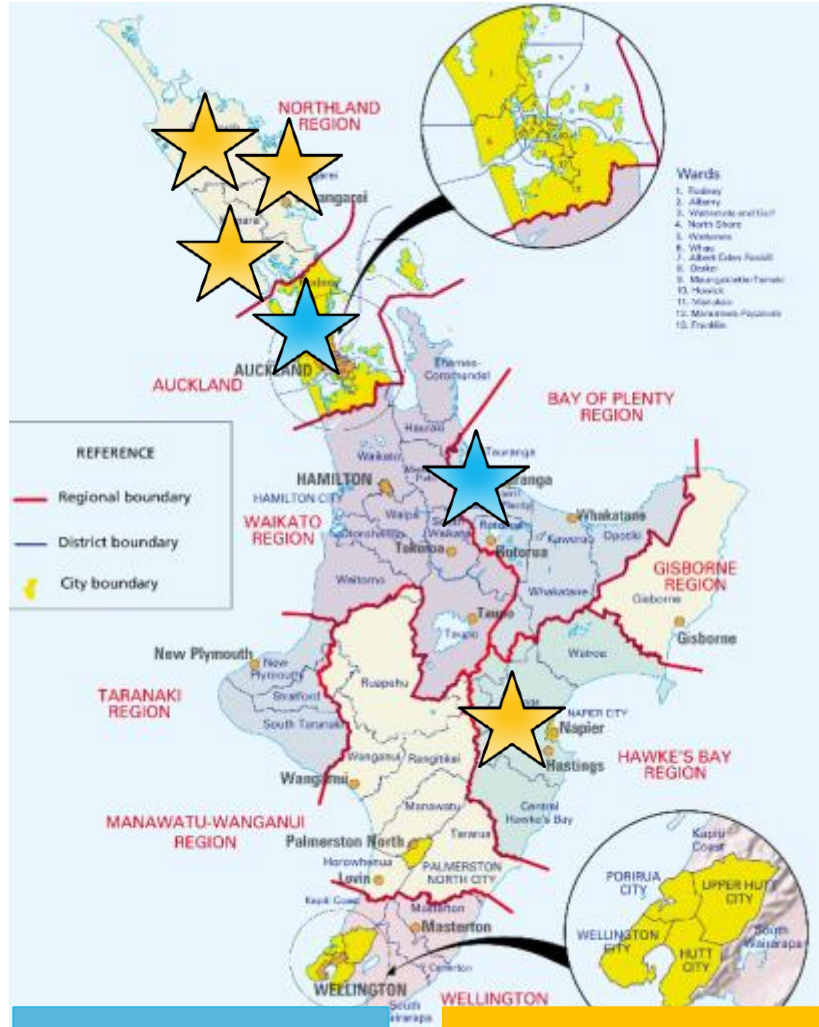




Trial – 4 in 2012

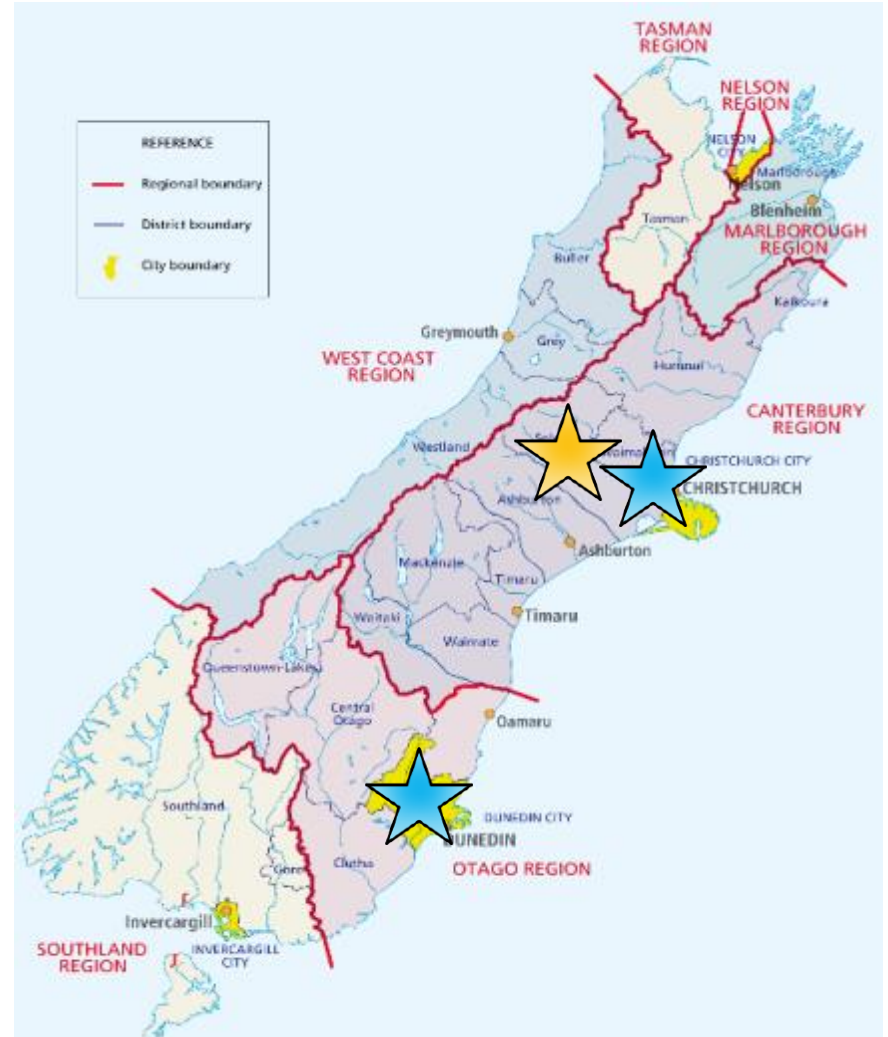


Self-funded – 5 by 2013



12,500 kms
Pop: 1,992,100

10,000 kms
Pop: 269,500





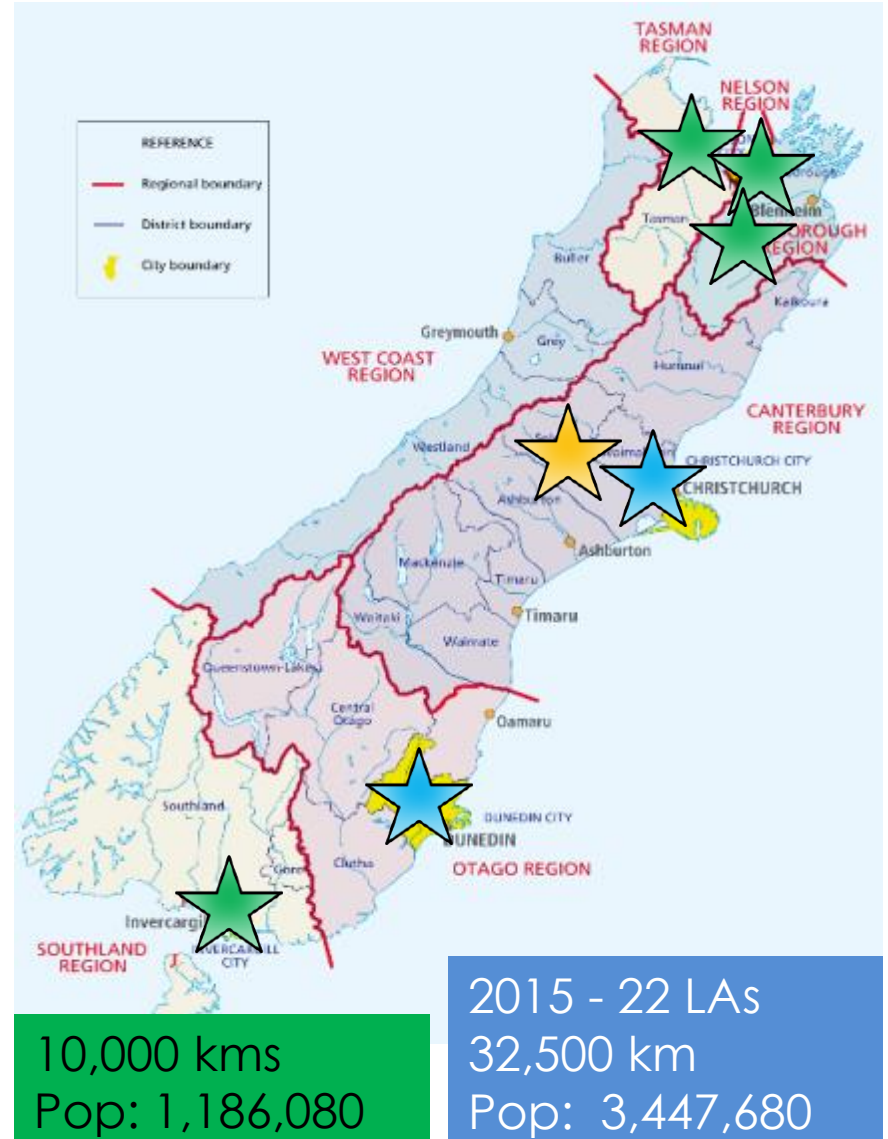
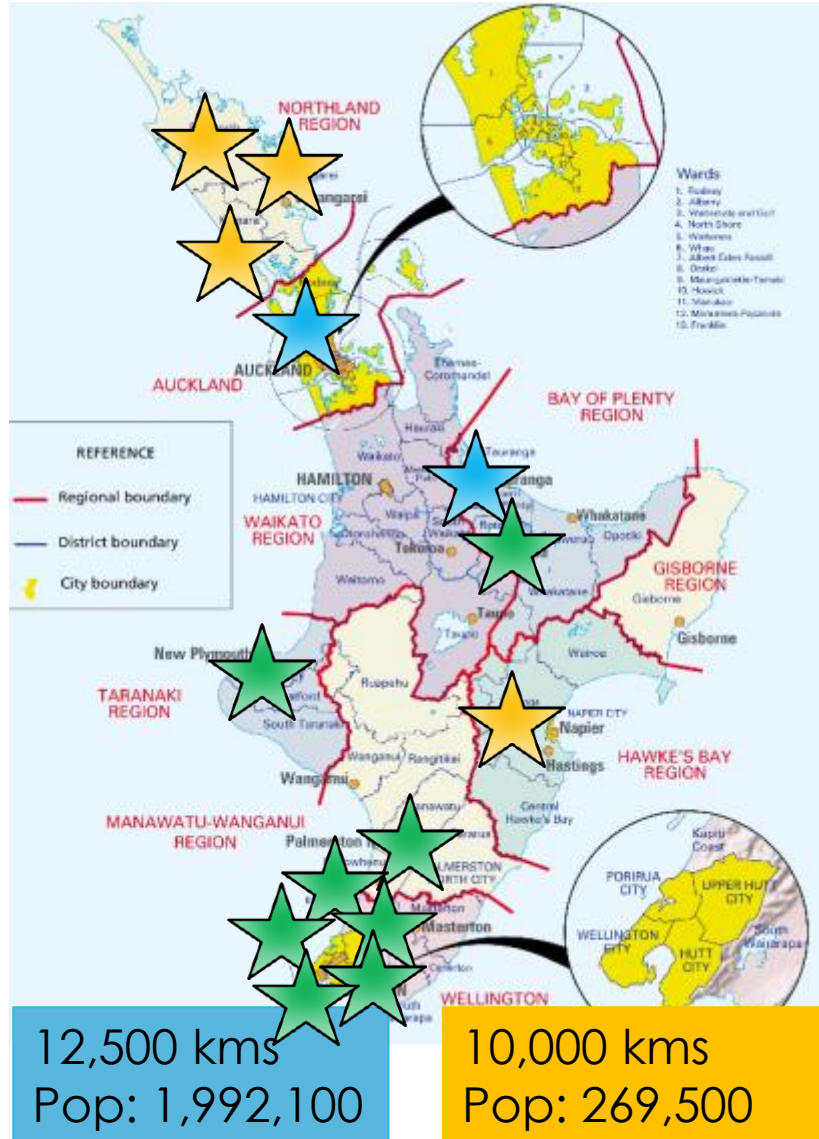
Trial: 4 in 2012



Self-funded: 5 by 2013

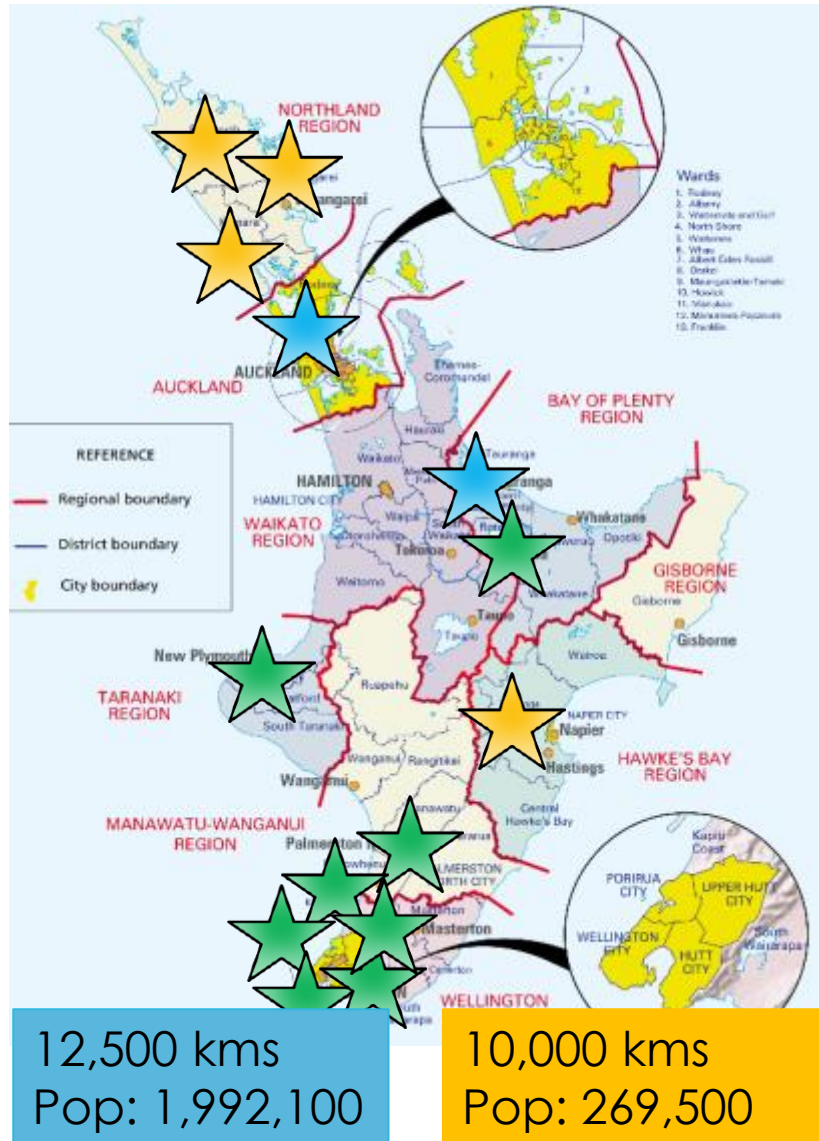


ACC: 13 in 2014/15



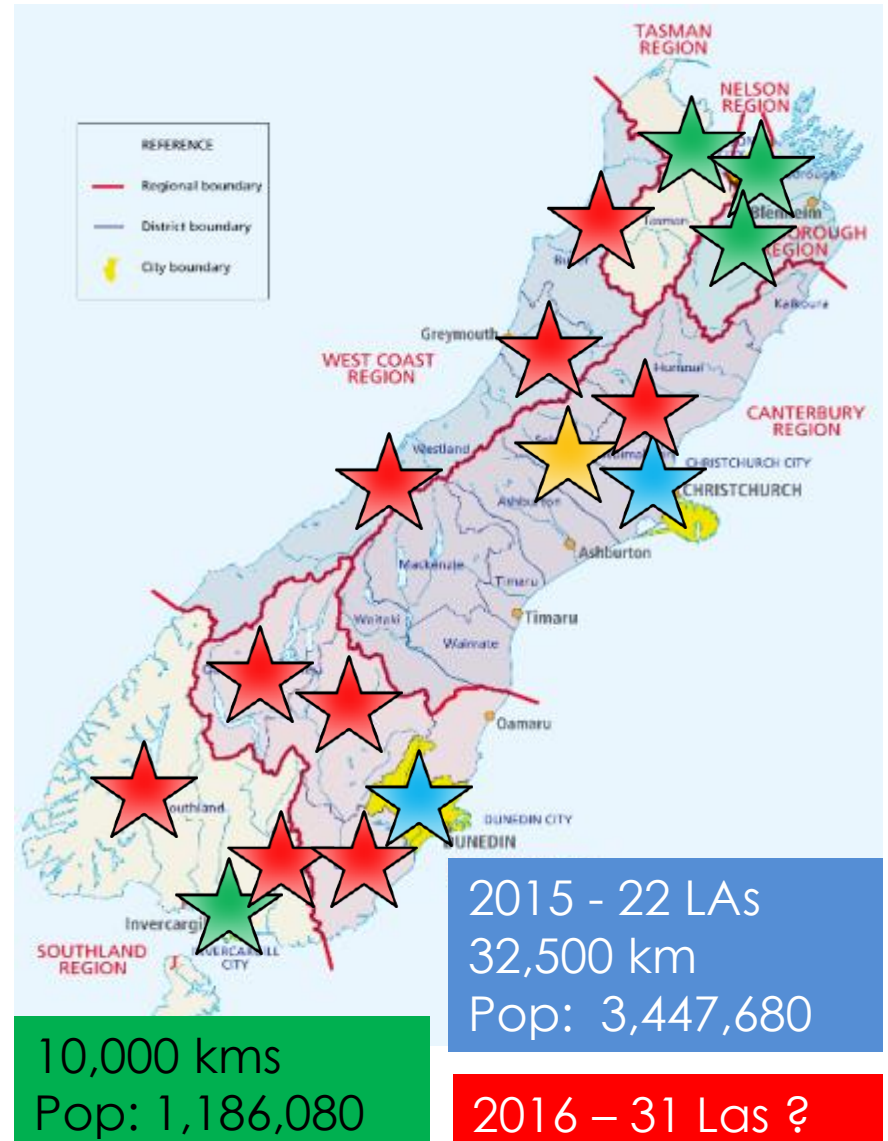
Trial: 4 in 2012

Self-funded: 5 by 2013



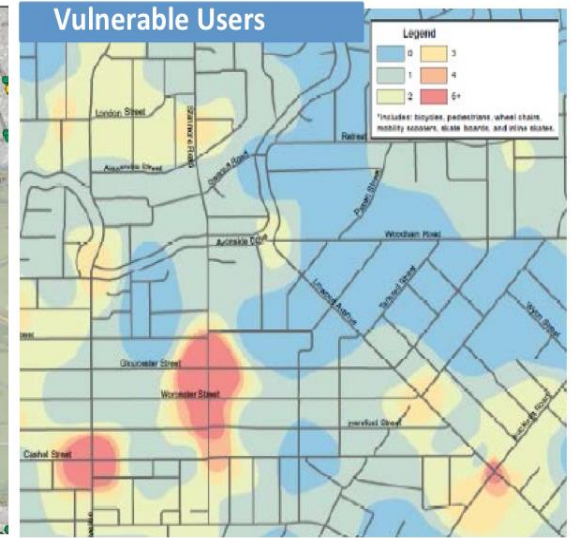
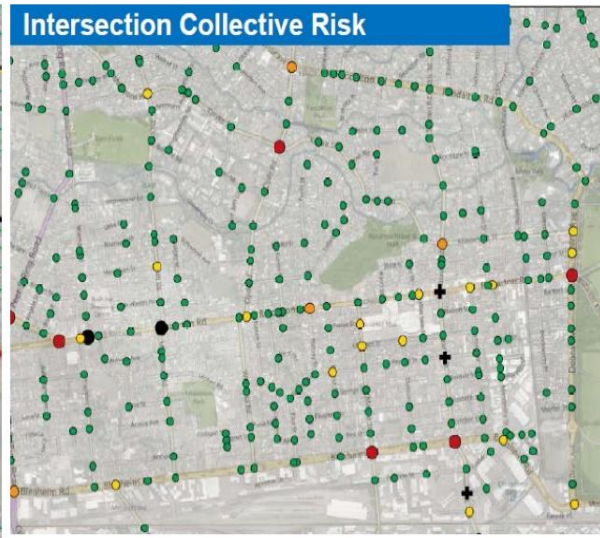
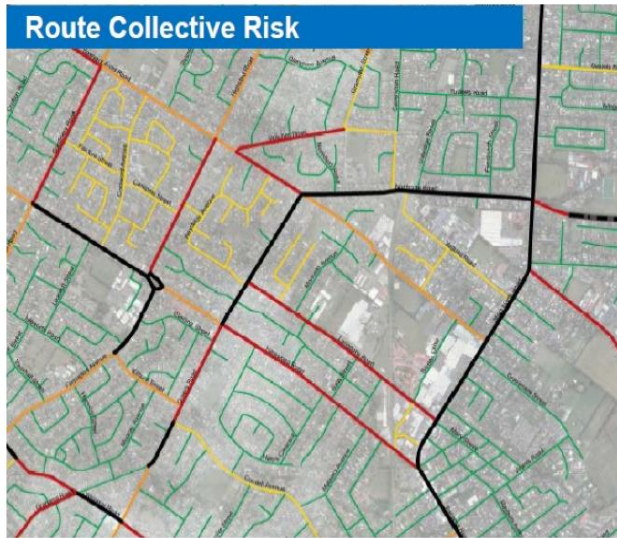
ACC: 13 in 2014/15

ACC: 9 offer 2016



Project progress

- *risk mapping completed*



Project progress

- *star rating contract*



<http://roadsafetyrisk.co.nz>

RoadSafety Risk



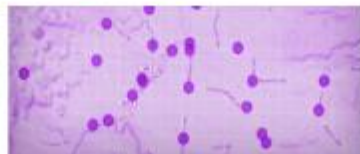
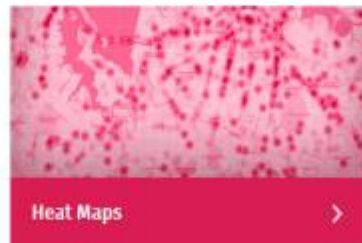
Home

Risk Maps

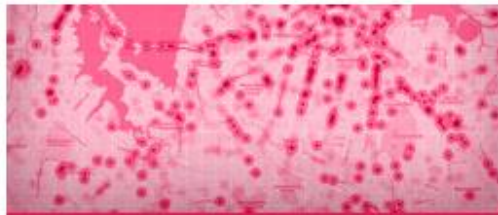
Urban KiwiRAP Info

Understanding Risk

 [Log in](#) | [Register](#)



<http://roadsafetyrisk.co.nz>



Heat Maps



Collective Risk



Personal Risk



Motorcyclist Risk



Detailed Collective Risk



View specific intersections & corridors
with a high number of fatal or serious
accidents



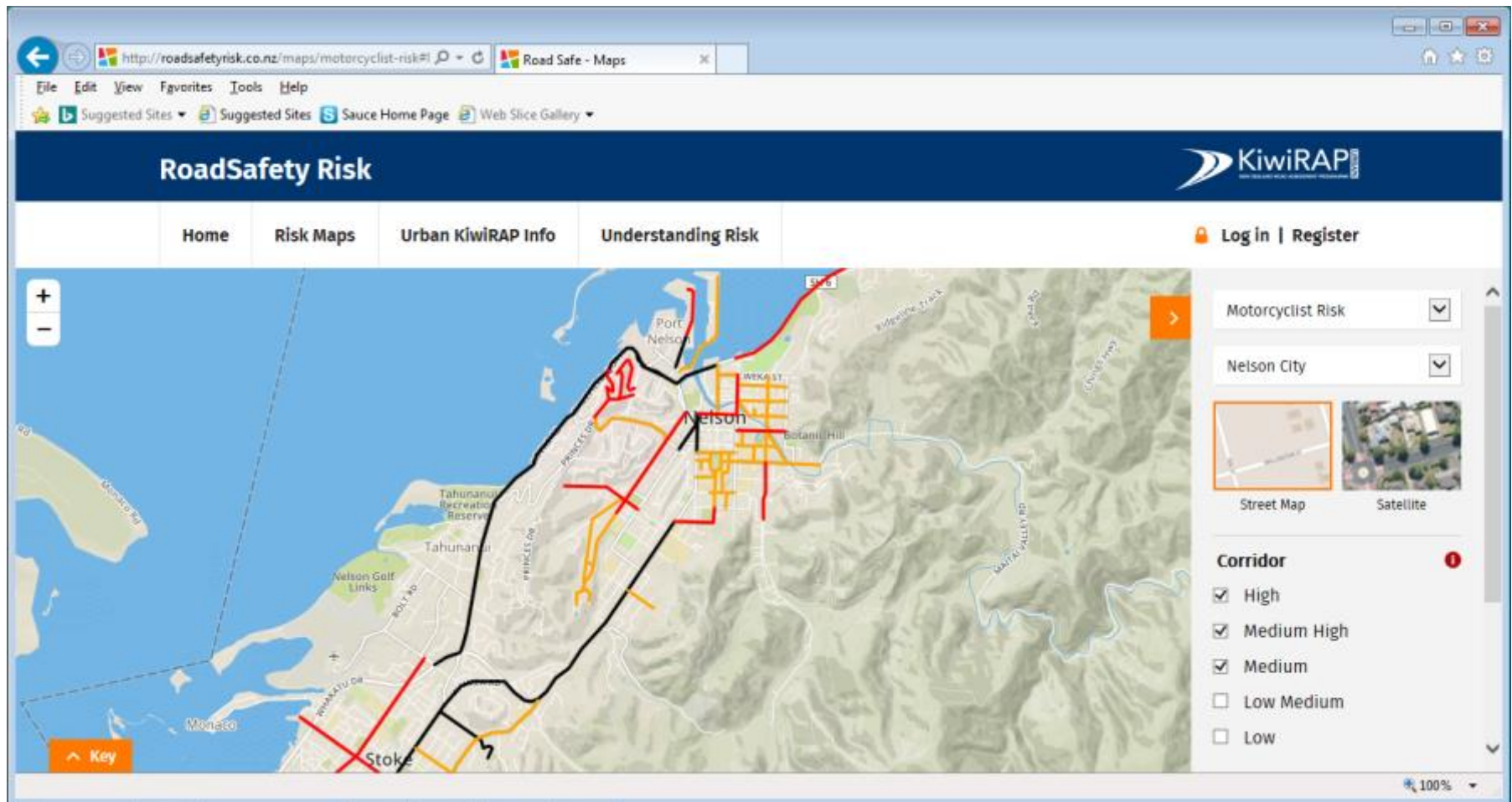
Detailed Personal Risk



Detailed Motorcyclist Risk



<http://roadsafetyrisk.co.nz>



<http://roadsafetyrisk.co.nz>

The screenshot displays the Road Safety Risk website interface. The browser address bar shows the URL <http://roadsafetyrisk.co.nz/maps/motorcyclist-risk#>. The website header includes the title "RoadSafety Risk" and the KiwiRAP logo. A navigation menu contains links for "Home", "Risk Maps", "Urban KiwiRAP Info", and "Understanding Risk". A "Log in | Register" link is also present. The main content area features a satellite map of Nelson City with a red line indicating a corridor. On the right side, there are dropdown menus for "Motorcyclist Risk" and "Nelson City". Below these are two map thumbnails: "Street Map" and "Satellite". A "Corridor" section on the right lists risk levels with checkboxes: "High" (checked), "Medium High" (checked), "Medium" (checked), "Low Medium" (unchecked), and "Low" (unchecked). A red notification icon is visible next to the "Corridor" heading. The bottom right corner shows a zoom level of "100%".

http://roadsafetyrisk.co.nz/maps/motorcyclist-risk#

Road Safe - Maps

File Edit View Favorites Tools Help

Suggested Sites Suggested Sites Sauce Home Page Web Slice Gallery

RoadSafety Risk

KiwiRAP

Home Risk Maps Urban KiwiRAP Info Understanding Risk

Log in | Register

Motorcyclist Risk

Nelson City

Street Map Satellite

Corridor

- ☒ High
- ☒ Medium High
- ☒ Medium
- ☐ Low Medium
- ☐ Low

100%

Using



Cross-organisational teams talking/acting:

- Shift road safety culture
- Working collectively to reduce road trauma



Using



- Road safety & engineers
- Planning and investment
- Communications
- Community

A partnership – *to provide
safer travel for all people*



Contact: robyn.gardener@acc.co.nz