



DOC's Roads – Managing roads throughout the remotest parts of NZ

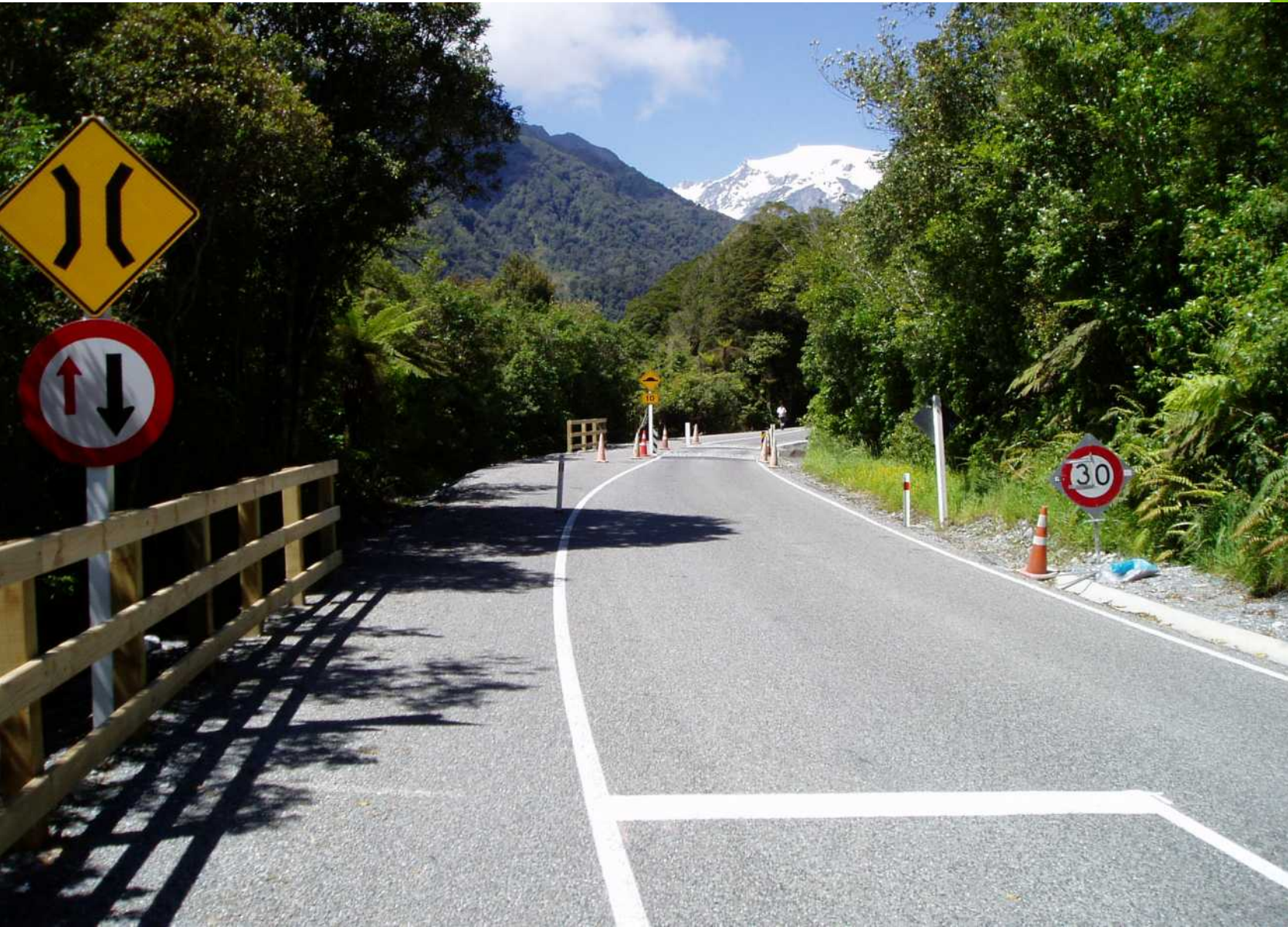




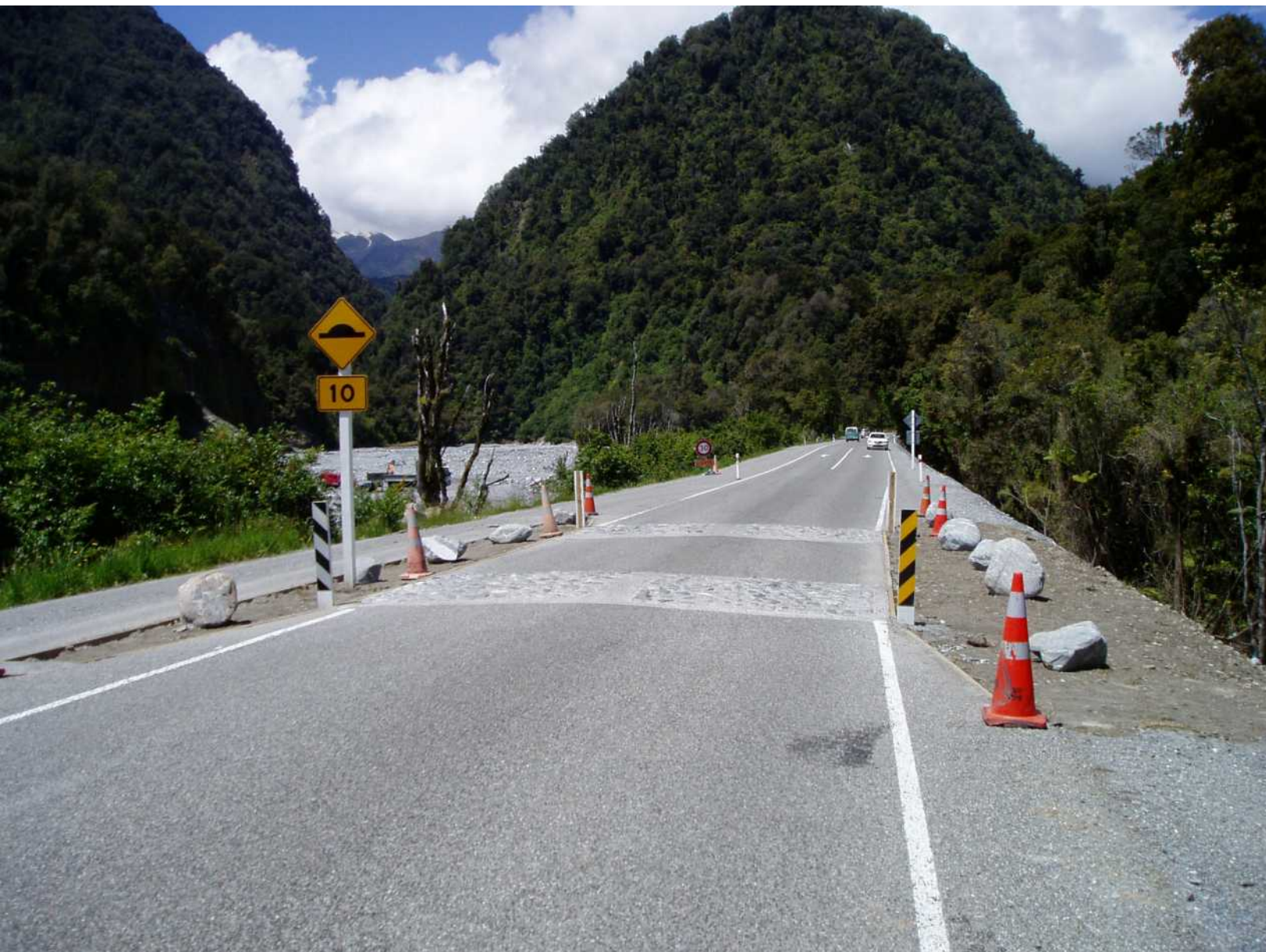
DOC's Roads

- DOC manages huts, tracks, structures, campsites, toilets
- 2,200 km of road
- In (almost) every part of NZ
- Connect with most RCA's roads
- Lead to tourism destinations
- Low volume
- Considerable 4WD network
- Not in great condition

Franz Josef Glacier Access Road



Franz Josef Glacier Access Road



Department of
Conservation
Te Papa Atawhai

Owawenga Road (Pureora)



Fletchers Road (Pureora)



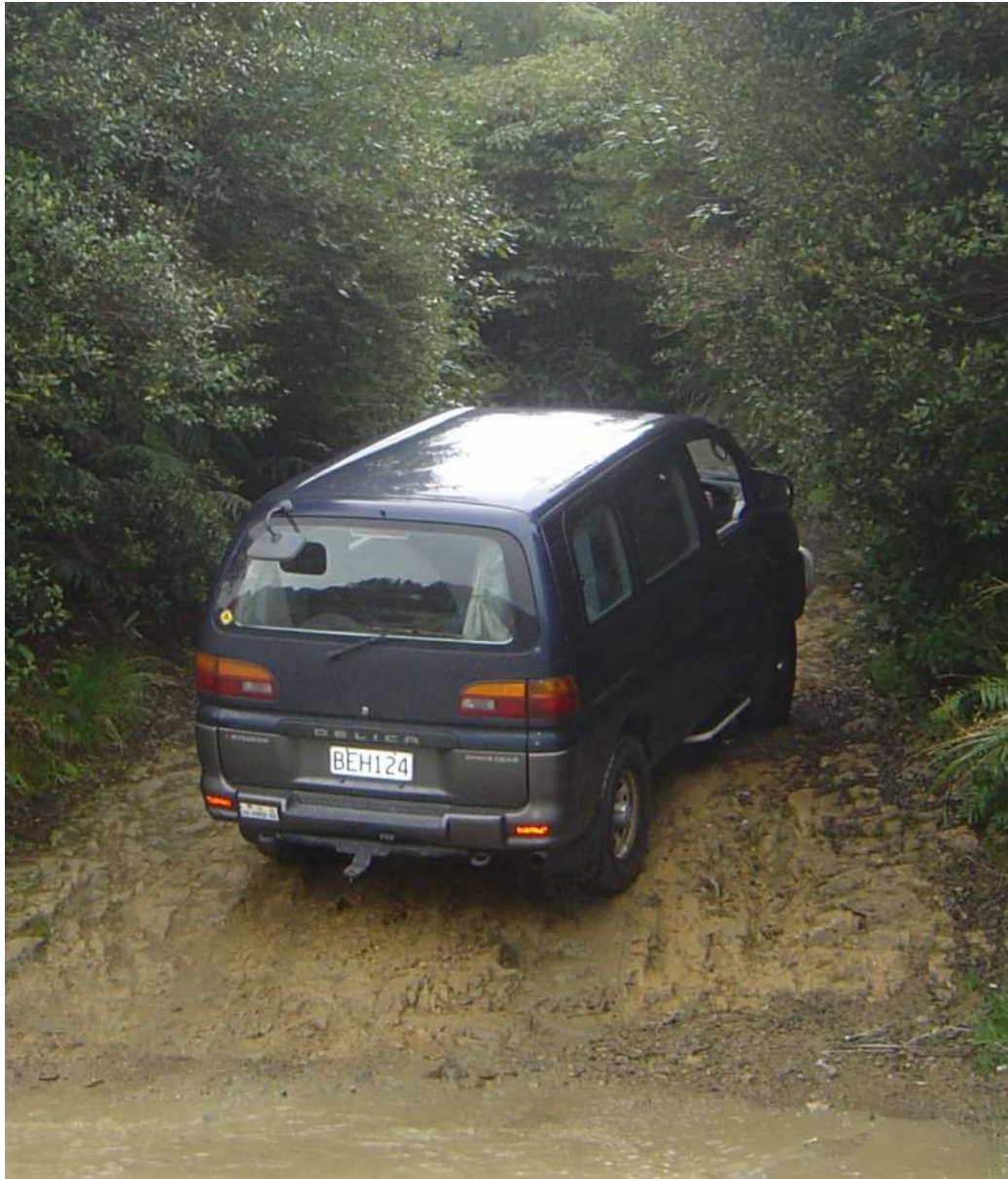
Bog Inn Road (Pureora)



Manukerikia East Branch Road (Central Otago)



Akatarawa to Renata Road (Tararua Forest Park)



Department of
Conservation
Te Papa Atawhai

Akatarawa to Renata Road (Tararua Forest Park)



Department of
Conservation
Te Papa Atawhai



DOC Roads – the problem

- **DOC has failed as a Road Controlling Authority to systematically manage roads on public conservation land as part of the national network of roads.**
- **This has resulted in reactive maintenance and deterioration of the road assets for users accessing conservation land**
- **By not managing roads we are failing to leverage the potential value of public conservation land to the NZ visitor economy (tourism)**



Benefits of investing in roads

- **Better able to mitigate the risk to visitors and other road users whilst on public conservation land**
- **A safe and sustainable network of roads able to meet the growth in visitor numbers**

Who uses DOC's roads?

- Travelling international and domestic short stop and day visitors
- **Scenic/"tourist" drivers**
- **Businesses – tourism concessionaires, farming, forestry, communications etc.**
- **Trampers, walkers, hunters, fishers, mountain bikers, horse riders**
- **Campers, including freedom campers**
- **Off-road enthusiasts**
- **Volunteers, community groups, school groups, DOC staff**



What is DOC doing to address “the problem”?

- Road improvement (“transition”) plan
- Inventory and inspection completed
- Initial DOC road classification (to fit One Network Road Classification)
- 10 year maintenance and renewal plan
- Developing activity management plan
- Working closely with NZTA
- Planning to closely collaborate with RCAs in managing roads that connect with theirs
- Aiming for funding in 2018-2021 National Land Transport Programme



Macaulay Valley, Lake Tekapo



Mavora Lakes, Southland



Kopuwai Conservation
Area, Alexandra

