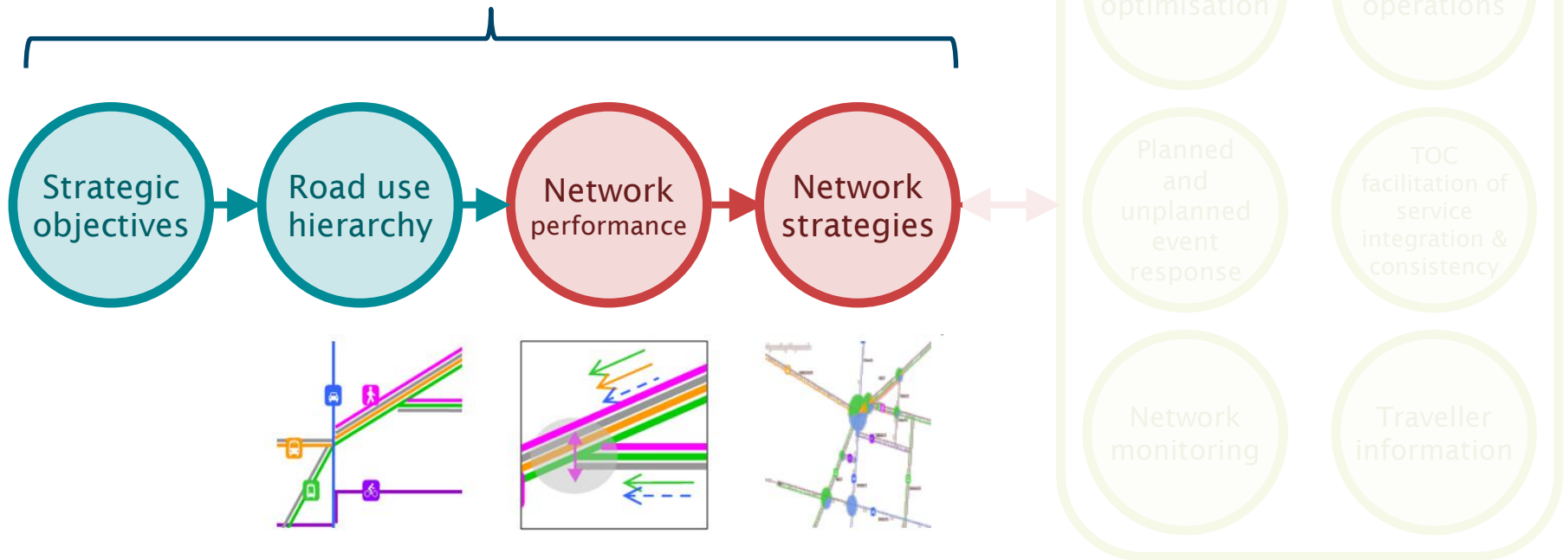


Network Operating Plans

SmartRoads principles
(tool used only in urban areas)



Operational Services



Network Operations

Planning to deliver

Planning and M&O to Collaborate

M&O to deliver

Strategic objectives

Road use hierarchy

Network performance

Network strategies

Signal optimisation

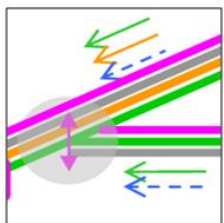
Signal operations

Planned and unplanned event response

TOC facilitation of service integration & consistency

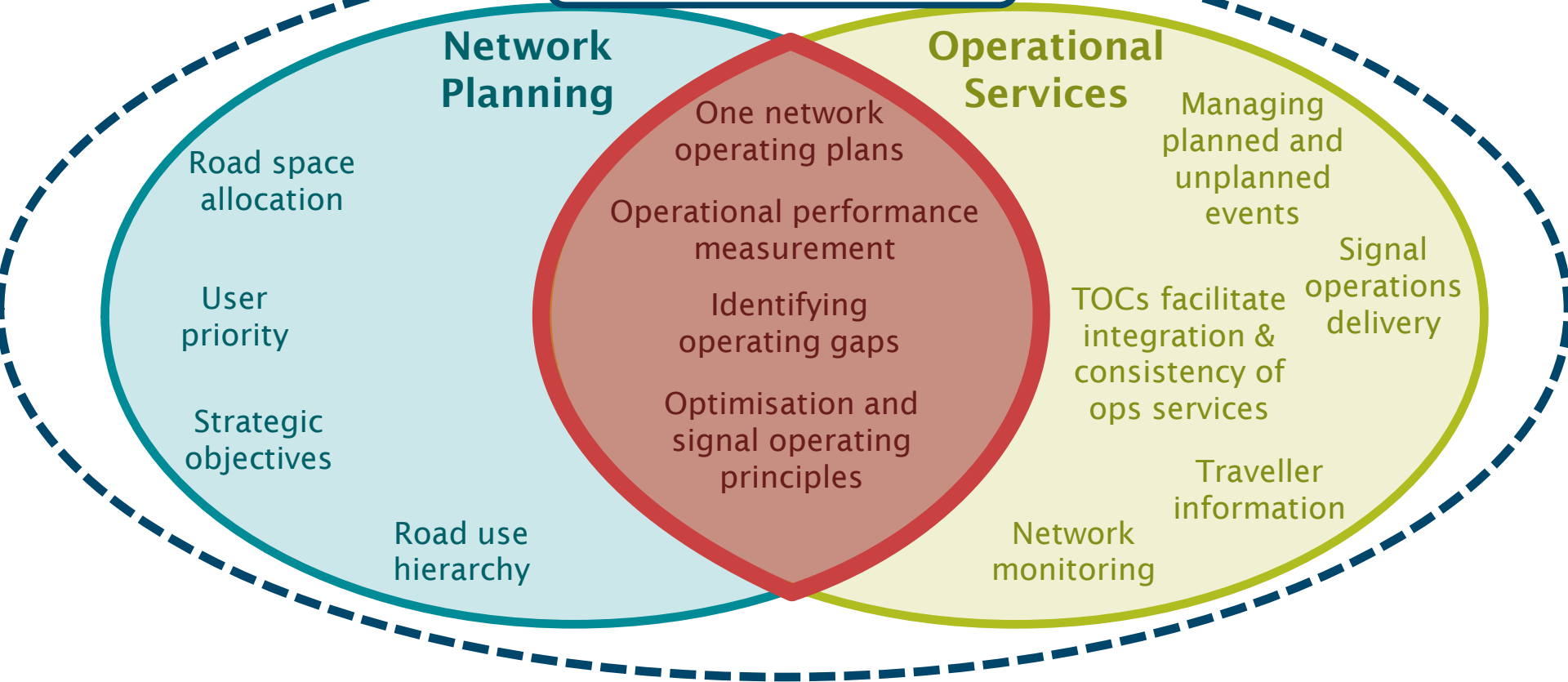
Network monitoring

Traveller information



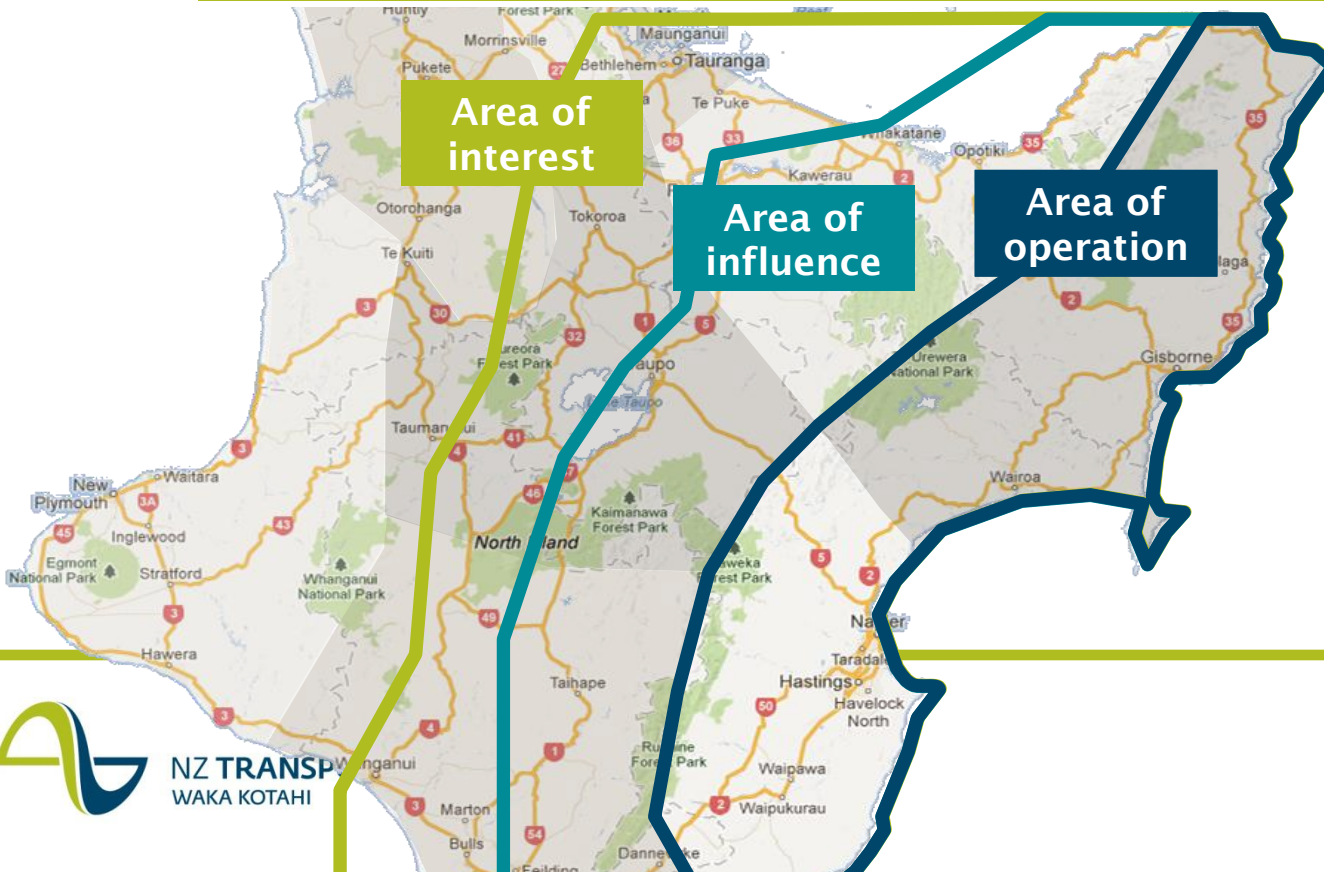
Network Operations

Network Operations



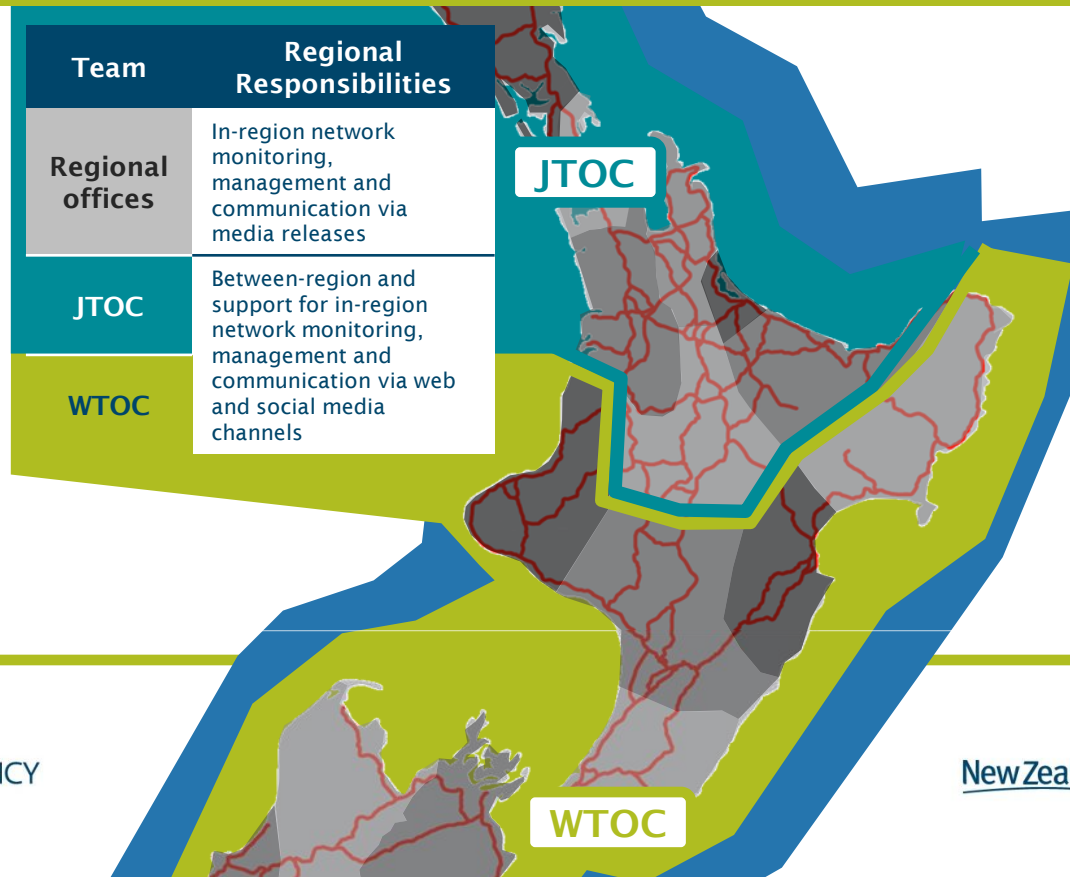
Regional Operational Services

Our customers constantly move between our regions and from state highways to the roads managed by each of the 77 local authorities. So each of our regions doesn't think about 'their' network, they naturally think about how to link up outside their area of operation.

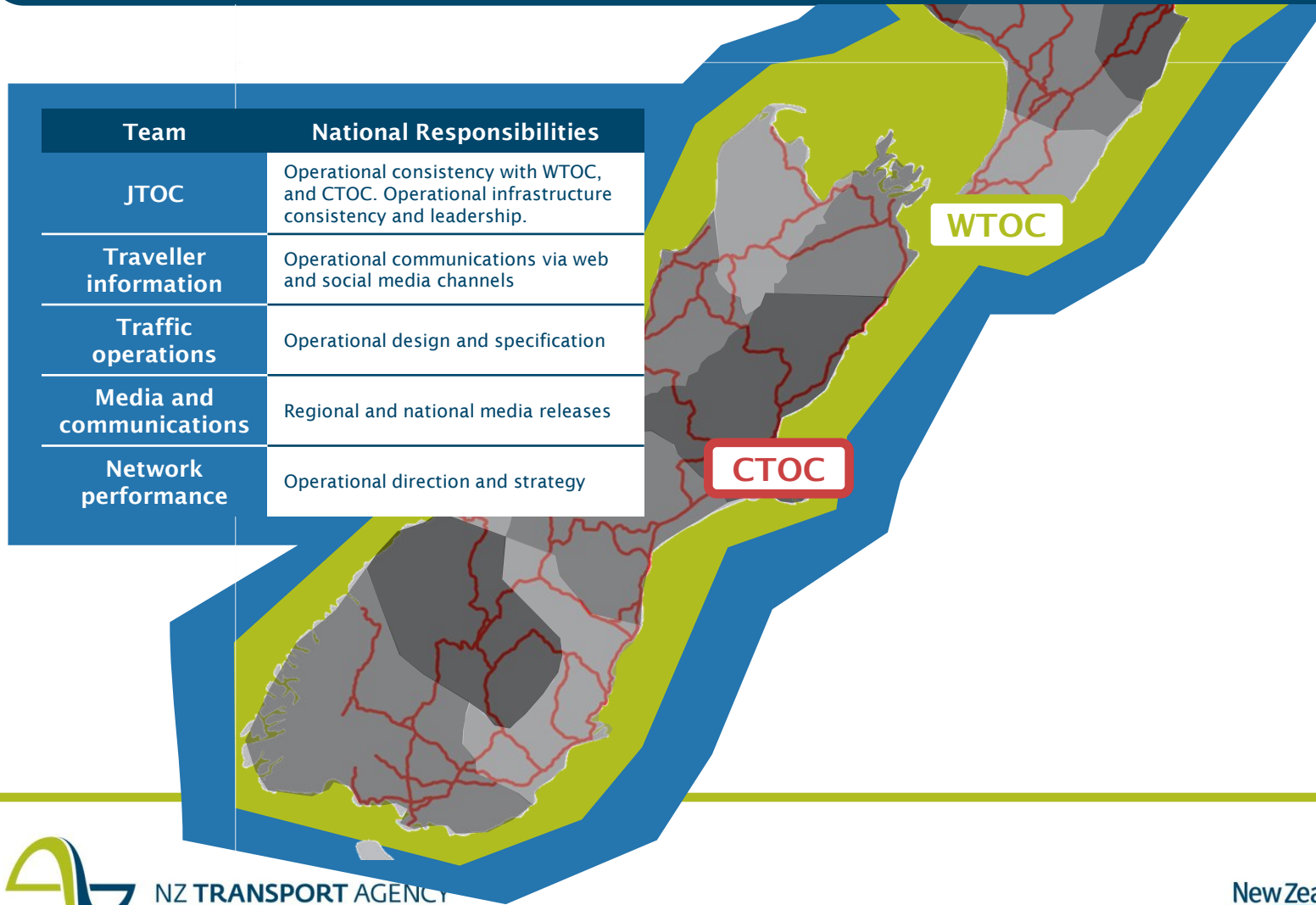


National Operational Services

The NZTA manages 11,000 kilometres of state highway throughout New Zealand, carrying half of all the country's traffic. It is our business to think about how operational services can help connect people between communities, towns and regions right across the nation.



National Operational Services



The journey



Every territorial local authority and NZTA region needs to talk to their neighbours and identify which services customers could benefit from a more joined up approach.

The next step is to look at ways to improve the services by working on the relationship between organisations.

As the relationship strengthens, look at adopting interoperable processes and systems which can save both time and money for customers, TLAs and NZTA.

While the benefits of integrated systems start to grow, create a shared vision for the services and start jointly managing them.

The final step is to house services under one roof and jointly manage them. Once this occurs, teams will fully realise the benefits of one network operational services.

Where next

- NZTA state highway managers will soon start conversations with TLAs
- They will need your support, as well as:
 - Regional M&O teams;
 - Regional planning teams;
 - TOCs
 - NZTA Network Performance and P&I where appropriate

