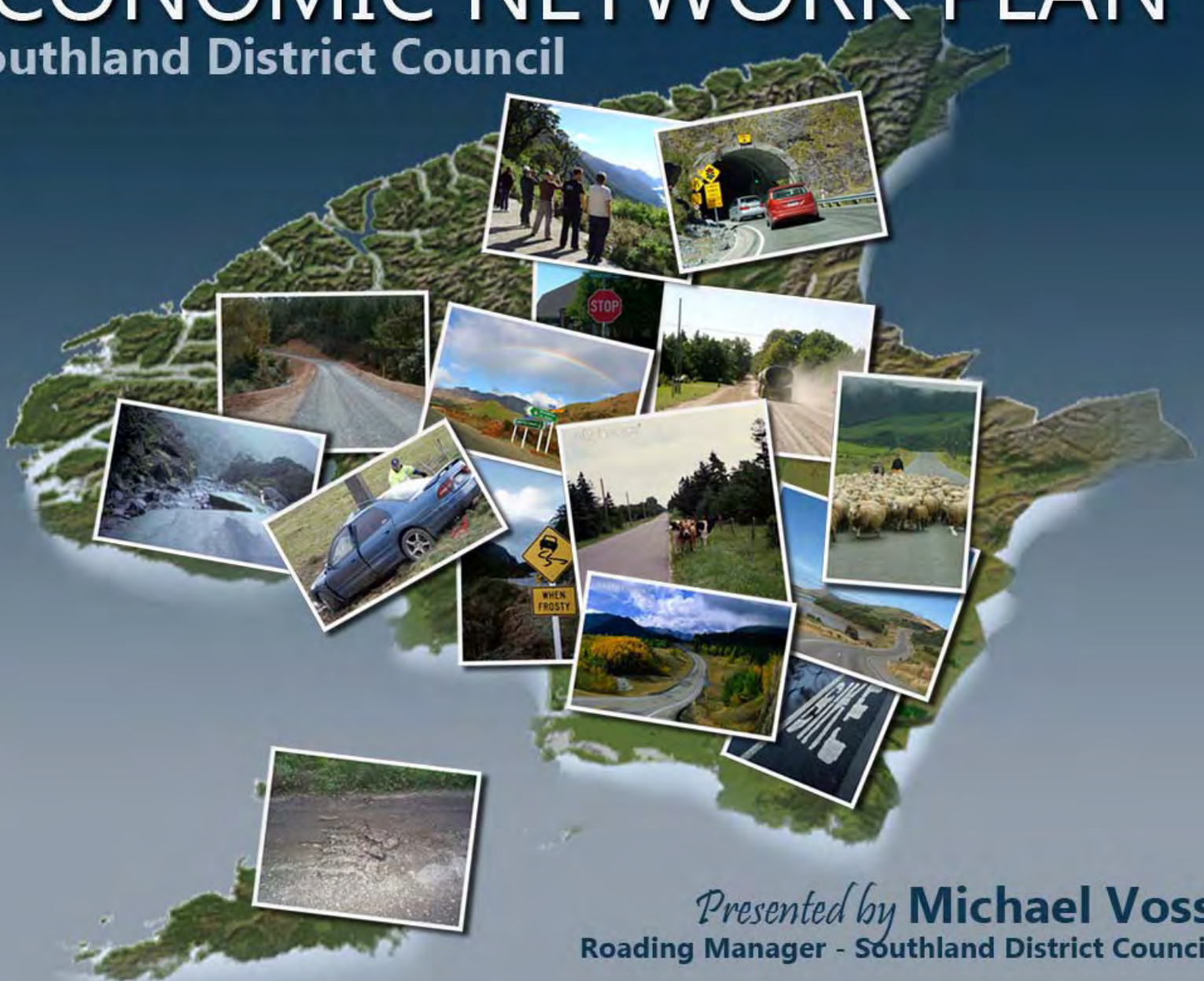


ECONOMIC NETWORK PLAN

Southland District Council



Presented by **Michael Voss**
Roading Manager - Southland District Council

INTRODUCTION

THE ECONOMIC NETWORK PLAN *- an alternative view towards assigning priorities in a time of austerity*



BACKGROUND

SOUTHLAND DISTRICT – a district in change

- **Timely Rewriting of AMP and District Plan**
- **Affordability Issues**
- **Land Use Changes**
- **Certainty of financial assistance funding**



MAIN DRIVERS

The key issue facing Southland is the conversion of pasture land to dairying

- Land use change
- Roading contributions and equity
- Energy (domestic and international)
- Flexibility of response



WHAT NOW?

Each of these drivers has a significant effect on the existing roading network

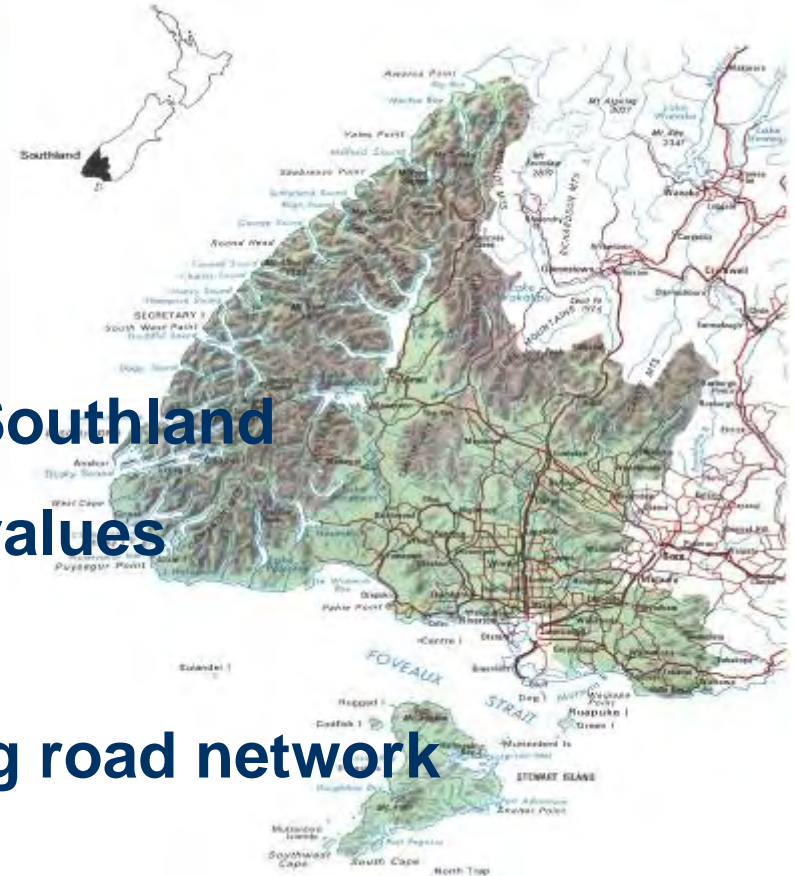
- Assess the effects of these drivers
- Assess the network against the existing criteria in the AMP
- What fits – what doesn't fit
- Time to reconfigure?



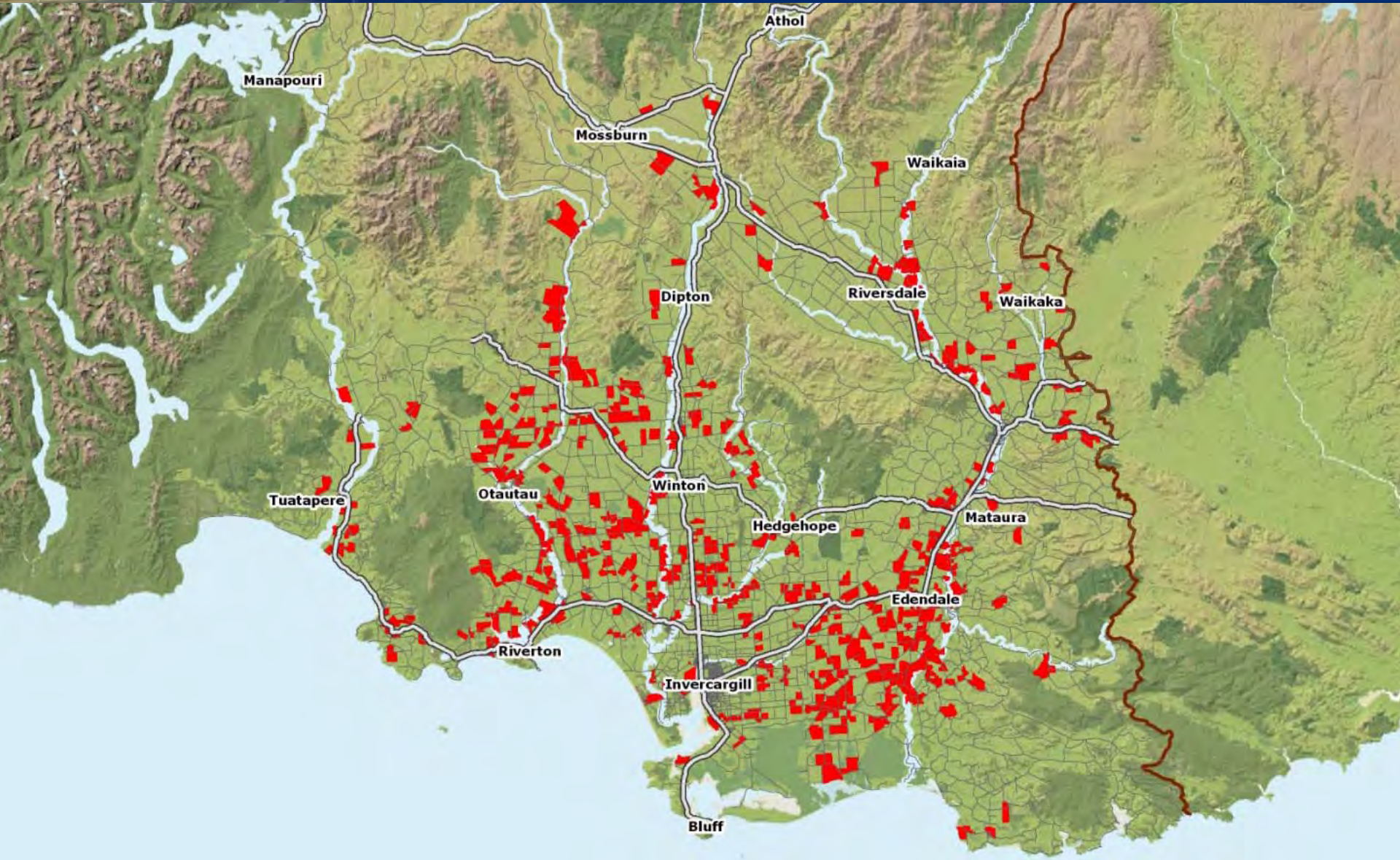
The Gestation

The Economic Network Plan

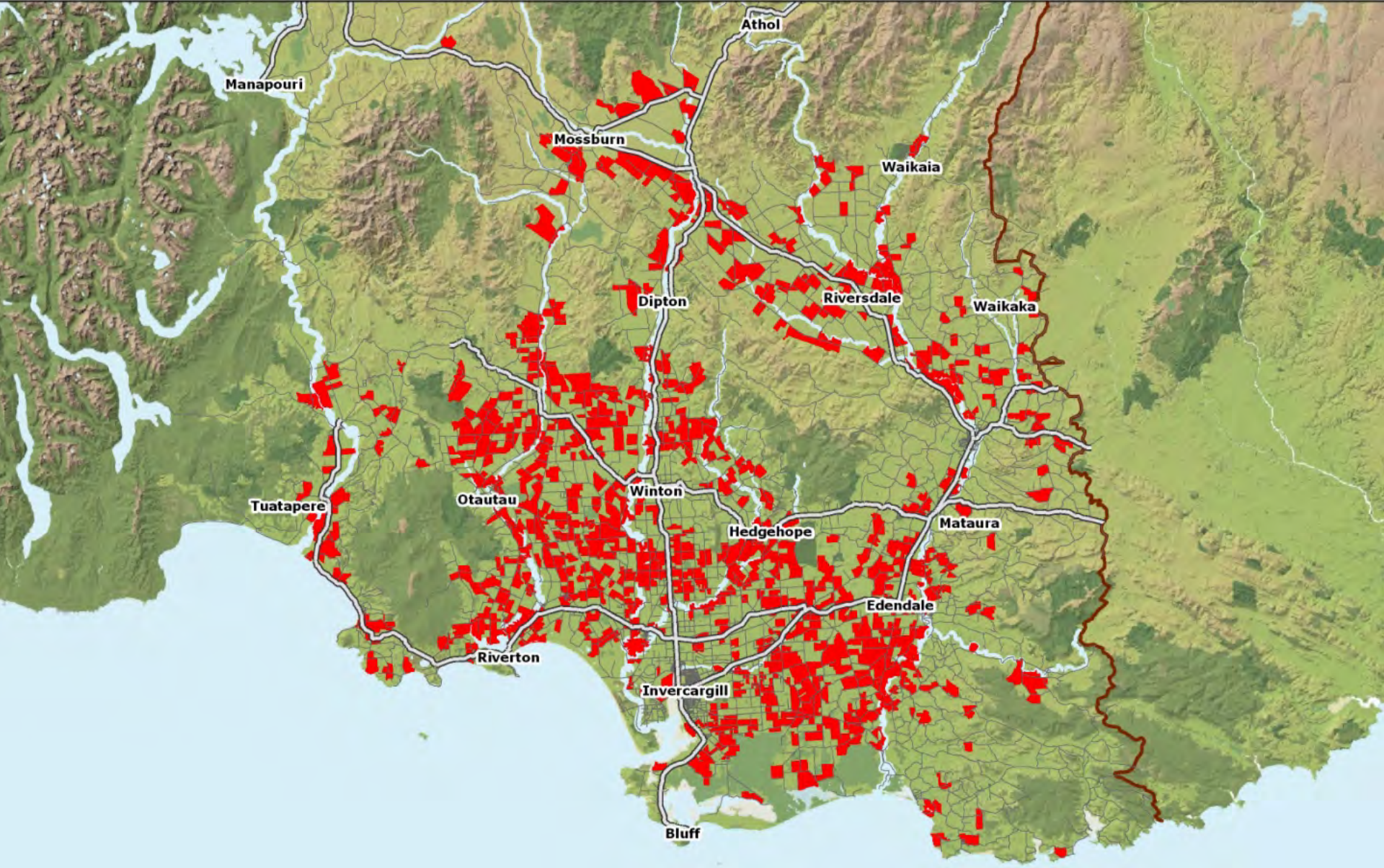
- Take a non-roading look at Southland
- Ascertain land wealth from values
- Heat map growth areas
- Overlay heat map on existing road network



DAIRY FARMS 2000



DAIRY FARMS 2010



- **Sample mesh block to check connectivity**
- **Single activity to simplify proposed model**
- **Match use against network descriptors**
- **Develop a draft hierarchy based on economics**



WORK IN PROGRESS

- Quo vadis?
- Status

