

AT Skid Resistance Strategy

RCA Forum 8 May 2015

Presented by Gerri Waterkamp



NZ TRANSPORT AGENCY
WAKA KOTAHI



An Auckland Council Organisation

First Principles- Looking after what we have

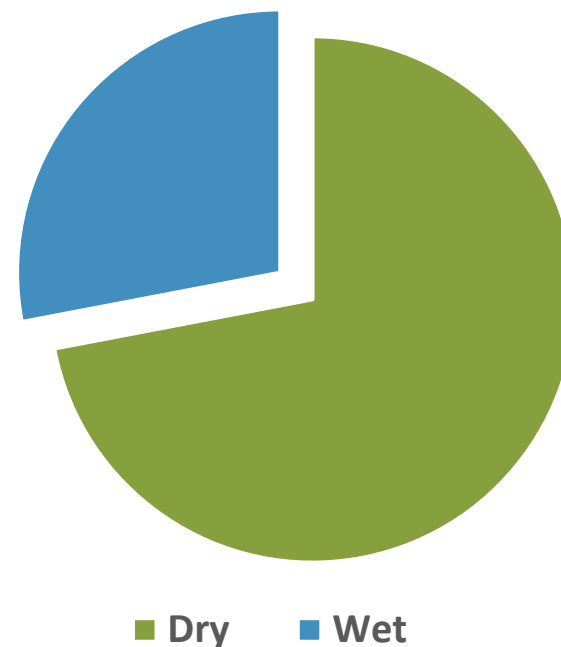
- Sealed Network Length – 6,516 kms -Value \$14b
- Spend \$5m daily
- No proactive skid resistance survey
- Anecdotal evidence that AT has a skidding accident problem



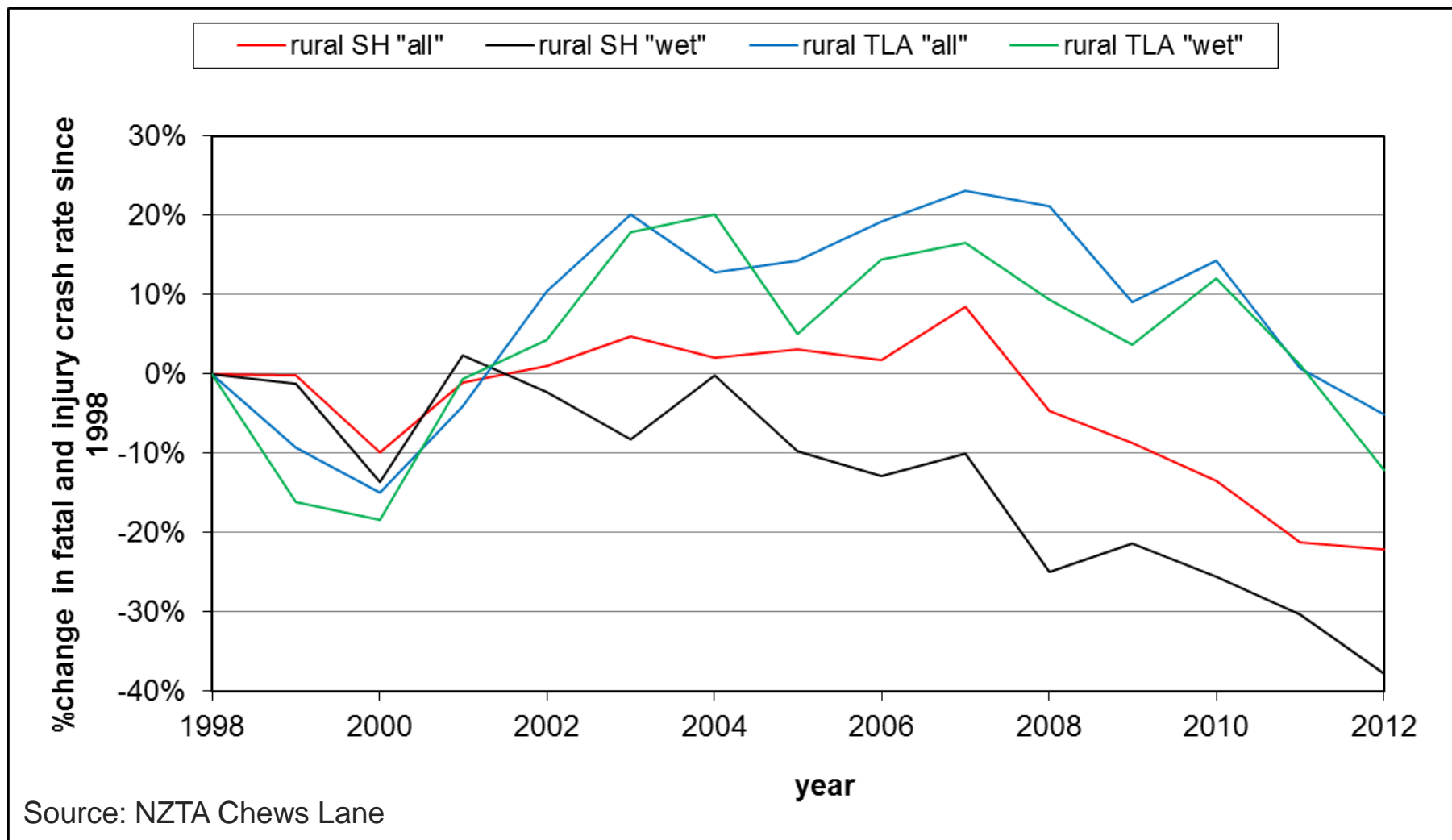
Why?

- Nationally 28% of crashes are from loss of control on bends (wet)
- Auckland region has a similar trend at 28%
- There is a very high cost to fatal and serious injury crashes – \$4.2M Fatal; \$800k Serious (2013)
- Appropriate skid resistance reduces crash rates

% Loss of control crashes



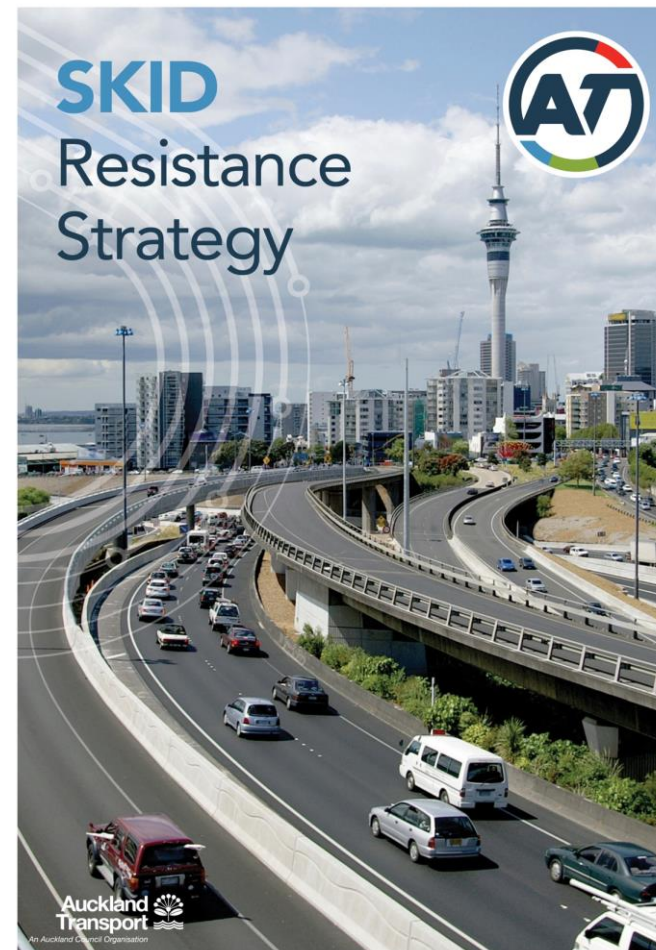
T10 Spec impact- % Change in wet crashes



AT Skid Resistance Strategy

- A strategy not a policy
- SCRIM survey of most of the network
- **Grip Tester** - Local Roads/Difficult Sites
- Prioritisation process for treatment site selection – applicable to different funding levels

Road Classification	Approx. Length	Network Coverage
Regional & Arterial	1,302 km	100% Annually
Collector	3,091 km	50% Annually
Access & Low Volume	2,123km	Site Specific



Interventions

SCRIM RESULT
BELOW I.L

REVIEW POTENTIAL
FACTORS

TREATMENT
SELECTION

Look at all the factors:

- Speed Environment
- Crash History
- Traffic Volume
- Road Geometry
- Pavement Defects

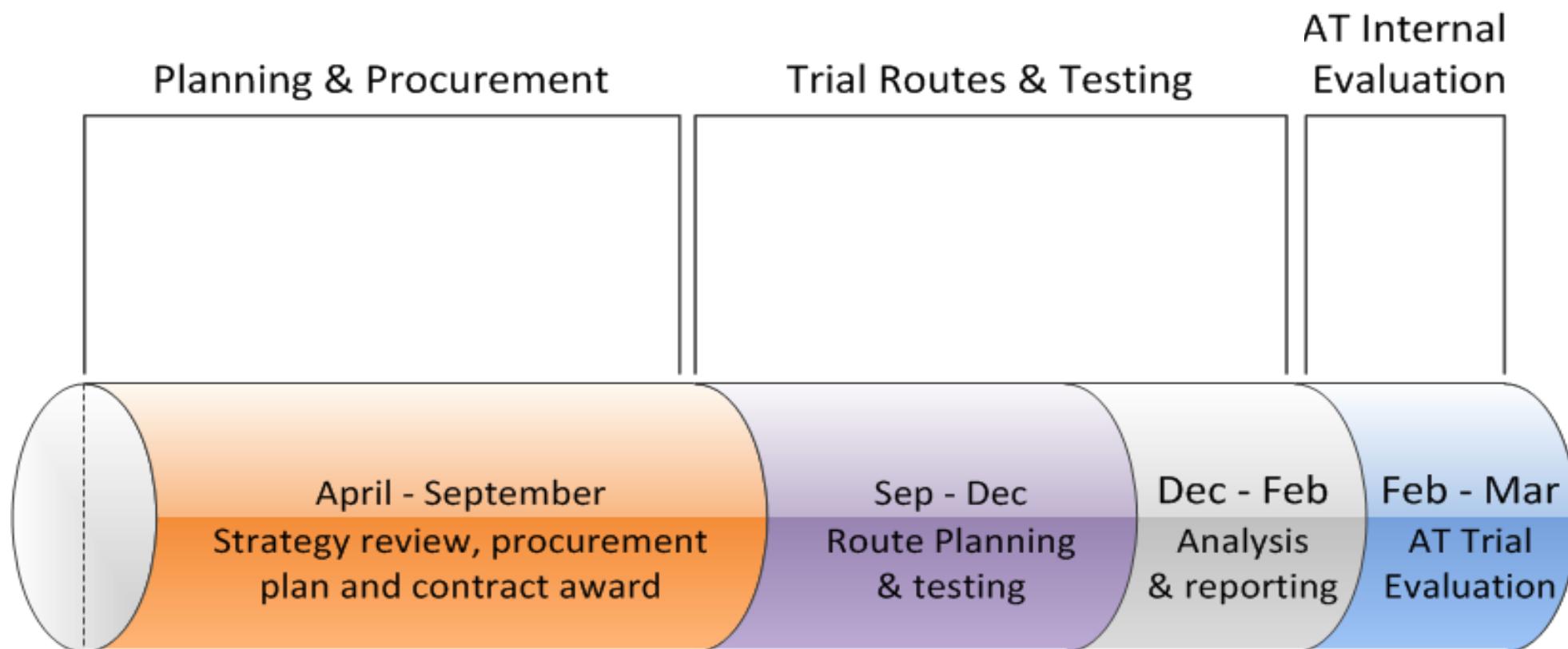
Only then prioritise and
programme remedial work

Where we are now

- AT Skid Resistance trial under development - 2,000 lane kms
- Sample survey 2015/2016
- RAMM records review
- Finalising the prioritisation process



Timeline for the AT Trial



After the 15/16 Trial Survey we will

Assess the SCRIM results asking...

- Are the investigatory levels (I.L.) are correct for an Urban environment?
- Are our Rural I.L. correct?
- How much of the network is below the I.L.?

We will also..

Analyse the results and potential interventions for..

- Evaluate how much will it cost to implement?
 - Survey Costs
 - Treatment Cost
- Determine if we are able to implement the strategy in the current environment?

The NZ Transport Agency are keen to assist any local authority that are considering development of a skid policy / strategy.

Contact: John Donbavand

Copies of the AT Skid Resistance Strategy are available please contact
gerri.waterkamp@aucklandtransport.govt.nz

Thank You

