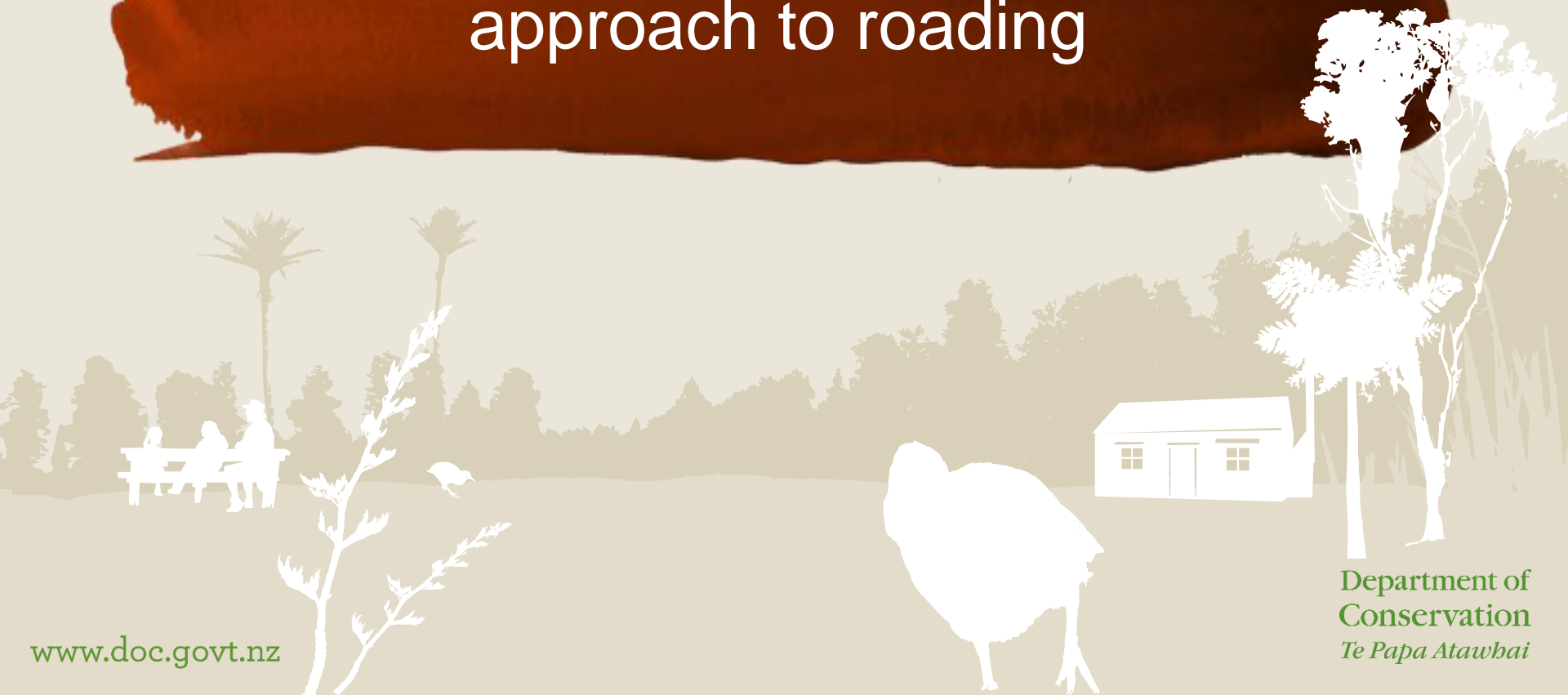




DOC roading - Taking a collaborative approach to roading



The conservation challenge

- **8.7** m ha of public conservation land
– 30% of NZ's land area
- **13** National Parks
- **44** marine reserves
and **6** marine mammal sanctuaries
- **2,800** threatened species
- **326** campsites, **967** huts
and **13,429** km of tracks



Department of
Conservation
Te Papa Atawhai

The conservation challenge

- **8.7** m ha of public conservation land
– 30% of NZ's land area
- **13** National Parks
- **44** marine reserves
and **6** marine mammal sanctuaries
- **2,800** threatened species
- **326** campsites, **967** huts
and **13,429** km of tracks

- **1800** km of roading



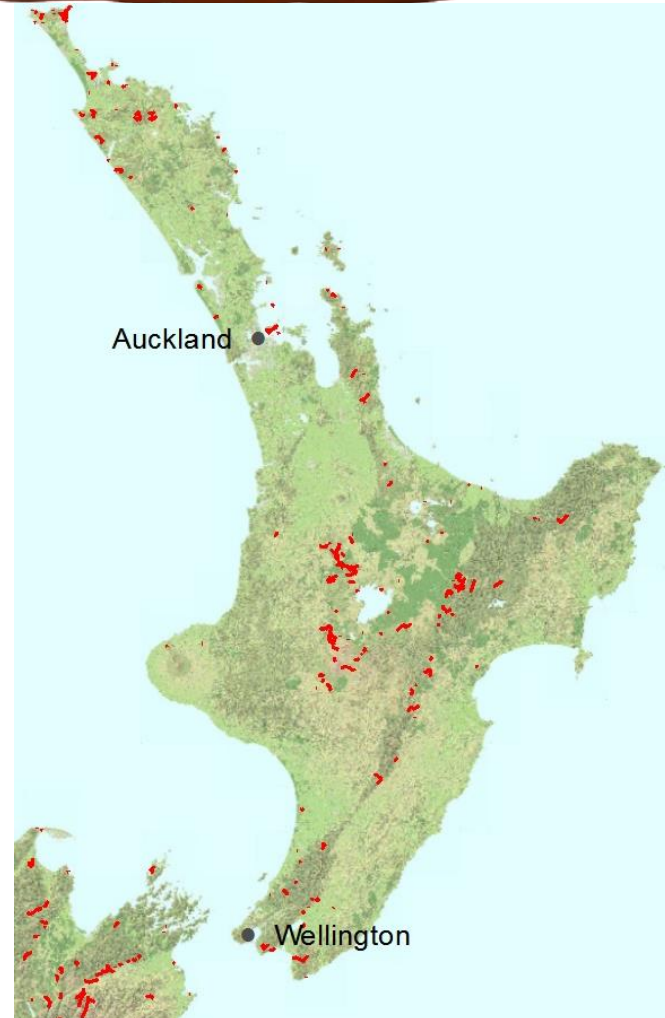
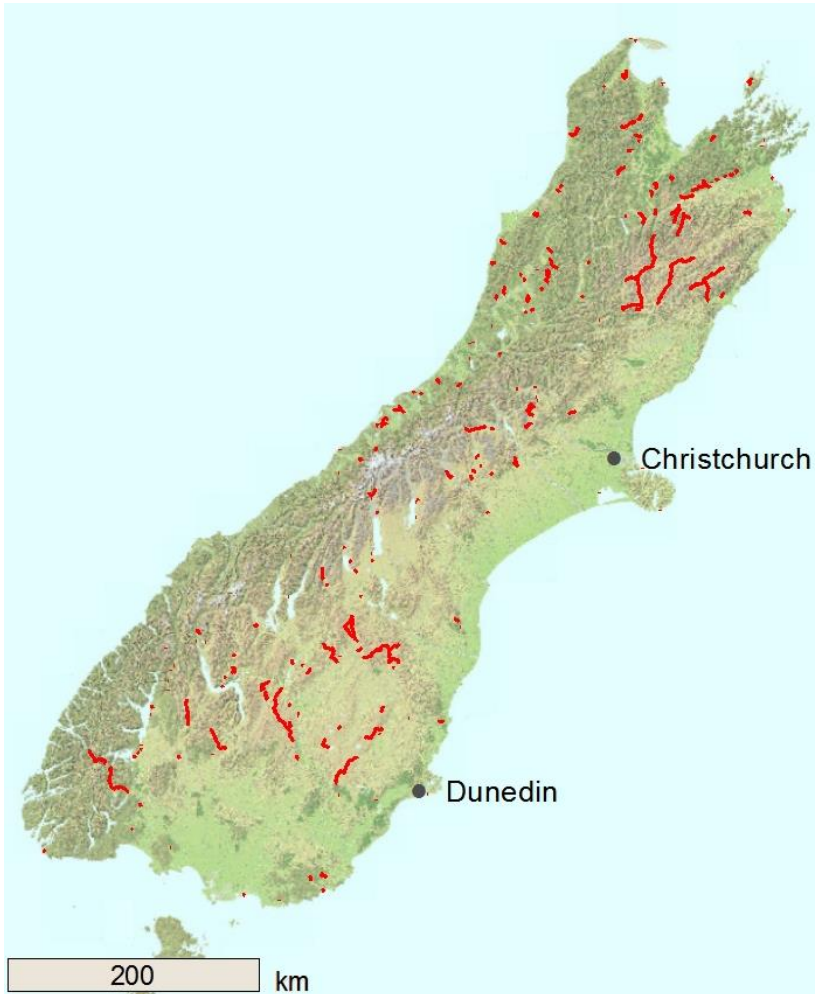
Our 2025 Stretch Goals

Working with others through whanaungatanga to inspire and deliver world leading conservation:

1. 90% of New Zealanders' lives are enriched through connection to our nature.
2. Whānau, hapū and iwi are able to practice their responsibilities as kaitiaki of natural and cultural resources on public conservation lands and waters
3. 50% of New Zealand's natural ecosystems are benefiting from pest management.
4. 50 freshwater ecosystems are restored from 'mountains to the sea'.
5. A nationwide network of marine protected areas is in place, representing New Zealand's marine ecosystems.
6. The stories of 50 historic Icon Sites are told and protected.
7. 50% of international holiday visitors come to New Zealand to connect with our natural places.



DOC's roads



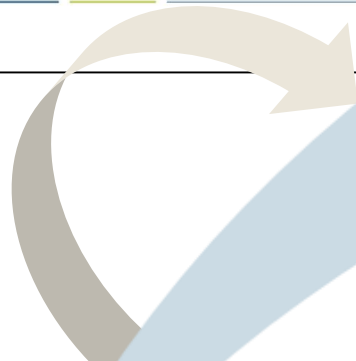
Department of Conservation Roding Activity Management Plan



Department of Conservation
Te Papa Atawhai



28 November 2017



Deteriorating experience

Holding the line

Meeting today's needs

Providing for tomorrow



Department of
Conservation
Roading Activity
Management Plan



Department of
Conservation
Te Papa Atawhai



28 November 2017

- DOC's roads eligible for NZTA \$\$ increasing from 30 kms to 1,062 kms.
- Investment in DOC roads quadrupling.
- Doubling of Transport Agency funding for DOC's roads.



Engage RCAs to undertake DOC roading maintenance



Engage RCAs to undertake DOC roading maintenance

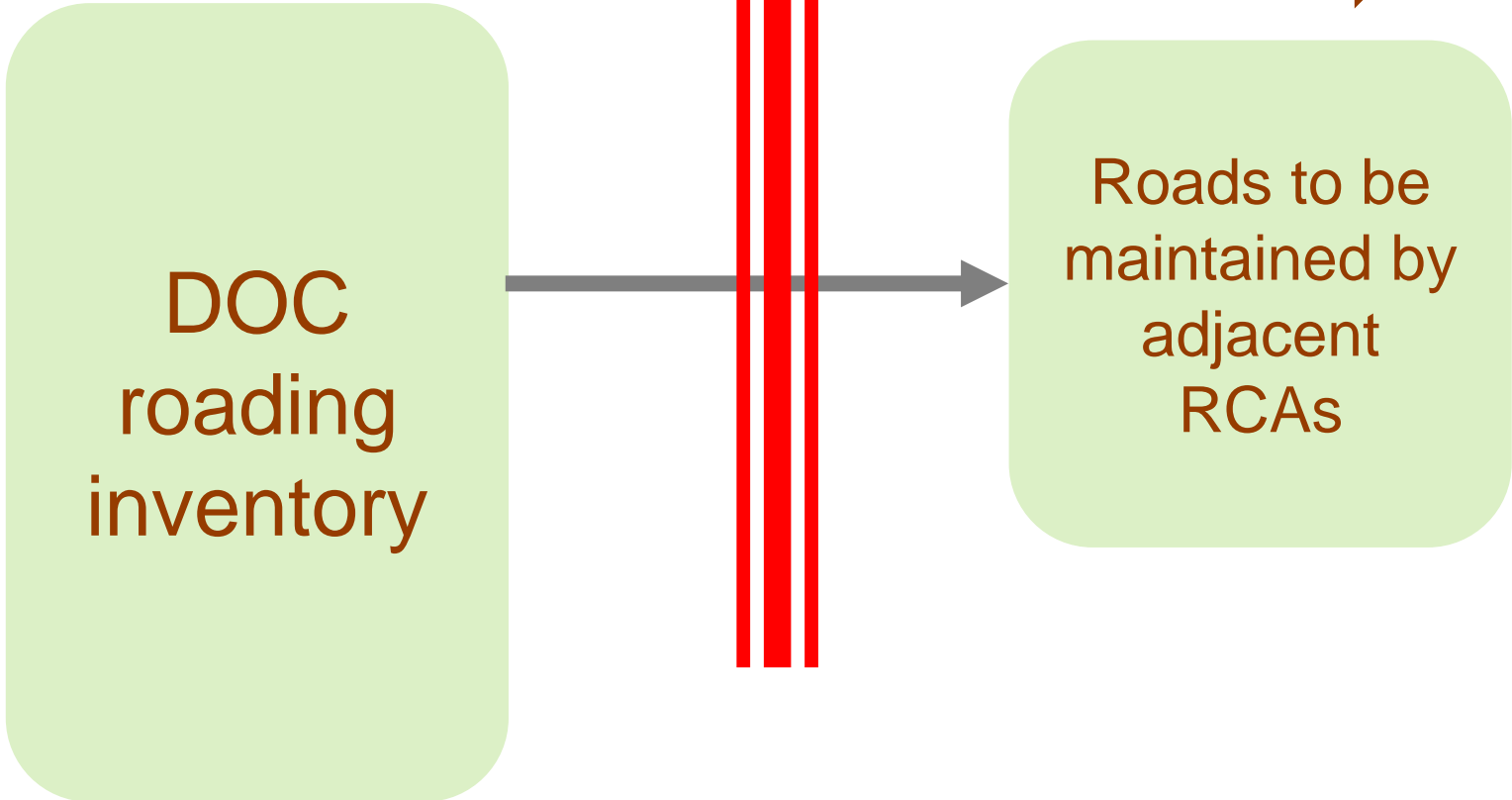
DOC roading inventory



Roads to be maintained by adjacent RCAs

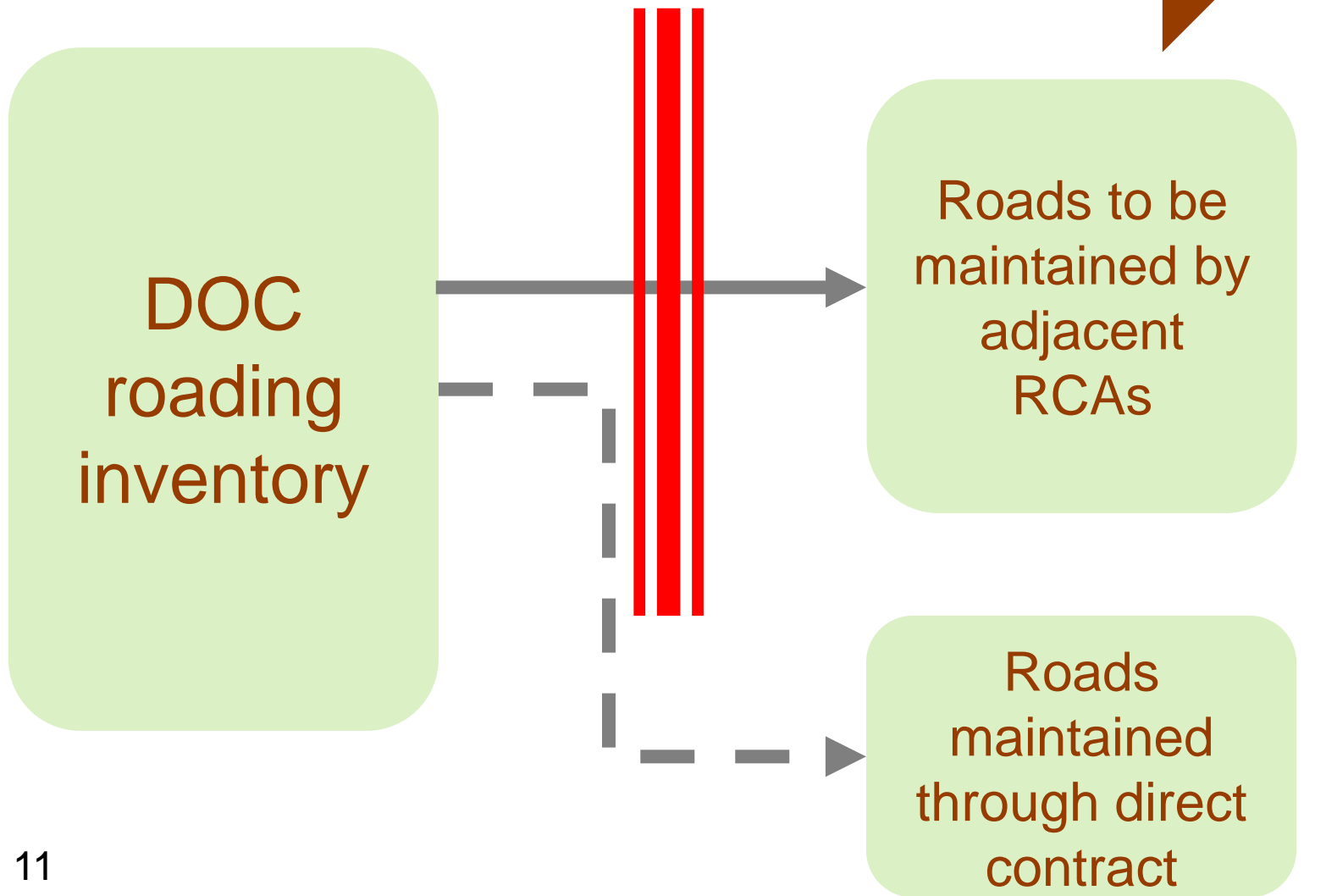


Engage RCAs to undertake DOC roading maintenance



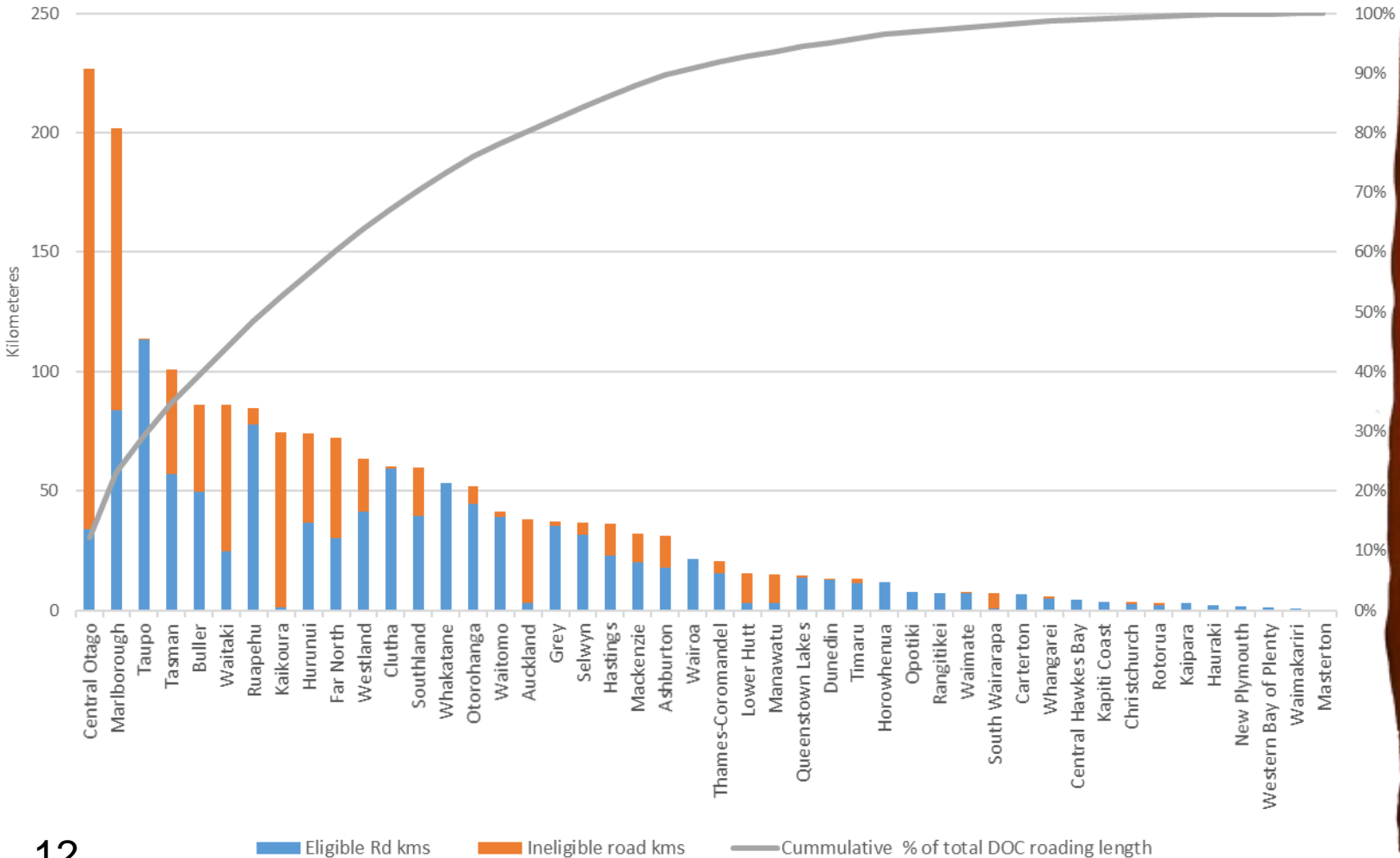


Engage RCAs to undertake DOC roading maintenance



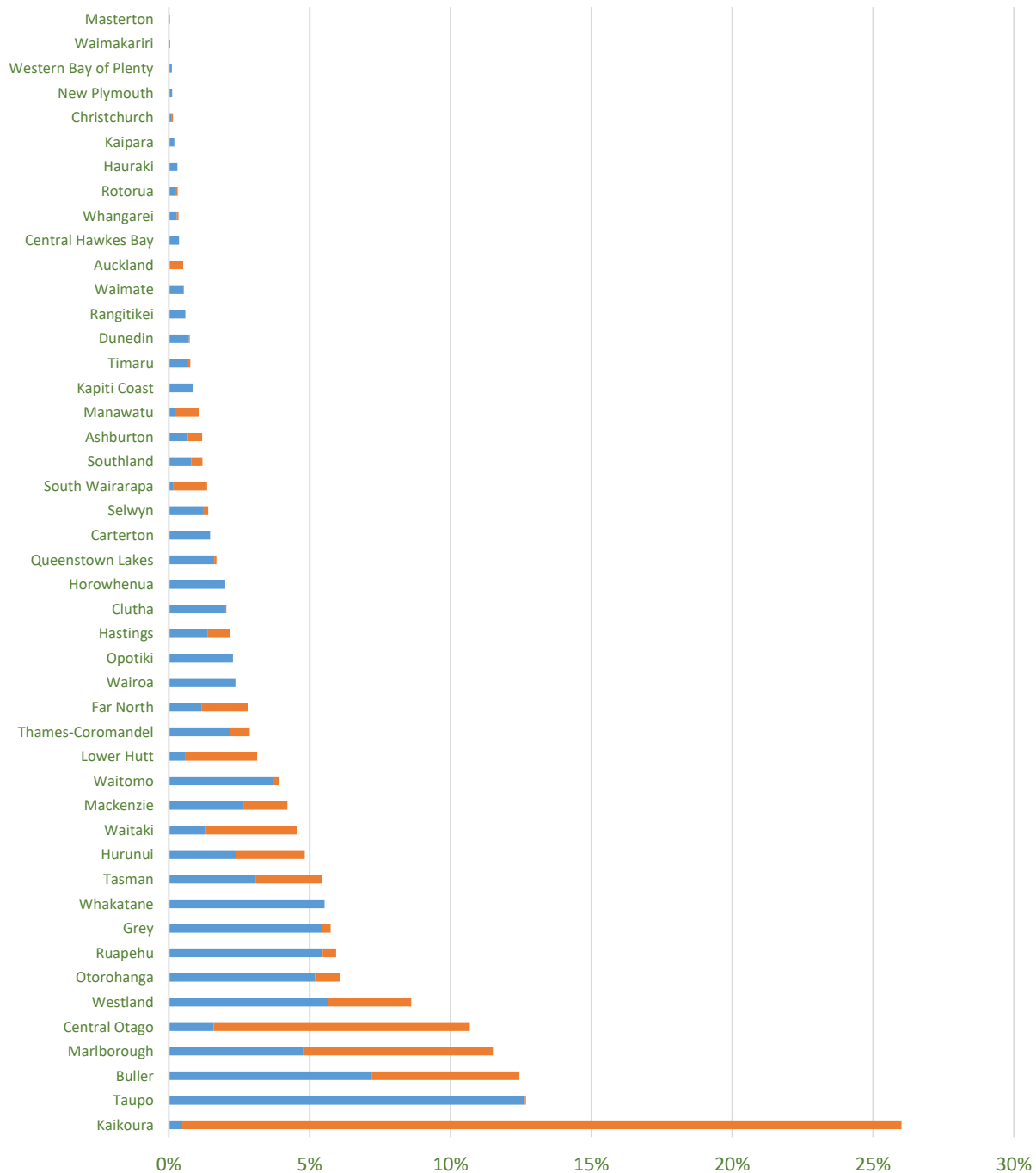


DOC Roads by Local Government District





DOC roads as a % of the local roads in the district

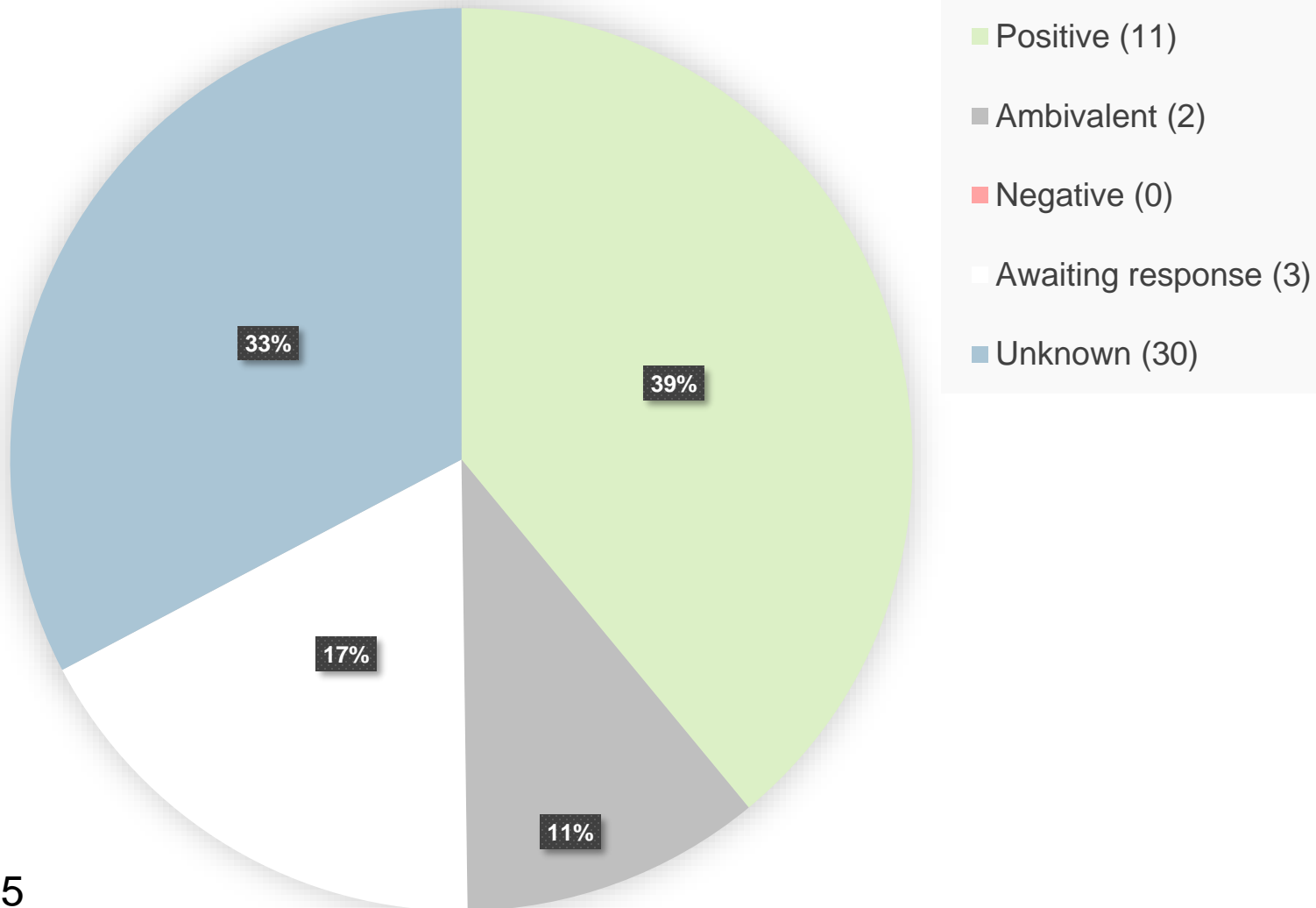


Collaboration principles

- Allowing the parties involved to arrive out an outcome that is mutually beneficial without any preconceived models
- Creating a seamless customer experience by working with the right people to obtain mutual goals for value for money
- Ensuring value ,for money benefits are agreed by all collaborative parties



Feedback by DOC Kms





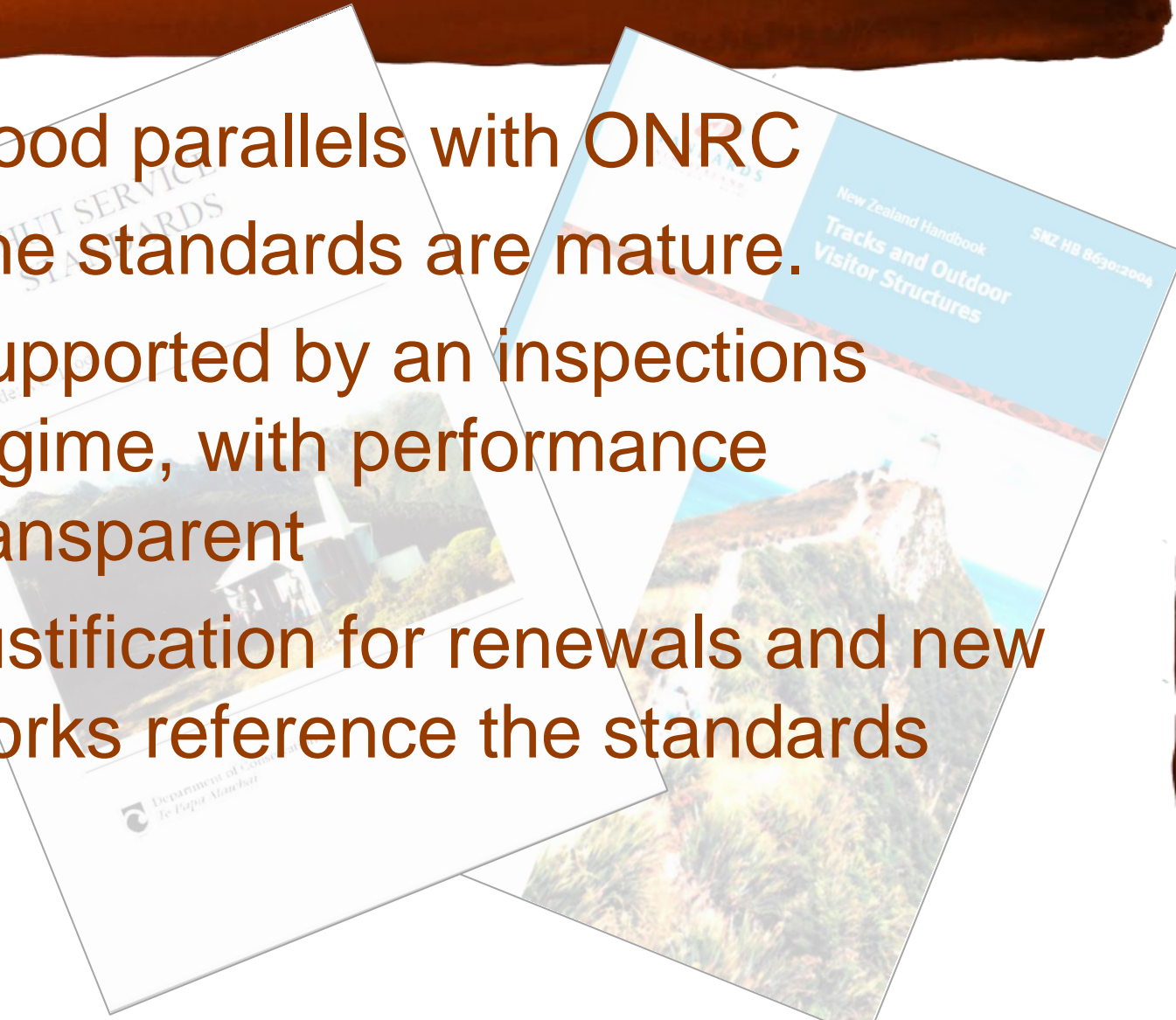
Tracks and Huts Standards





Tracks and Huts Standards

- Good parallels with ONRC
- The standards are mature.
- Supported by an inspections regime, with performance transparent
- Justification for renewals and new works reference the standards



Road standards

No formal standards

No clear view on performance

Inconsistent approaches to road maintenance

New investment hard to justify unless asset failure is clearly imminent (or has already occurred)





AMP
Customer
Outcomes

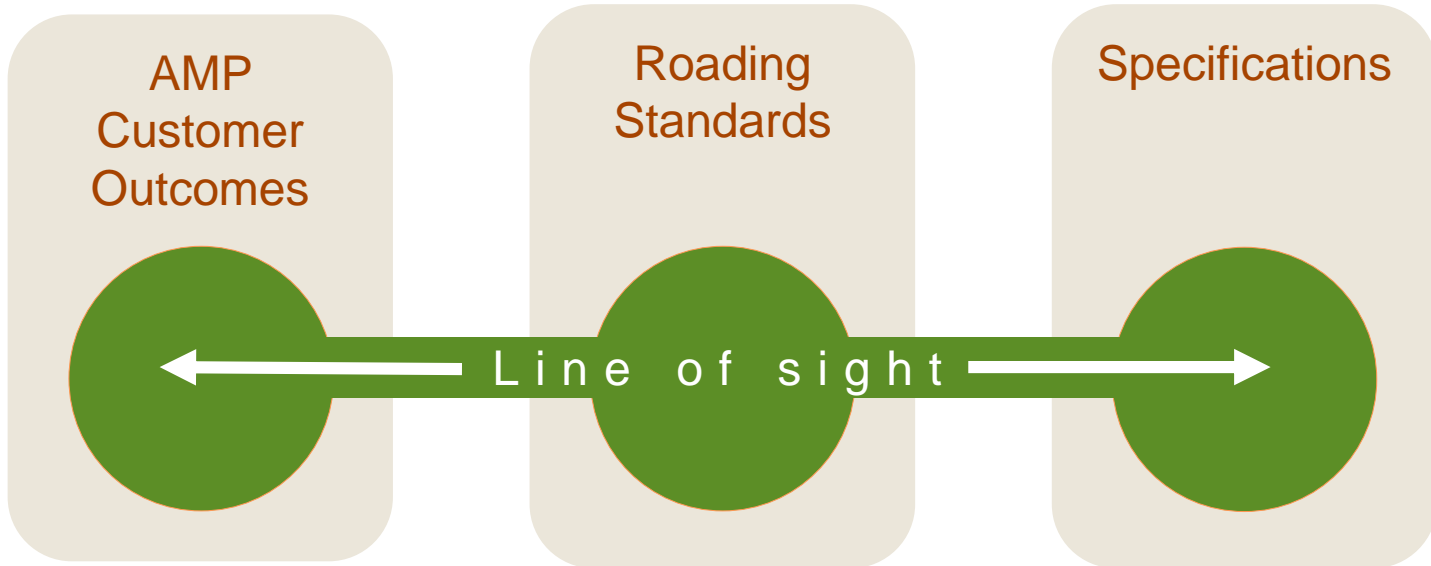


Specifications



ONRC
customer
outcomes

Model
Specs



ONRC
customer
outcomes

Our
customers'
standards

Specs
agreed
with
suppliers

Journey management



Next steps

- Procurement Strategy – August
- Templates (August – Sept)
- RCA engagement, from October



Thank you!



Denis Mander | *National Roding Advisor*

Department of Conservation *Te Papa Atawhai*

Conservation House | 18-32 Manners Street, Wellington

Ph 0272 476 545

Email dmander@doc.govt.nz | www.doc.govt.nz

Conservation leadership for our nature *Tākina te hī, tiakina te hā, o te ao tūroa*