

---

# NZ Transport Agency

– updates to AMIG 19 May 2016





# Cycling Network Guidance

## Progress to date

- Launch scheduled for 2 walk & cycle conference 6-8 July
- Website user testing 27 April – went well & got some good feedback, mostly confirming were on track
- Framework content mostly all uploaded
- Quality assurance check of all the messaging on the landing pages and technical content & linking
- AMIG volunteers to review framework ?
- Go live as ‘draft guidance’
  - Feedback will be welcomed at this framework will be proposed as a State Highway and local authority guideline for inclusion on the register of network standards and guidelines

# Cycling Network Guidance - planning & design

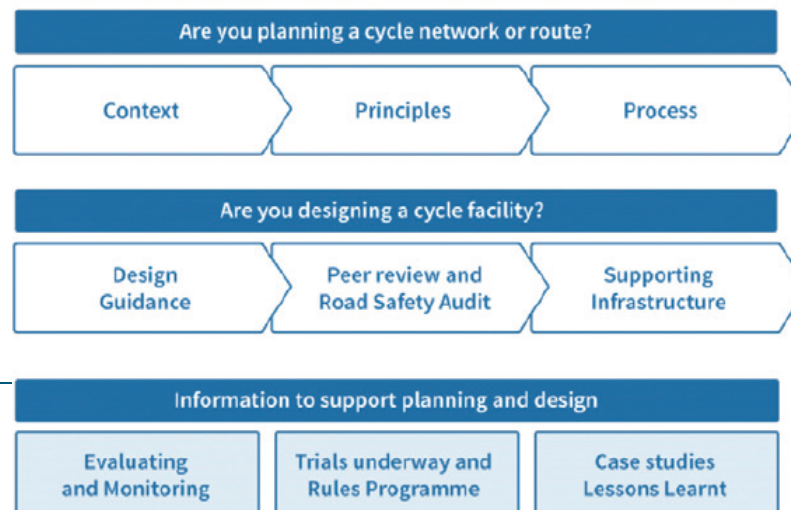


## Cycling Network Guidance – planning and design

What provision should be made for people cycling within our transport network, and where?

'Cycling Network Guidance – planning and design' (CNG) aims to promote a consistent, best-practice approach to cycling network and route planning throughout New Zealand. It sets out a principles based process for deciding what cycling provision is desirable, and provides best-practice guidance for the design of cycleways.

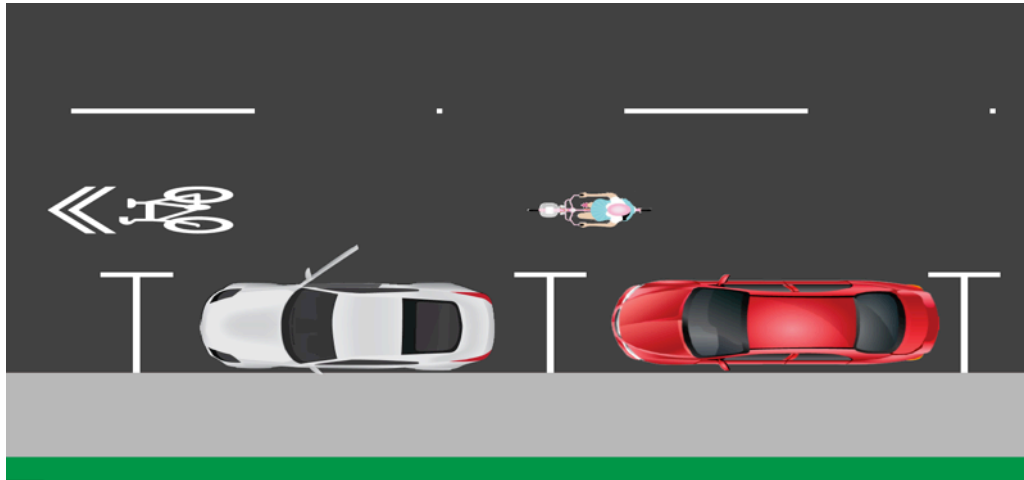
The figure below provides an overview of the CNG's content.



# Sharrow Markings

## Best Practice Guidance Note

- To be reviewed by next TCD Steering Group meeting
- Scheduled to become legal in early November 2016





# TCD Manual review

Tim / Glenn?

- TCD part 5 (mid block) with Opus for incorporation in to Draft TCD Manual
- TCD part 4 (Intersections) with Tim for final Review
- Other parts

# Safety & Network Functionality

## Emerging concepts being investigated

- Developed and being trialled by the CCC MCR Peloton & Velos Delivery Teams
- Considers not only safety but considers network functionality elements
- In applying only a 'safety' lens to a scheme assessment, other, just as important elements like, parking, commercial and residential property access and network impacts for all road users are often over looked.
- Takes a more holistic approach when reviewing and auditing schemes should help identify and address the wider functionality desires of a transport corridor.
- Draft guidelines have been developed
- Intent to trial over the next year to
  - Refine guidelines
  - What parts of the process to use
- Outcome – competing issues brought into a more balanced position



# Rural cycling safety improvements

- Final Report complete by Opus Consultants on 'Improving safety for people who cycle on rural roads'
- Going through the approval and sign out process
- Expect to be published very soon

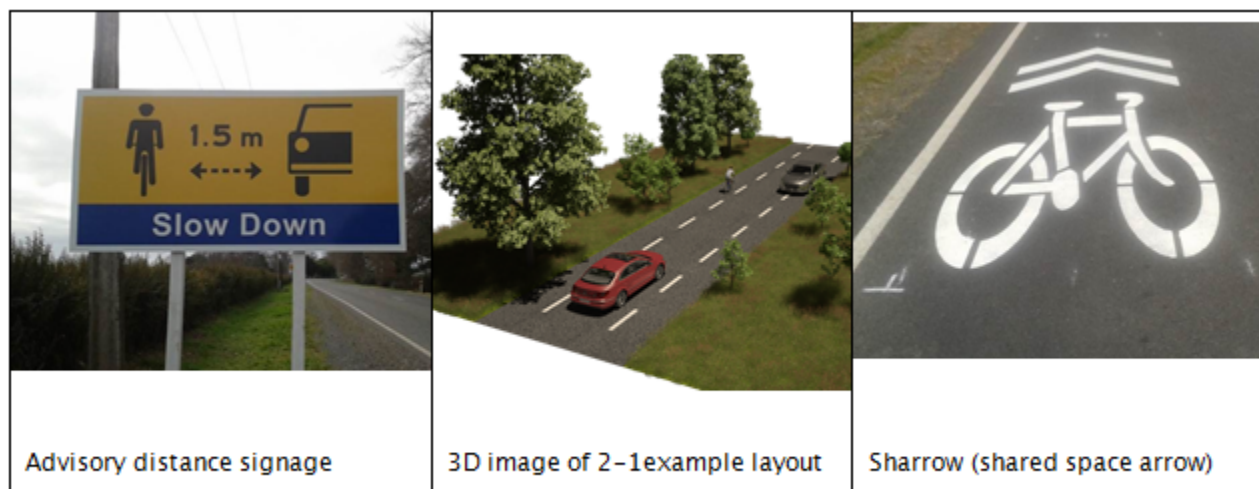


Figure 1-1. Trial treatments used

# Cycling Rules Change programme

## First Tranche

- Transport Agency/MoT review of draft is underway
- Due for public consultation from mid-June
- Ministerial decision due in September
- Rules due to take effect 1<sup>st</sup> November





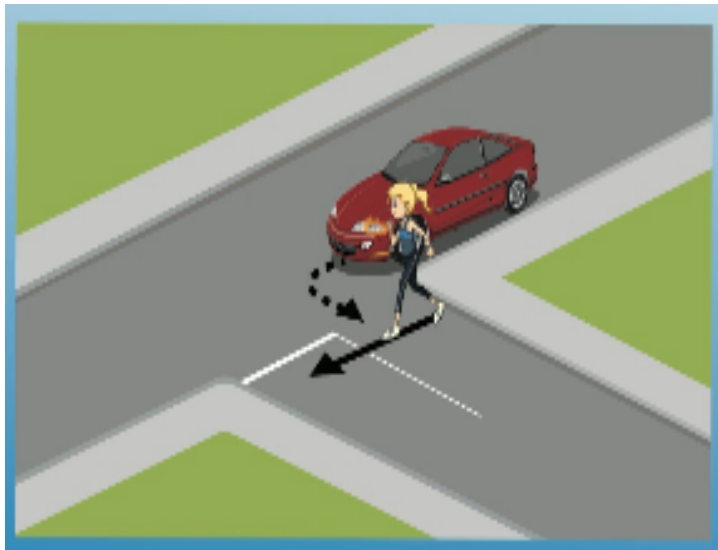


# Cycling Rules Change programme

## Second and Third Tranches

- MOG and Give-way rules research underway (due end of Sept 2016)
- E-Bike & other low-powered vehicles research funding approved
- Footpath cycling research likely later in 2016
- Some items moved to Trials package (e.g. Barnes Dance, Elephant Feet markings) and may result in TCD rules changes if successful

# Give-way Rules



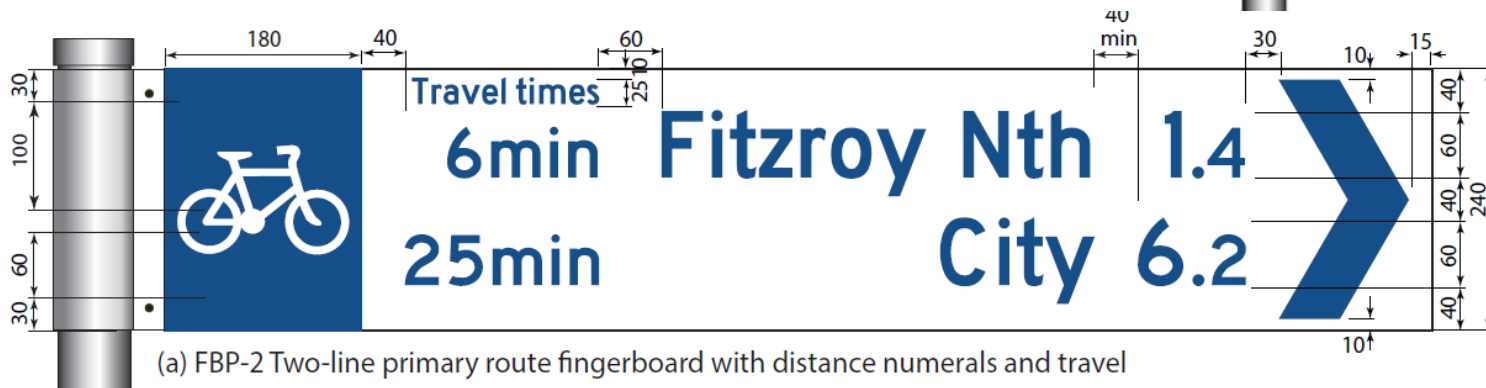
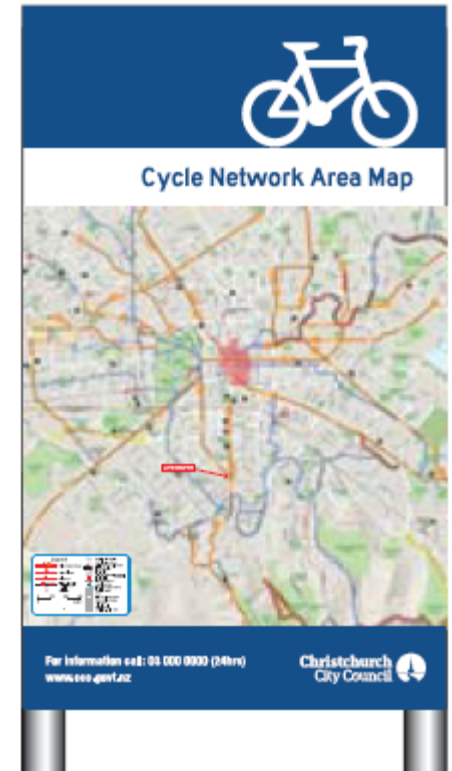
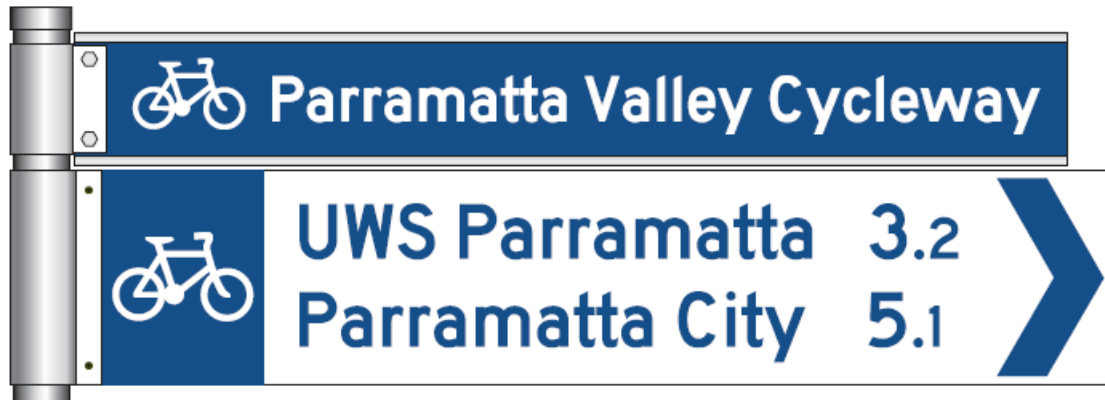


## Give-way Rules under consideration

- giving pedestrians right-of-way over turning traffic when crossing side roads
- giving cyclists right-of-way over turning traffic where separated cycling facilities cross side roads.
- allowing cyclists to use a left turning lane while riding straight ahead
- allowing cyclists to undertake slow moving traffic
- allowing cyclists to lane split when filtering to the front of a queue of traffic
- allowing cyclists to turn left and/or ride across the top of a T despite being faced with a red light

# Bicycle Wayfinding Signs

AustrroadsNT1988 Wayfinding Research Report



(a) FBP-2 Two-line primary route fingerboard with distance numerals and travel

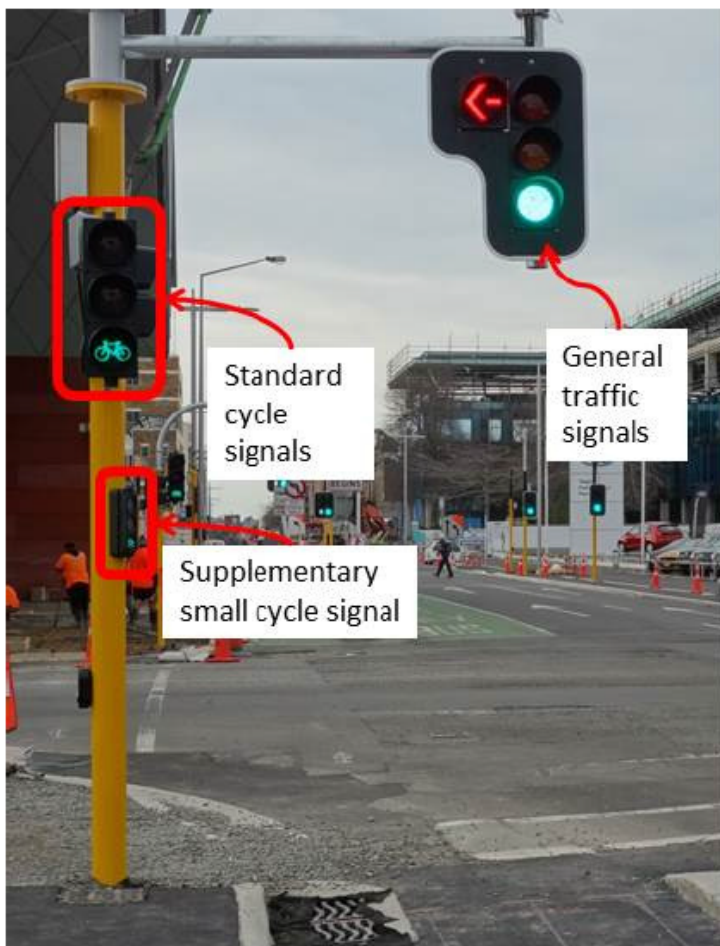
# Hook turn signage

Low level of  
comprehension





# Cycle signal trial



# 2016 work programme

