



IPWEA

INSTITUTE OF PUBLIC WORKS
ENGINEERING AUSTRALASIA

New Zealand

informs...
connects...
represents...
leads

Centre of Excellence for Asset Management

*“Saving the world through collaborative
excellence”*

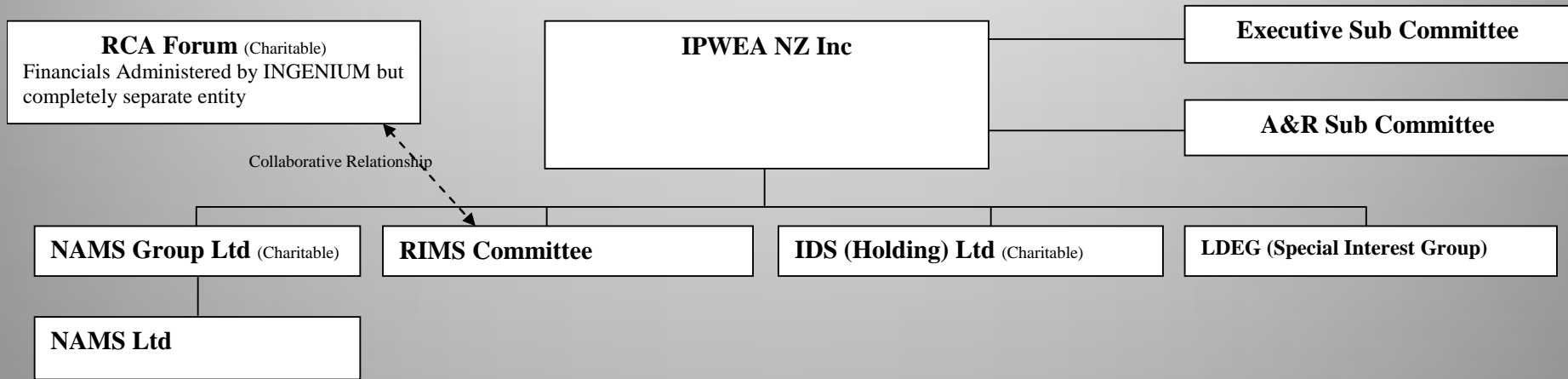
Presentation to RCA Forum
6 September 2013

Who/what is IPWEA NZ?



80% Local Government Engineers/Asset Managers
10% Consultants
10% Contractors

IPWEA NZ Structure





IPWEA

INSTITUTE OF PUBLIC WORKS
ENGINEERING AUSTRALASIA

New Zealand

informs...
connects...
represents...
leads

Vision Statement

Leaders in engineering and asset management for sustainable communities.

Mission Statement

We will champion integrated management of services for communities through excellence in engineering and asset management.

Centre of Excellence

- Why?
 - What?
 - How?
 - When?
- Public Infrastructure/Asset Management

Why? - context

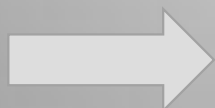
- Many issues focussed on delivery of infrastructure
- Supporting Economic Development
- Support Government's goals of efficiency
- Better Local Government Reforms
- Some of Us Think We Can Do Better

National Drivers of Change

- National Infrastructure Unit
- Productivity Commission
- Office of Auditor General
- Better Local Government Reforms

'Better Local Government' reforms

- Local Government Act amendments
- Review of development contributions
- Infrastructure Efficiency Expert Advisory Group



Centre of Excellence

Roading specific

- Road Maintenance
 - Funding “Flat-Lined”
 - Road Maintenance Task Force
 - NZTA M&O Review
 - Roothing Efficiency Group

What?

RAISING THE STANDARD OF PUBLIC INFRASTRUCTURE IN NEW ZEALAND



CENTRE OF EXCELLENCE FOR PUBLIC INFRASTRUCTURE

- 1 An integrated and collaborative approach ...based on input from a wide range of public works industry organisations and government bodies
- 2 Utilising existing tools and services provided by IPWEA NZ ...at minimal cost to Government
- 3 Mobilising international best practice ...already used by the top performing councils
- 4 Ensures no duplication of effort
- 5 Focused on optimisation...getting the most out of the money we spend
- 6 Providing the Infrastructure strand of a broader based New Zealand Centre of Excellence for Local Government once established

GOVERNING BOARD

- Central Government (IDA?)
- IPWEA NZ (Institute of Public Works Engineering Australasia)
- LGNZ (Local Government New Zealand)
- SOLGM (Society of Local Government Managers)

STRAND LEADER – INFRASTRUCTURE

IPWEA NZ

New Zealand's leading public infrastructure organisation for the past 20 years (formerly INGENIUM)

ROAD EFFICIENCY GROUP

- Roading sector best practice body already in place
- To sit within Centre of Excellence over time"

CENTRE FOR PUBLIC INFRASTRUCTURE

- Professional development training
- Best practice manuals
- Best practice research
- Infrastructure modelling tools

Input provided from:

- Central Government (National Infrastructure Unit)
- IPENZ (Institute of Professional Engineers NZ)
- Water NZ
- Roading NZ
- NZ Contractors Federation
- NZTA (New Zealand Transport Agency)
- Consultants
- NZ Lifelines Committee
- OAG (Office of Auditor General)

Providing a 'whole of asset' approach, including planning, building, maintenance and improvements

Improved skills in public works infrastructure

Ensuring access to industry best practice for all

Monitoring infrastructure performance over time

Ensuring an evidence based approach to recommendations



MAXIMISING CURRENT RESOURCES

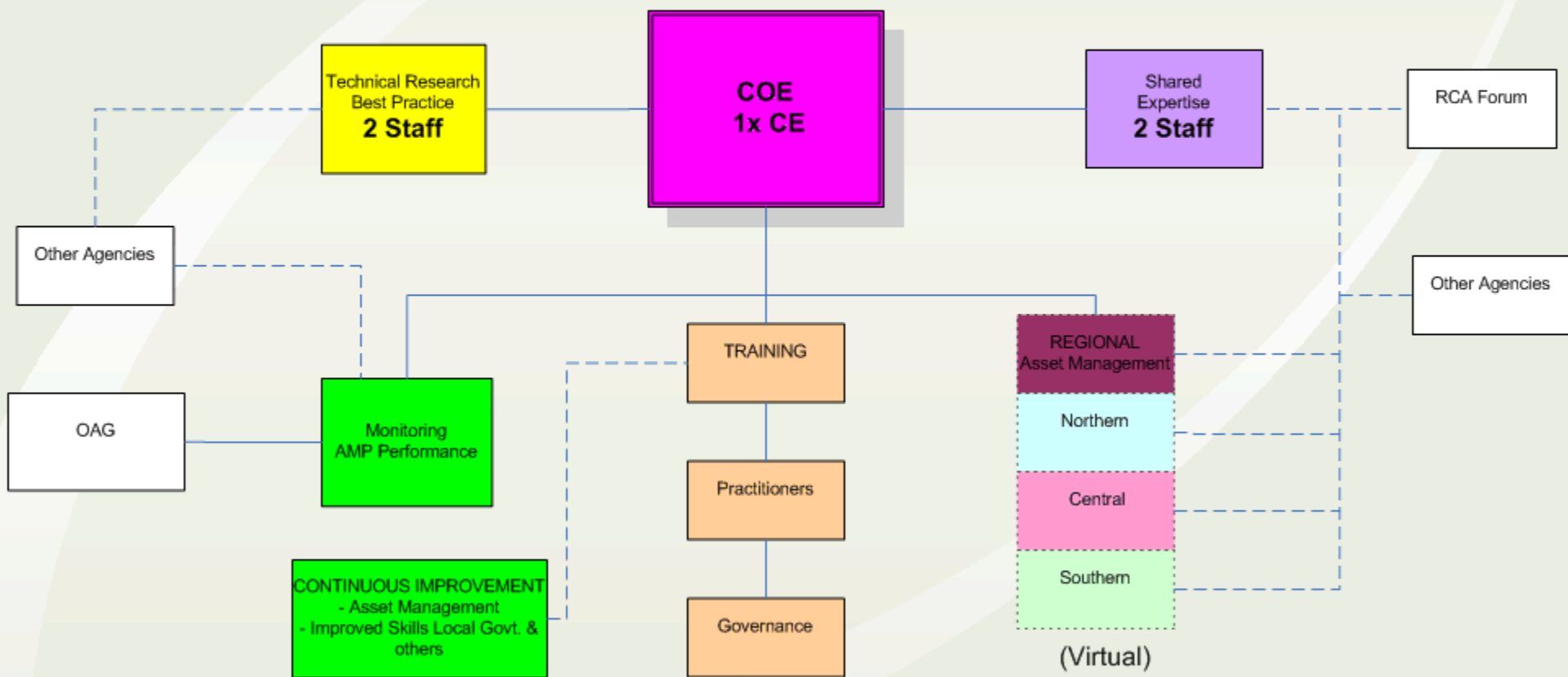
- ALL TECHNICAL RESEARCH AND BEST PRACTICE EXISTS AND WILL BE PROVIDED BY IPWEA NZ
- NO NEED FOR DUPLICATION
- TRAINING COURSES AND MANUAL DEVELOPMENT LARGELY SELF FUNDED
- REQUIRES VERY LOW SET-UP COSTS, FUNDED BY CONTRIBUTIONS FROM THE STAKEHOLDERS



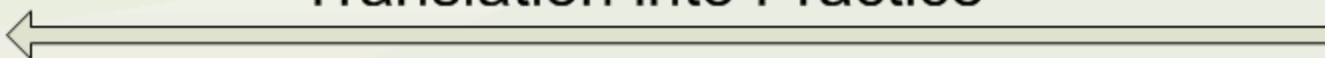
Centre of Excellence

- COE funded by Governance Group (Cash, IP, Personnel, Other Resources)
- Best Practice Guidance (manuals, etc) self-funded (as NAMS model)
- Training self-funded (as NAMS/ IPWEA model)

Public Works Infrastructure



Translation into Practice



Best Practice consistency

Centre of Excellence

- Strong alignment with Roading Efficiency Group (REG) – managed by NZTA
- Alignment with the best practices (NAMS)
- Integrated approach across NZ
- Consistency of national KPIs
- Not re-inventing the wheel
- The “Go-To” centre
- Trusted, impartial, independent

How? When?

- Support of Minister
- Business case development
- Secure funding ...

- ... in meantime, continue to develop and promote best practice



New Zealand

IPWEA

INSTITUTE OF PUBLIC WORKS
ENGINEERING AUSTRALASIA

informs...
connects...
represents...
leads

Saving the world?

Help us try