



Department of Conservation  
*Te Papa Atawhai*



hauraki  
railtrail

[www.haurakirailtrail.co.nz](http://www.haurakirailtrail.co.nz)





# Hauraki Rail Trail – The Process

- Announced as one of 7 Quick Starts in August 2009
- HDC Appointed as lead agency
- Feasibility Study
- Awarded \$4M by MED
- 3 Councils contribute between \$500,000 and \$700,000
- Construction
- The Business end of HRT



# Hauraki Rail Trail - Feasibility

- Financially feasible as a GRADE 1 cycleway
- Construction of a Grade 1 feasible
- Land access issues
- Legal due diligence
- Ongoing maintenance to be a HRT and NOT ratepayer cost



# Hauraki Rail Trail – Grade 1

- 98% of a days ride not to exceed 2%
- Remaining 2% not to exceed 4%
- 2.5 m wide
- 6m curve radius
- Bridges 1.5m
  
- i.e. Flat!



No Dogs allowed on the trails due to farming activities

- A** Tukaki Road - Tirohia
- B** Station Road - Mangaiti
- C** Hikutaia
- D** The Cheese Barn at Matatoki
- E** Karangahake Hall
- F** Karangahake Gorge Car Park
- G** Victoria Battery Site
- H** Waikino Railway Station



**Hauraki Rail Trail Services**

- Sherpa Bus
- Baggage & Bike Movements
- Trail Shuttle
- Secure Car Parking
- Bike Hire
- Accommodation Booking Service
- Guided Trips
- Safety & Track Information
- Emergencies & Assistance

phone: 07 219 3233  
 mobile: 029 332 6759  
[www.haurakirailtrail.co.nz](http://www.haurakirailtrail.co.nz)

Hauraki Rail Trail Ltd  
 407 Mackay Street  
 Thames 3500





# Hauraki Rail Trail - Relationships

- Hauraki District Council
- Ministry of Tourism / MED / MBIE
- Matamata-Piako DC
- Thames-Coromandel DC
- Iwi (5 – 7)
- Department of Conservation
- Waikato Regional Council
- Farmers Fed / Adjacent Landowners
- NZTA



# Hauraki Rail Trail

- Three keys to the success of the HRT Project
  1. Consultation
  2. Consultation
  3. Consultation



# Hauraki Rail Trail - Regulatory

- Consents
  - TCDC – limited notifiable Land Use Consent
  - MPDC – limited notifiable Notice of Requirement for designation change
  - HDC – Land use and Resource consents
  - Waikato Regional Council – Bridges & Earthworks
  - Building Consents across all 3 districts
    - Bridges
    - Toilets
  - Variations to Consents (BC & RC's)





# Hauraki Rail Trail - Regulatory

- Historic Places Trust Approvals
  - Rail Corridor – Thames to Te Aroha (2 Approvals)
  - Crown Hill Bridge
  - Variations to Approvals and Accepted Archaeologist
  - Toilet at Victoria Battery
  - Waikino to Waihi



# Hauraki Rail Trail - Regulatory

- Leases / Easements
  - KiwiRail
  - 1 Lease over Pvt Land and 2 easements
- MOU's
  - TCDC
  - MPDC
  - WRC
  - DoC



# Hauraki Rail Trail - Regulatory

- Concessions
  - DoC
- Licence to Occupy
  - WRC
  - Farmers (LTO from HDC – 97 in total)
- Approvals from NZTA for crossings and sections within SH road reserve
- Approvals from Roading Managers for crossings etc on local roads

# Iwi Consultation



Hauraki Rail Trail – proposed cycleway development



Waitoki Bridge

5 wire and post fence on eastern side to trail

Hauraki Rail Trail – 2.5m wide formed path in 4-5 m wide corridor.

Track on western side of rail alignment, slope towards farm drain.

On section where embankment has been removed, ground to be levelled and shaped – refer to archaeologists advice on cut and fill areas. Note: track level to be no more than 50 mm above existing ground levels.

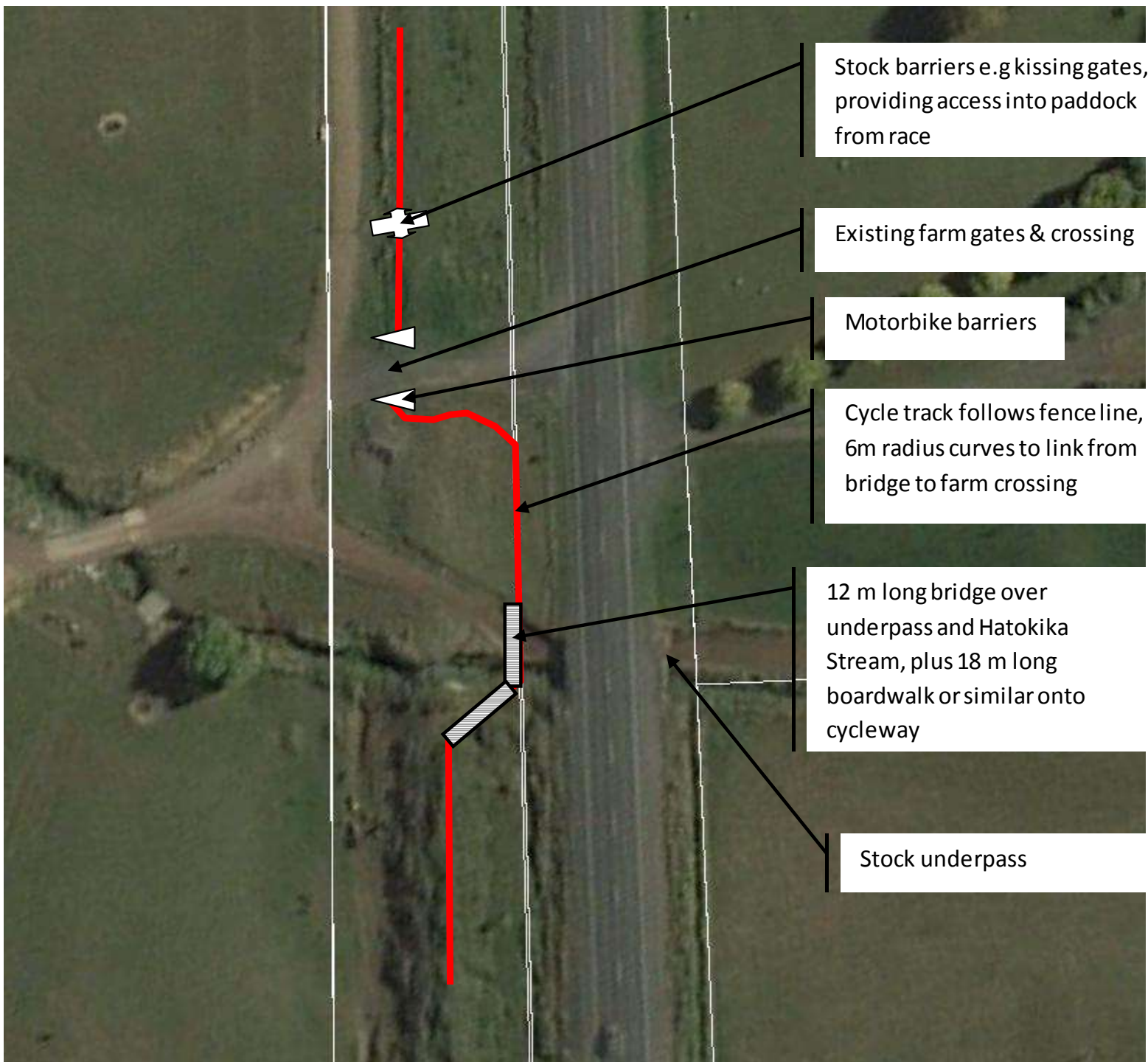
Stock barriers e.g kissing gates

Existing farm gates

Motorbike barriers

12 m long bridge over underpass and Hatokika Stream, plus 18 m long boardwalk or similar onto cycleway

Stock underpass



Stock barriers e.g kissing gates, providing access into paddock from race

Existing farm gates & crossing

Motorbike barriers

Cycle track follows fenceline, 6m radius curves to link from bridge to farm crossing

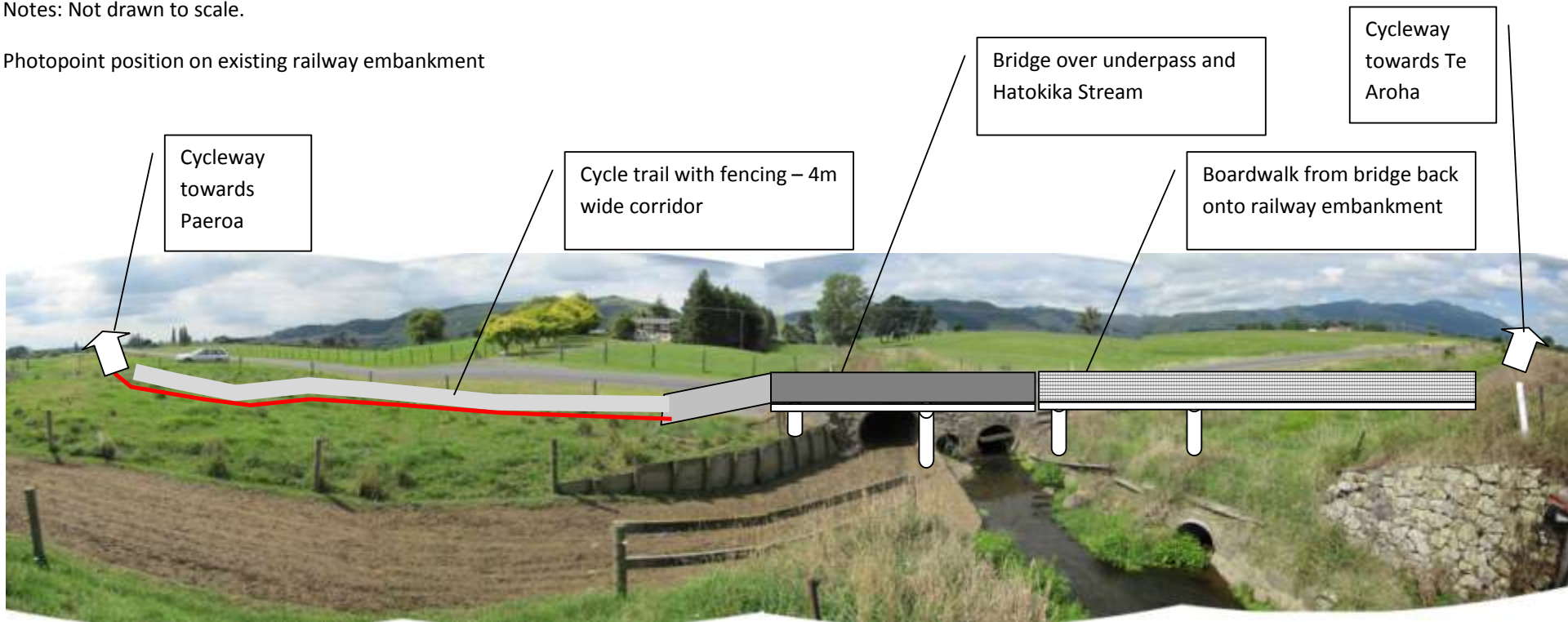
12 m long bridge over underpass and Hatokika Stream, plus 18 m long boardwalk or similar onto cycleway

Stock underpass

Shallue property – schematic photo montage of cycleway over underpass crossing

Notes: Not drawn to scale.

Photopoint position on existing railway embankment









# Hauraki Rail Trail - Construction

- 15 Track Construction Contracts
- 3 Bridge Construction Contracts
  - Pole / Steel Bridges (up to 8m or re-deck existing)
  - Glulam Bridges (single spans up to 25m)
  - Suspension Bridges
- 1 Underpass Contract
- 1 Lighting Contract
- Various Vegetation removal / spraying contracts



# Hauraki Rail Trail - Construction

- 6 Fencing Contracts
- Various other structures (bike barriers etc)
- Various Vegetation removal / spraying contracts
- Signs



# Hauraki Rail Trail - Construction

- All Contractors were local i.e. Approx \$5M into local business communities
- All contracts completed within time frames
- Construction costs under budget



# Hauraki Rail Trail – A Grade 1 Trail

- Construction (excl Waikino to Waihi)
  - Track construction
    - 70 km's track
  - Bridges
    - 39 bridges
      - Shortest – 4 metres
      - Longest – 85 metres
      - Total length of all bridges – approx 740metres !!!
  - Fencing
    - Over 130 km's



# Hauraki Rail Trail

- Construction Issues
  - NOT a road!
  - There have been no significant issues since the construction has started
  - Site specific items are addressed with each adjacent landowner prior to undertaking the works
  - Location of the fibre optic cable in Te Aroha section
  - We now own a dead cow...



# Hauraki Rail Trail

- Consultation
  - Iwi
  - Farmers
  - Adjacent landowners
  - Communities
  - 3 District Councils

On-going process throughout construction process and then as part of cycleway management.









# Hauraki Rail Trail





# Hauraki Rail Trail





# Hauraki Rail Trail - Before





# Hauraki Rail Trail - After





# Hauraki Rail Trail





Photo Courtesy of Nigel Campbell











# Hauraki Rail Trail – Bike Barriers



# Hauraki Rail Trail – Bike Barriers





# Bike Barriers





# Hauraki Rail Trail - Governance

- Joint Committee – Construction Phase
  - 3 Mayors (TCDC, HDC & MPDC)
  - 3 Iwi Representatives
- Hauraki Rail Trail Charitable Trust
  - 3 Council appointed Trustees
  - 3 Iwi Appointed Trustees



# Hauraki Rail Trail - Business

- Day to day managed by a Principal Trail Manager
- Use of trail by public is free
- Businesses using the HRT for commercial purposes pay a 15% commission towards maintenance, management and marketing
- Web-based booking system used to “clip the ticket”
- Branding of HRT / IP



# Hauraki Rail Trail – Key Dates

- Karangahake to Waikino – upgraded September 2011
- Paeroa to Te Aroha – February 2012
- Paeroa to Karangahake – March 2012
- Paeroa to Kopu – May 2012 (4<sup>th</sup> at 19h00!!!)
- Official opening - 5 May 2012
- Kopu to Thames – August 2012



# Hauraki Rail Trail – Operational

- Problems
  - Car parking 😊
  - Dogs 😞
  - Rabbits...
- Business feedback / Economic benefits
  - Reports of 70% increase in June turnover
  - Businesses increasing kitchen size
  - Employment increases

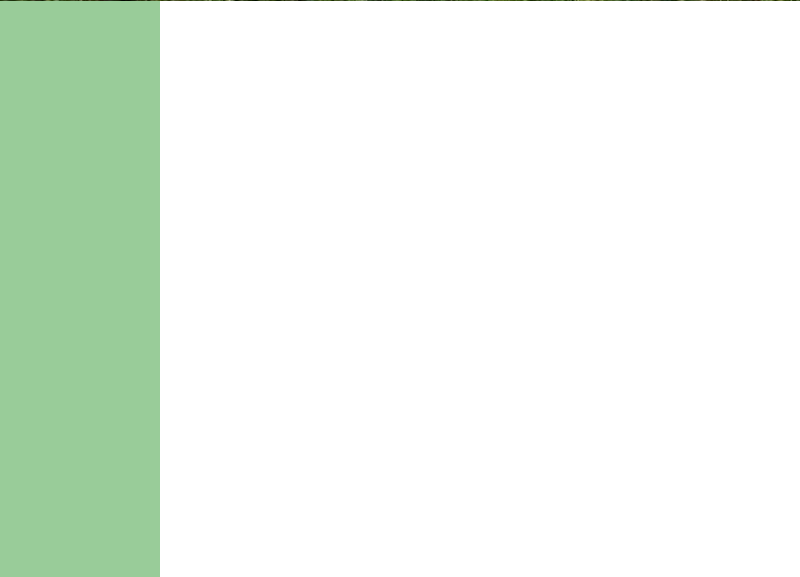
And we are haven't got to the busy months...





# Hauraki Rail Trail – After the Rain







# Hauraki Rail Trail





# In Memory of Alistair Muirhead

