

CoPTTM and LRS



Project Overview

- Revision of CoPTTM enables inclusion of LRS
- New edition will include:
 - All aspects of LRS
 - IRG amendments (2006 to 2009) and Technical notes e.g. Speed hump
 - Changes to content to make easier to read
 - Level 1, LV and Local Roads layout distances combined into one table = Level 1

Layout distances table
Level 1

Layout for Level 1

Site layout distances

| Posted speed limit, or RCA designated Operating Speed | | 50 km/h | 60 km/h | 70 km/h | 80 km/h | 90 km/h | 100 km/h |
|---|--|---------------|---------|---------|---------|---------|----------|
| Traffic Signs | | | | | | | |
| A | Sign Visibility Distance (m) | 50 | 60 | 70 | 80 | 90 | 100 |
| B | Warning Distance (m) | 50 or 30* | 80 | 105 | 120 | 135 | 150 |
| C | Sign Spacing (m) | 25 or 15* | 40 | 50 | 60 | 70 | 75 |
| Safety Zones | | | | | | | |
| D | Longitudinal (m) + <i>+(Not required if less than 500vpd)</i> | 10 or 5* | 15 | 30 | 45 | 55 | 60 |
| E | Lateral (m) + <i>+(Optional if less than 500vpd)</i> | 1 | 1 | 1 | 1 | 1 | 1 |
| Lane Widths | | 30km/h | | | | | |
| F | Minimum Lane Width (m) | 2.75 | 3.0 | 3.0 | 3.25 | 3.25 | 3.5 |
| Tapers | | | | | | | |
| G | More than 500 vpd Taper Length (m) # | 30 | 50 | 70 | 80 | 90 | 100 |
| G | Less than 500 vpd Taper Length (m) # | 25 | 30 | 35 | 40 | 45 | 50 |
| K | Distance between Tapers (m) | 40 | 50 | 70 | 80 | 90 | 100 |
| Delineation Devices | | | | | | | |
| Cone Spacing in Taper (m) | | 2.5 | 2.5 | 5 | 5 | 5 | 5 |
| Cone Spacing: Working Space (m) | | 5 | 5 | 5 | 10 | 10 | 10 |

| | |
|---|--|
| * | <i>Larger minimum distances apply to all State Highways and to Local Roads where there is more than one lane each way.</i> |
| + | <i>On roads carrying less than 500 vehicles per day (maximum of 40 vehicles per hour) the Longitudinal and Lateral Safety Zones may be reduced or eliminated in order to retain a single lane width. Positive traffic control and an appropriate TSL are to be used.</i> |
| # | <i>On Local Roads tapers may be reduced to 10 metres on 50km/h roads where accesses, intersections etc need to be accommodated. On all roads tapers may be reduced to 30 metres where a MTC (Stop/Go) situation applies.</i> |

When working on the **shoulder** of roads with less than 250 vpd (less than 20 vehicles per hour) use a TW1 advance warning sign and an amber flashing beacon on working vehicle (no Works End sign required). This method applies to roads with a posted or operating speed of less than 65 km/hr. Approval must be obtained from the RCA.

Except for taper lengths and delineation device spacings, which are maximum values, the distances specified in the above table are minimum values.

Proposed timeline

- Section development between
1st Feb and 30th June 2010

Opportunity to provide feedback on each
section – add name to list at end of session

Section A deadline 20 May

...to...

Section H deadline 30 June

- Final draft available for comments
31st July 2010
- Deadline for feedback 30 September
- Final edition made available online by
31st November 2010

System and operations

CoPTTM



- Section A – Forward, Introduction and General
- Section B – Equipment
- Section C – Static operations
- Section D – Mobile operations
- Section E – Appendices
- Section F – Example Layout Diagrams for Level 1
- Section G – Example Layout Diagrams for Level 2
- Section H – Example Layout Diagrams for Level 3
- Section I – Specific Activity procedures and diagrams

Proposed layout for
Level 1

TWO-WAY TWO-LANE ROAD

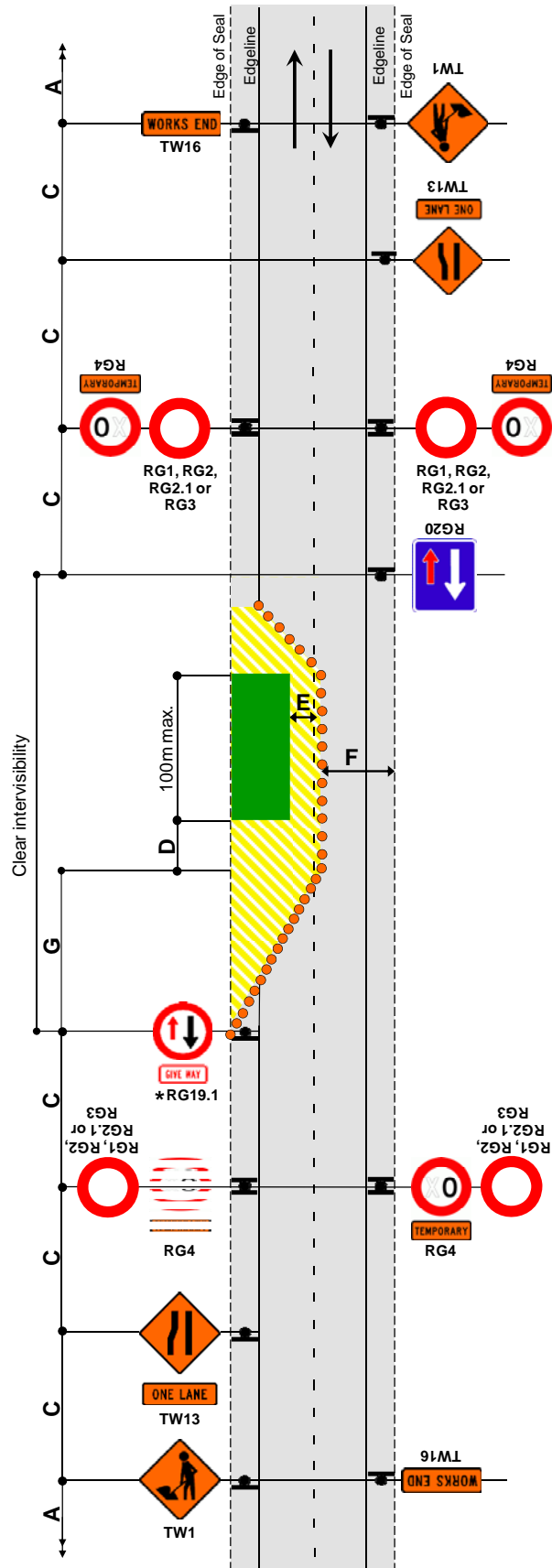
One Lane Closure – Traffic Volume less than 1000 vpd

E2.4

Level 1

Notes

1. * The RG-19.1 priority 'GIVE WAY' sign must be positioned on the approach with the least intervisibility
2. Cones required if edge of road is not well defined



Level 1 diagrams may be used as a TMD for Local Roads but are only **examples** for site specific diagrams at Level 1

Key

Working Area

Safety Zone

Cone

Traffic Control Devices Manual

| Part | Title |
|------|---|
| 1 | General requirements for signs |
| 2 | Guide and direction signs |
| 3 | Advertising signs |
| 4 | TCDs for general use: at intersections |
| 5 | TCDs for general use: between intersections |
| 6 | Speed management |
| 7 | Parking - currently published as Part 13 will be renumbered next revision |
| 8 | COPTTM - currently published as COPTTM |
| 9 | Level crossings |
| 10 | Motorways & expressways (ex MOTSAM3) |

Formats that CoPTTM will be made available in

ELECTRONIC OPTION

- Available from website:
 - PDF (with bookmarks) for downloading.

PRINT OPTION

- Order directly from printer
- Sections individually bound (including A5 version for Local Road TMDs)



○ Can order specific sections or a box set

NZ TRANSPORT AGENCY
WAKA KOTAHI

... About the review

- **The Reference group and working parties made up of:**
 - Contractors
 - Consultants
 - RCA forum members
 - NZTA
- **Edit team role**
 - Draft as directed by contributors
 - Manage the process
- **Working parties**
 - Develop specific sections (e.g. TMPs)
- **Reference group**
 - Send out drafts and coordinate feedback from their network

Proposed timeline

- Section development between
1st Feb and 30th June 2010

Opportunity to provide feedback on each
section – add name to list at end of session

Section A deadline 20 May

...to...

Section H deadline 30 June

- Final draft available for comments
31st July 2010
- Deadline for feedback 30 September
- Final edition made available online by
31st November 2010