



NZ TRANSPORT AGENCY
WAKA KOTAHI

**Local government &
Roads of National Significance
RCA Forum
4 September 2009**

Outline of this presentation

- Where NZ is heading
- Strategic networks
- Government policy statement
- RONS packages
- We need to work together
- Progress



Where is NZ heading

- Maintaining and enhancing an innovative, competitive, growing and vibrant economy that will attract further investment to the benefit of all NZers
- Doubling of freight task over the next 15-30 years, much of which will continue to be on road
- Need an efficient and safe land transport network of highways and rail connecting key areas of current and developing economic activity
- Good infrastructure is even more important for NZ because of our distance from markets, and our reliance on exports



Strategic networks

We need:

- o Key inter-regional routes complemented by and being complementary to:
 - o Local roading connections
 - o Rail
 - o Airports
 - o Ports (including inland ports)
- o To deliver end-to-end transport solutions for people and freight





12 | National State Highway Strategy Draft August 2008



National State Highway Strategy Draft August 2008 | 13

Government Policy Statement

In this context the Government is making a significant start by listing 7 initial roads of national significance that require significant development:

- SH1 Puhoi to Wellsford
- Completion of Ak Western Ring Route
- Auckland Victoria Park bottleneck
- Waikato Expressway
- Tauranga Eastern Corridor
- Wellington Northern Corridor
- Christchurch motorway projects



RONs packages

- Contributing to more jobs and higher incomes (narrowing the gap with Australia) through more efficient movement of freight and people (lowering the cost of transport)
- Providing network resilience to natural hazards and over-use (near 100% access to network along efficient and safe movement)
- Providing safer roads
- Contributing to the respective regional growth strategies (land use and economic activity)



RONs packages

- List of roads of national significance (RONs) is not an exclusive list
- Already high priorities for the respective regions
- Each is part of a wider package of works that will need to be undertaken
- Each RONs is at different stages of development



ROADS OF NATIONAL SIGNIFICANCE

AUCKLAND



CANTERBURY



WAIKATO



BAY OF PLENTY



WELLINGTON



RONs packages

- Some construction over the next 3 years:
 - VicPark Tunnel is getting underway
 - Tauranga Eastern Corridor
 - Some elements of Waikato Expressway
 - Some elements of Christchurch motorway projects
- Big push on planning and project development

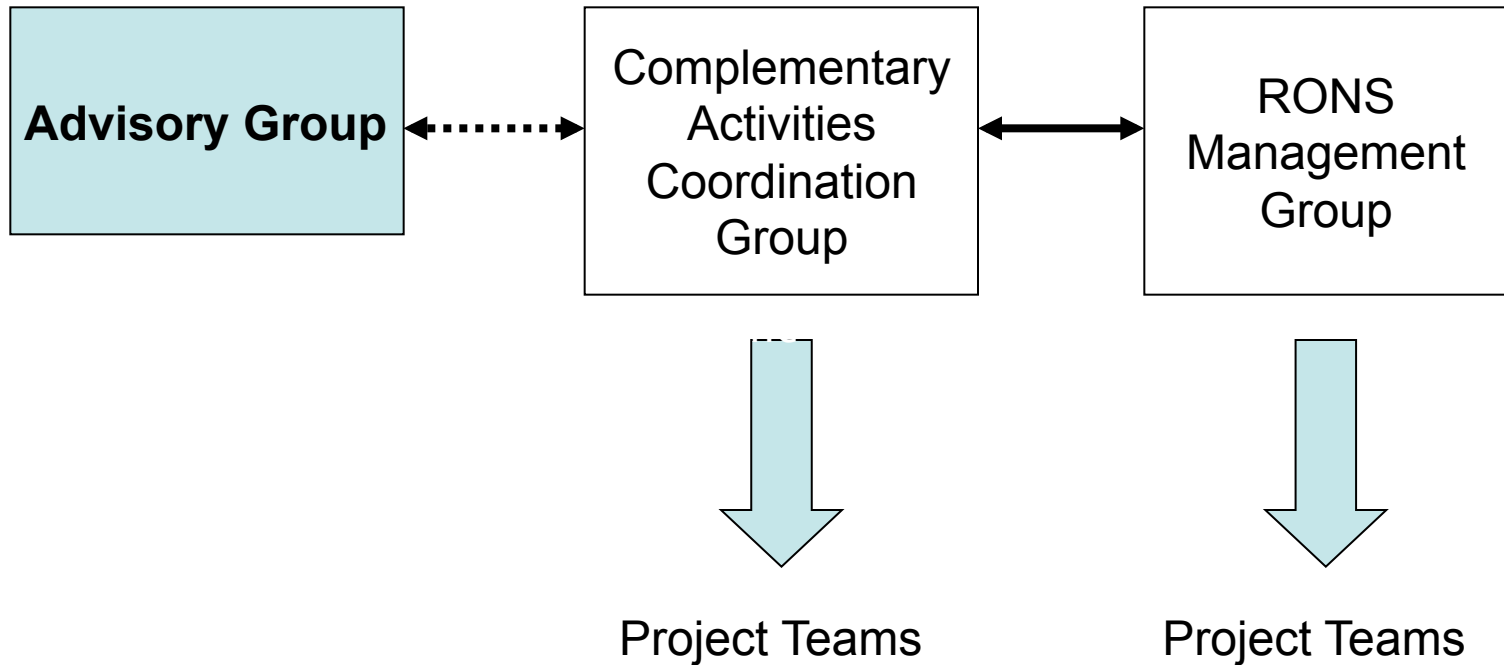


We need to work together

- Strategic priority for NZTA
- Looking to maximise regionalised delivery model supported by a clear national direction and overview
- Each RONS has its own type of management structure as relevant
- Sometimes joining into relevant regional structures eg Greater Christchurch Urban Development groups



We need to work together



Progress

- Structures have been, or are being, established by the relevant Regional Directors
- Much planning work is underway across many different fronts:
 - Accelerating current works programmes
 - Starting up new ones
- Still a work in progress to get it all up and running
- Looking to keep you involved and informed using the advisory and coordination groups and direct communications channels

