



NZ TRANSPORT AGENCY  
WAKA KOTAHI

# Economic Stimulus Package RCA Forum

April 2009

Cate Quinn, Programmes Manager, H&NO

---

# "Fast-tracked public projects give \$500m boost"

- o **Education** – \$216.7 million of spending, including five new schools, school refurbishments and maintenance and ICT infrastructure.
- o **Housing** – \$124.5 million of spending, allowing Housing New Zealand to upgrade and renovate 10,000 more state houses, and build 69 new state houses over the next six months.
- o **Transport** – \$142.5 million of spending, spanning five large state highway projects and a programme of smaller, regional roading improvement projects.

"These projects will get underway quickly – in many cases in the next few months – and they will keep more New Zealanders working as the global economic crisis is felt here," Mr Key said. "They were chosen because they are quality projects, they will make lasting contributions to our economy and they are ready to go."

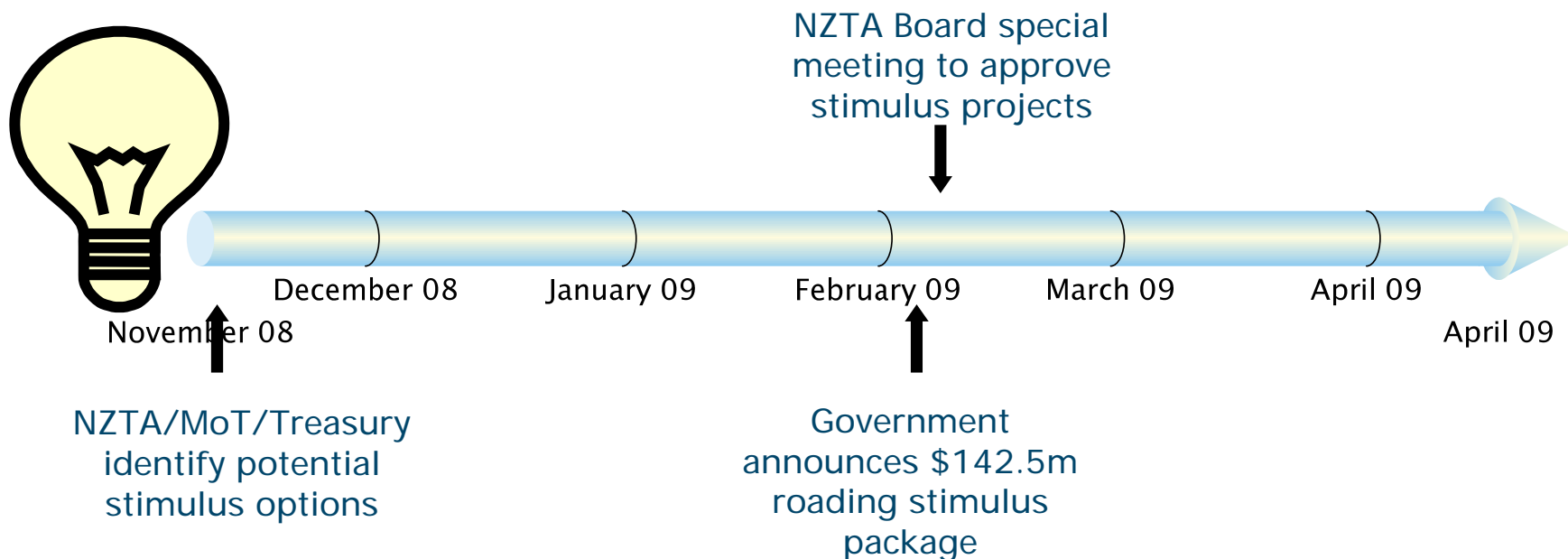
"They will employ New Zealanders and create work for businesses in regions, whether they are builders, plumbers or electricians. And their benefits will flow through communities by helping keep suppliers and sub-contractors, shopkeepers and sales staff in business."

John Key & Bill English, 11 Feb 2009

# Timeline to Stimulus Package

## Government Objective:

To accelerate projects under the Jobs and Growth Plan to keep more New Zealanders working, and create work for businesses in regions

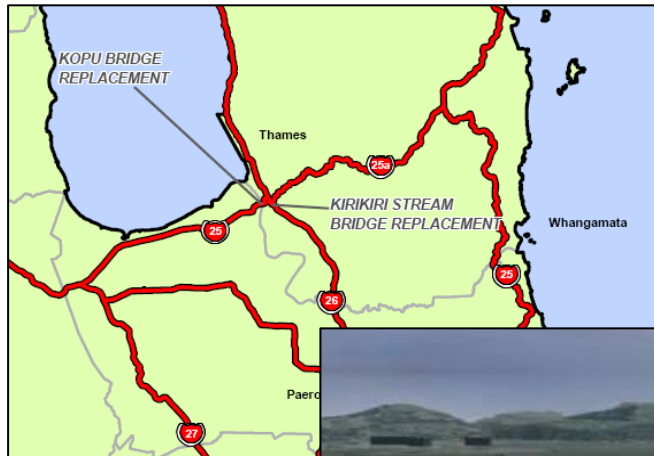


# What is in the Economic Stimulus Package?

## Selection Criteria

- Projects either “ready to go” or potential to accelerate to achieve construction start in next 12-18 months.
- 5 large projects accepted
  - Kopu Bridge (SH25, Waikato)
  - Matahorua Gorge (SH2, Hawkes Bay)
  - Hawkes Bay Expressway Southern Extension (SH50, Hawkes Bay)
  - Muldoons Corner (SH2, Wellington)
  - Christchurch Southern Motorway Extension (SH23, Canterbury)
- \$100M for additional small & medium sized projects (block) & pavement renewals
  - Spread across the country over 2.5 years
- This is additional to our existing work programme (approx. \$900M in 08/09)

# Kopu Bridge Replacement



The project will move traffic from the existing single lane Kopu River Bridge to a new two-lane bridge over Waihou River (near Thames) on State Highway 25.

Work will be undertaken on the bridge approaches, intersection improvements and flood protection works.



## Key Statistics

Project Cost: \$47M

Delivery Method: Construct only

Indicative Construction Start: Mid 2009

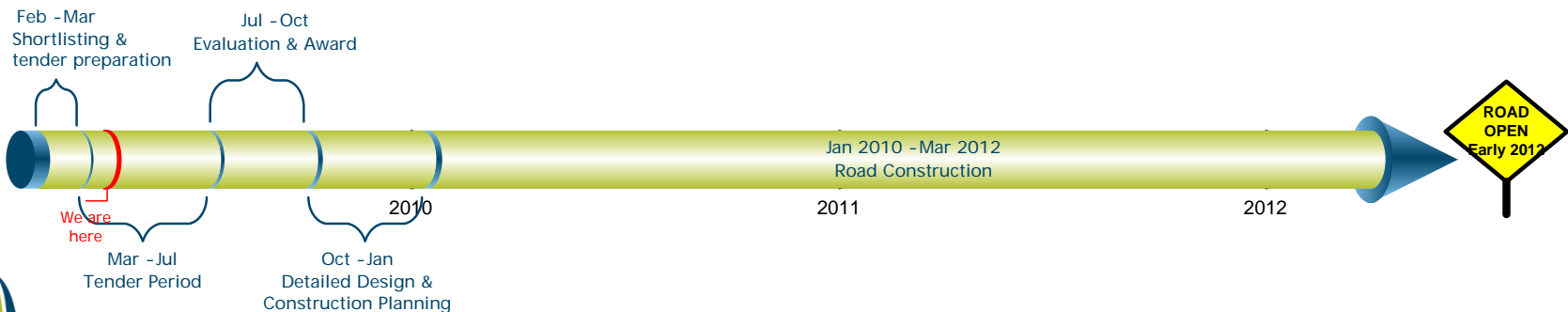


# Matahorua Gorge Realignment

3.1km rural realignment to replace a narrow and winding section of State Highway 2, 40km north of Napier. Includes a new 150m viaduct and a road over rail bridge.

## Key Statistics

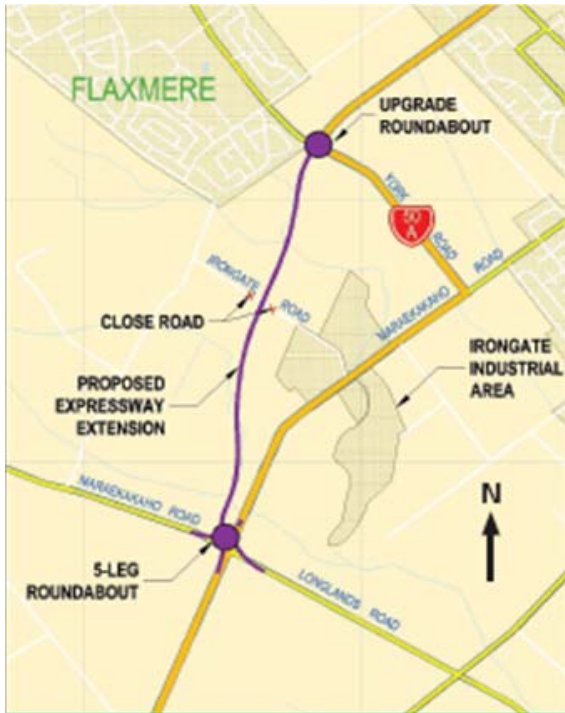
Project Cost: \$31M  
Project Length: 3.1km  
Delivery Method: Design & Construct  
Indicative Construction Start: December 2009



NZ TRANSPORT AGENCY  
WAKA KOTAHI

New Zealand Government

# Hawke's Bay Expressway Southern Extension



3.2 km rural two-lane expressway project, which will complete the final stage of the Hawke's Bay Expressway.

Provides a direct link between the roundabouts at Longlands Road and York Road.  
Removes a bottleneck and crash blackspot

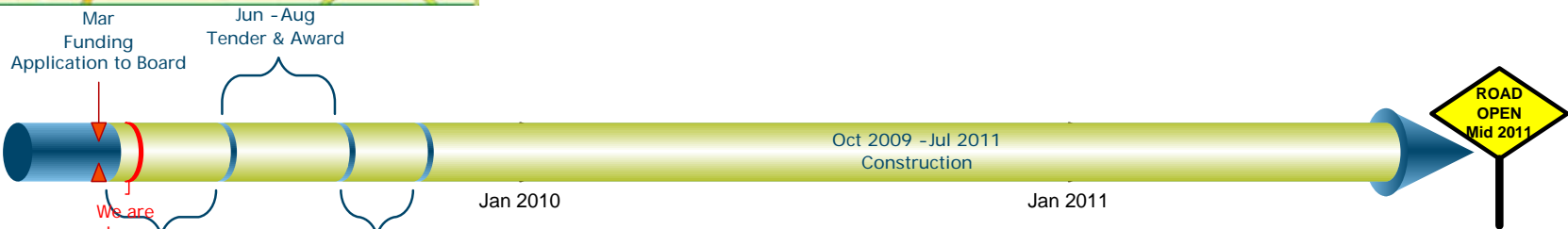
## Key Statistics

Project Cost: \$15M

Project Length: 3.2km

Delivery Method: Construct only

Indicative Construction Start: October 2009



**NZ TRANSPORT AGENCY**  
WAKA KOTAHI

**New Zealand Government**



# Rimutaka Corner Easing (Muldoon's)



Upgrade & realignment of 1km near the summit of the Rimutaka Hill Road. Aim to ease or eliminate a number of tight curves.



## Key Statistics

\$20M escalated construction cost

Delivery Method: Construct only

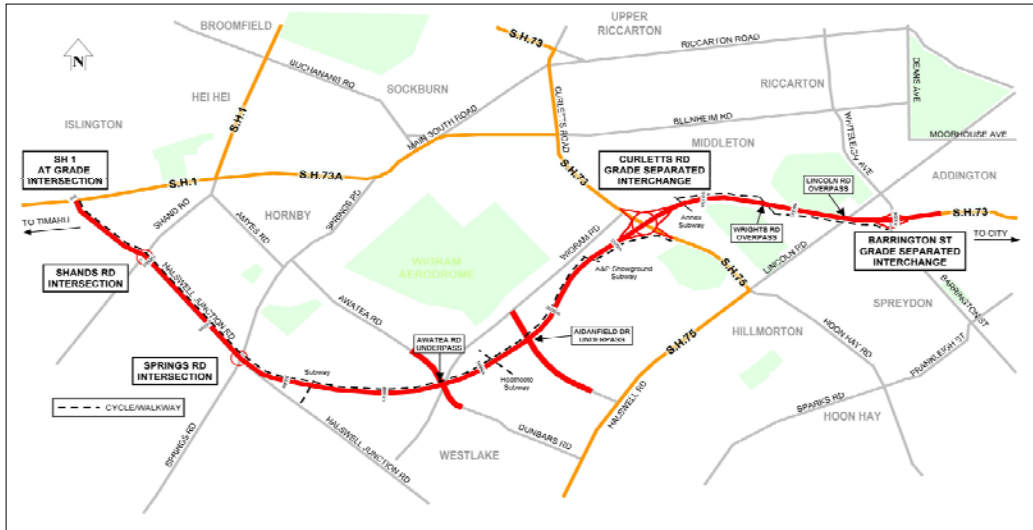
Earliest to Market: Feb 09

Earliest Construction Start: October 2009





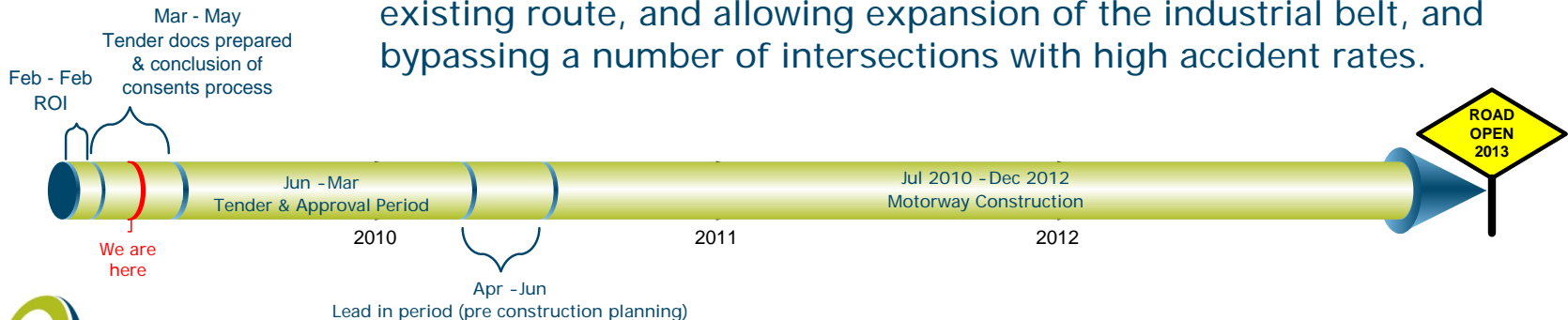
# Christchurch Southern Motorway Extension



## Key Statistics

Project Cost: \$180M  
 Project Length: 10.3km  
 Delivery Method: D&C  
 Indicative Construction Start: Mid 2010

Improves access between the south-west and the CBD of Christchurch City and to the Port of Lyttelton, addressing congestion along the existing route, and allowing expansion of the industrial belt, and bypassing a number of intersections with high accident rates.



# Small and medium sized activities & renewals

o Additional \$100m of activity over 2.5 years

o Indicative cash flow:

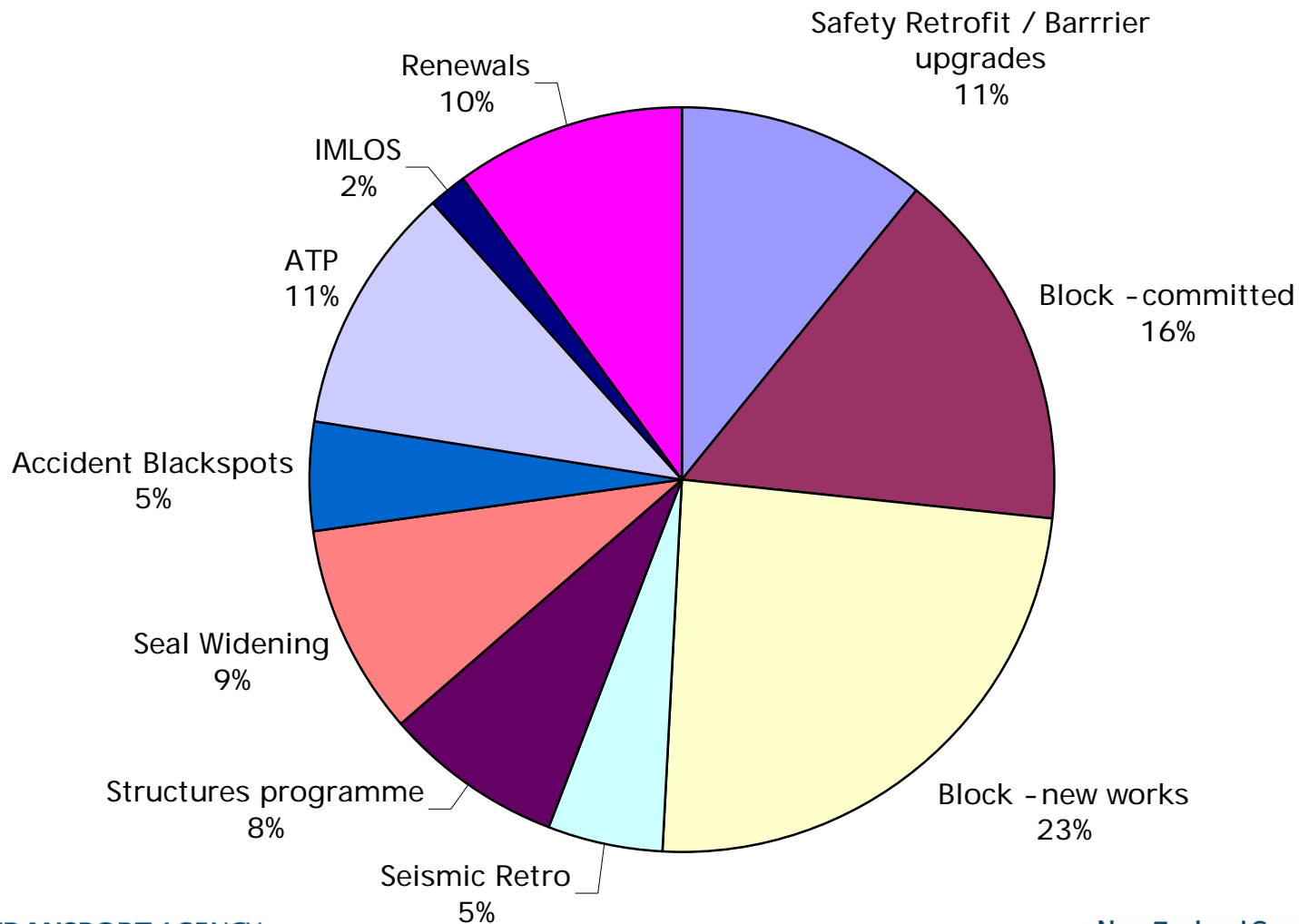
2008/09	2009/10	2010/11
\$35M	\$50	\$15M

o Activities include:

- Traditional block projects, passing lanes etc
- Safety Retrofit and Barrier upgrades
- Seismic Retrofit projects
- Safety Seal Widening
- Accident Blackspot Sites
- Audio Tactile Paving (Rumble Strip)
- Suitable number of development phases to protect future workload



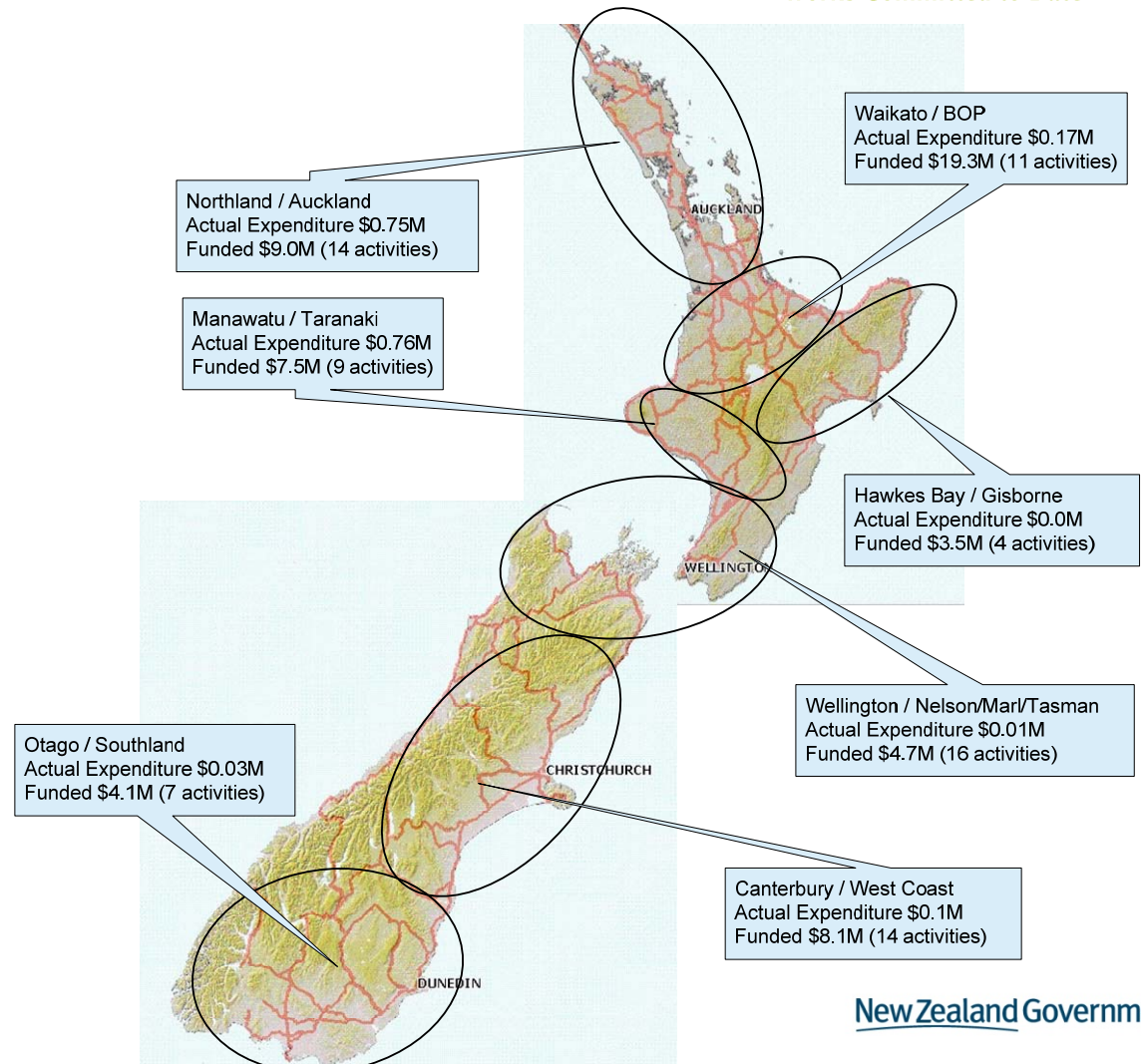
# Small and medium sized activities & renewals



# Small and medium sized activities & renewals

Works Committed to Date

## Current Progress



# Small and medium sized activities & renewals

