



NZ TRANSPORT AGENCY  
WAKA KOTAHI

# NZ Transport Agency Structure

Presentation to Road Controlling Authority

April 2009

**Kaye Clark, State Highway Manager, Hamilton**

---

# NZTA Structure



Geoff  
Dangerfield  
Chief  
Executive

## GROUP MANAGERS



Ernst Zollner  
Strategy and  
Performance



David Brash  
Partnerships  
and Planning



Colin  
Crampton  
Highways  
and Network  
Operations



Ian Gordon  
Access and  
Use



Liz Huckerby  
People and  
Capability



Allan Frost  
Organisational  
Support



# Highways and Network Operations (HNO)



Colin  
Crampton  
Highways  
and Network  
Operations

- Effectively a “Road Controlling Authority” within the NZTA
- Planning, operating, protecting, maintaining and improving the state highway network.
- Manage State Highways with the objective of optimising the wider transport network and maximising the safe movement of people and freight



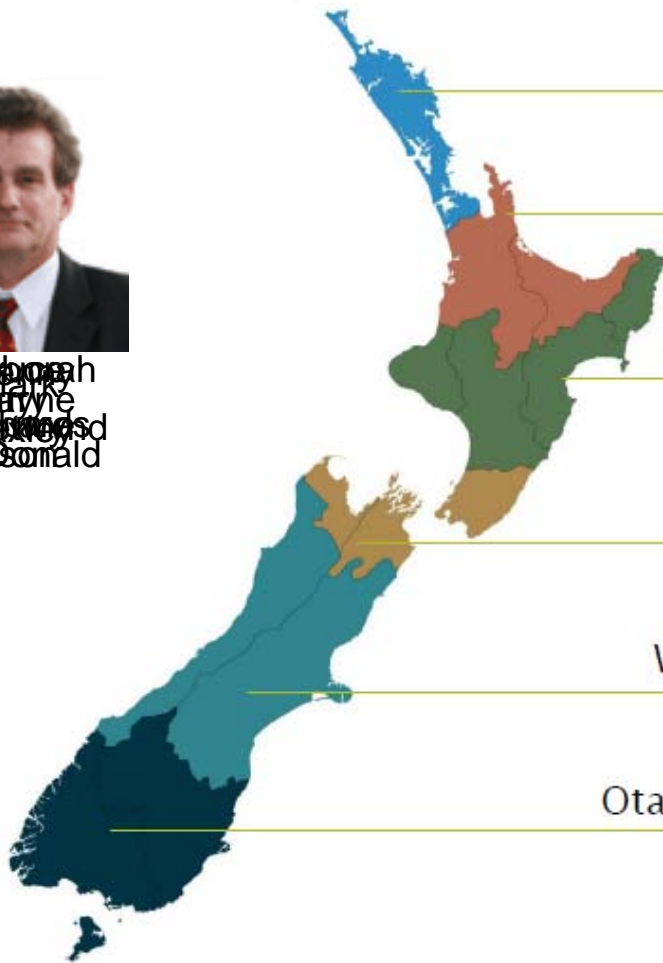
# HNO Key Themes

- Stronger customer focus
- Getting more out of the existing network to move more people and freight
- Unrelenting focus on Safety
- Helping people make better travel choices through improved traveller information
- Devolution to regional decision making (from recent legislative changes)

# How will the regions look



Deborah  
Maryle  
Elliott  
Millsom



Northland & Auckland

Waikato & Bay of Plenty

Taranaki, Manawatu-Wanganui,  
Hawkes Bay & Gisborne

Wellington, Nelson,  
Marlborough, Tasman

West Coast & Canterbury

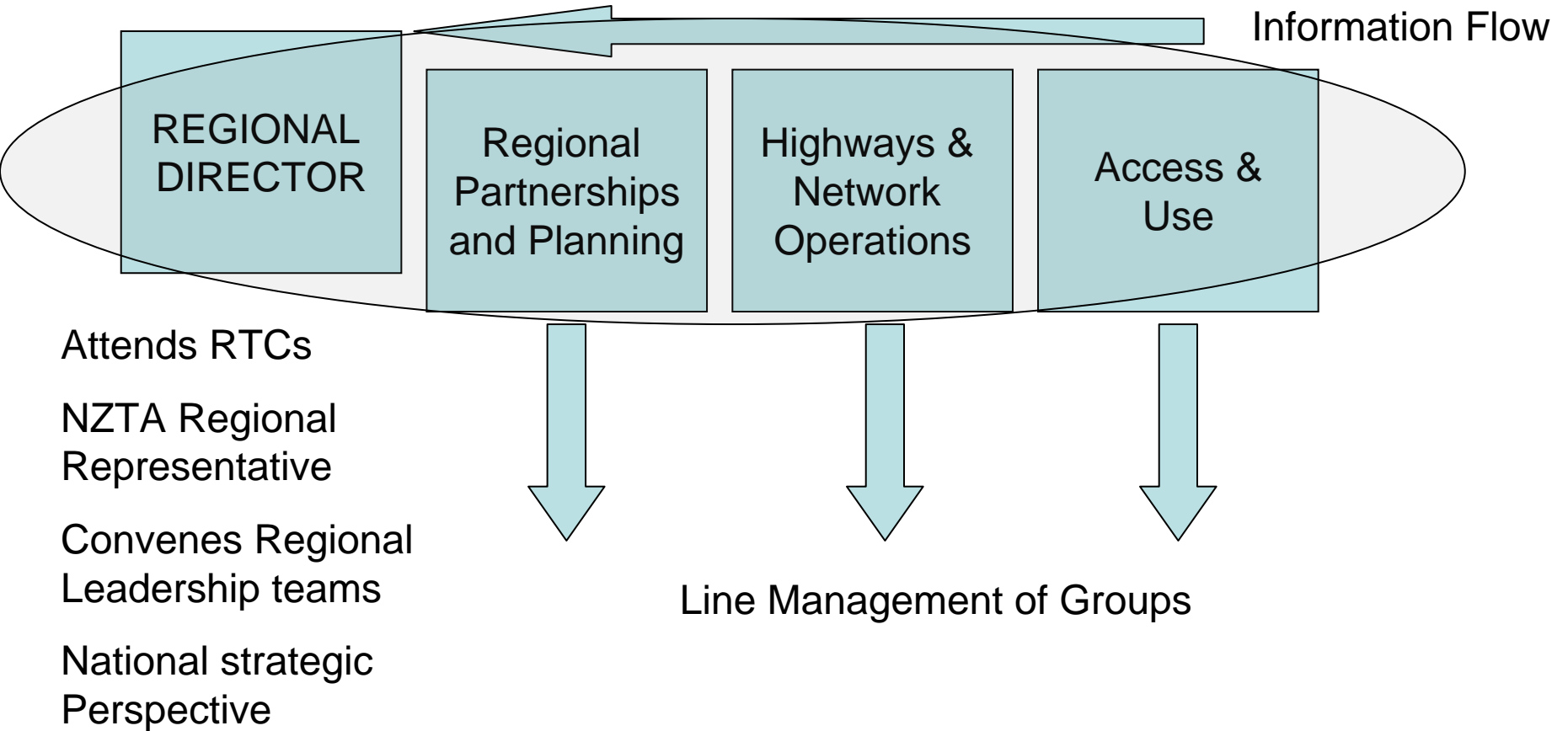
Otago & Southland



NZ TRANSPORT AGENCY  
WAKA KOTAHI

New Zealand Government

# Regional Leadership Teams

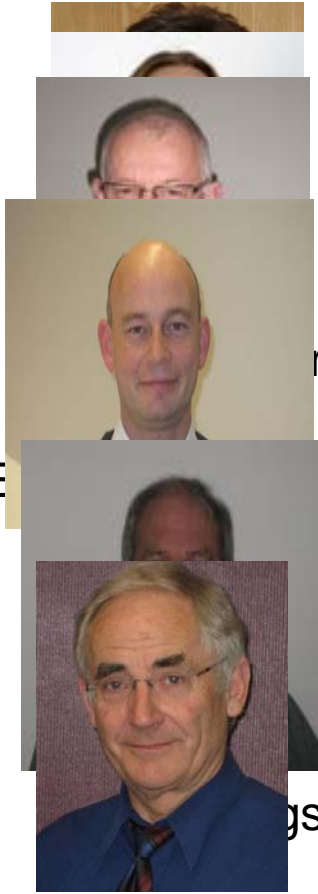


# Role of Regional Director

- Position & is evolving
- Direct link between NZTA Board / senior leadership team and each region
- Focus on engagement and coordination, not management
- Sits on Regional Transport Committee (but not ARTA)
- Supported by key regional staff from:
  - Regional Planning & Partnerships (for transport network planning and funding)
  - Highways & Network Operations (for highways development and operations)
- Responsible for good transport outcomes in the region



# How the regions look



Murray Clarke







Thank you



NZ TRANSPORT AGENCY  
WAKA KOTAHI

New Zealand Government