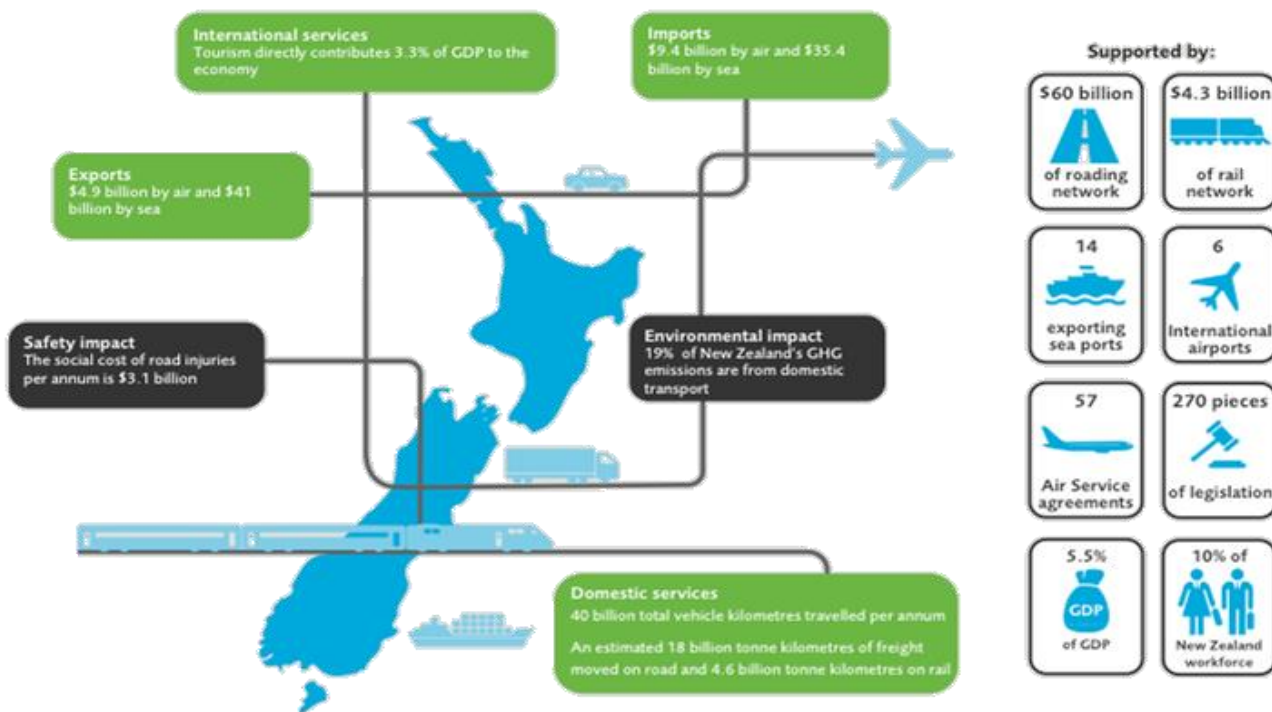




New Zealand's transport system



ECONOMIC ACTIVITY IS DEPENDENT ON EFFECTIVE TRANSPORT

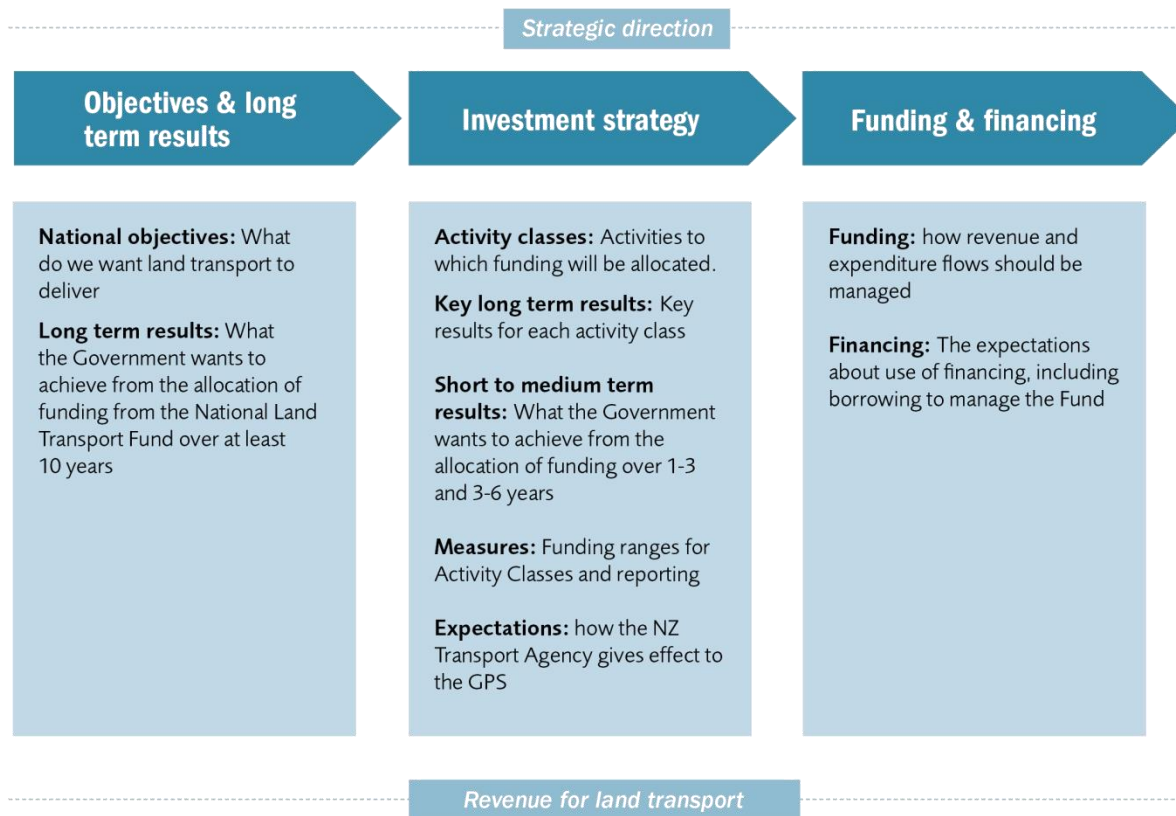


Connecting New Zealand and GPS 2012



- ▶ Supporting economic growth and productivity
- ▶ Road safety
- ▶ Value for money

GPS 2015: Architecture



Progress under GPS 2012



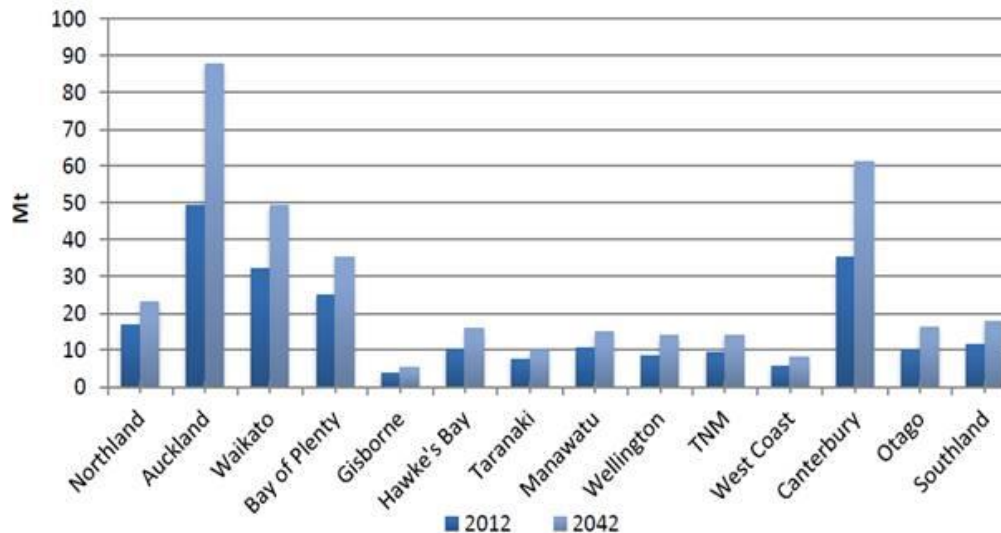
- ▶ Four of the six remaining Roads of National Significance (the RoNS) are expected to be completed, and the other two nearly completed, over the next six years, representing one of the largest investment programmes in road construction for many years.
- ▶ Good progress continues to be made on the Canterbury earthquake recovery.
- ▶ Rail electrification in Auckland is progressing well and public transport patronage has increased.
- ▶ Good progress has been made towards improving the safety of roads.

GPS 2015: Emergent issues



▶ Long term demand

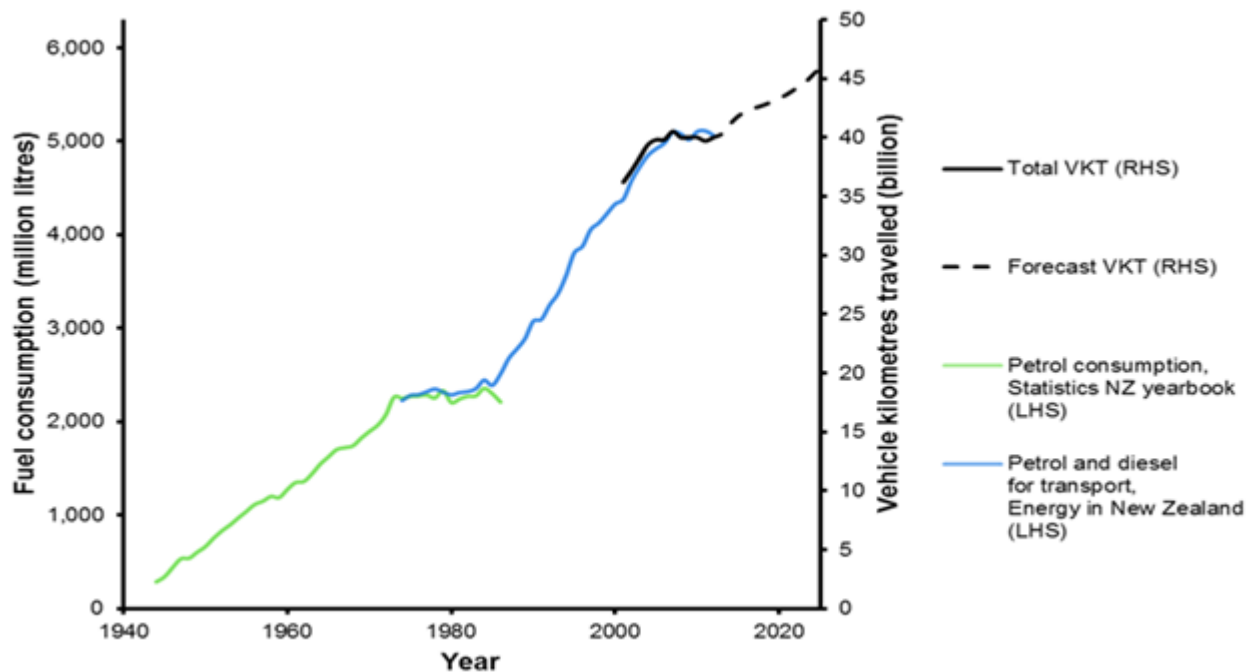
Changes in Freight Flows by Origin Regions 2012 and 2042
(million tonnes)



GPS 2015: Emergent issues



▶ Long term demand





Improvements

- ▶ Pressure points and bottlenecks around New Zealand
 - ▶ *Continued focus on congestion in the upper North Island and Canterbury*
 - ▶ *Continued focus on investment in regional freight infrastructure*

Maintenance

- ▶ Variability in standards and costs
 - ▶ *Continued focus on improved asset management*
 - ▶ *Continued focus on improved procurement*

GPS 2015: Timing and process



- ▶ We have already received considerable input from Local Government New Zealand and individual councils
- ▶ It is proposed formal engagement will begin in late May/June
 - ▶ Meetings with local government in Auckland, Wellington, Christchurch and Dunedin
 - ▶ Written submissions
- ▶ Release of the final GPS by the Minister is anticipated in July/August

Thank you

