

Creating great journeys

The challenge of keeping a dynamic transport system moving

Ryan Cooney
Manager CTOC

April 2014



Christchurch Transport Operations Centre



Content

- CTOC and its role.
- What is a dynamic network?
- Planned event management.
- Planned event example.

Christchurch Transport Operations Centre



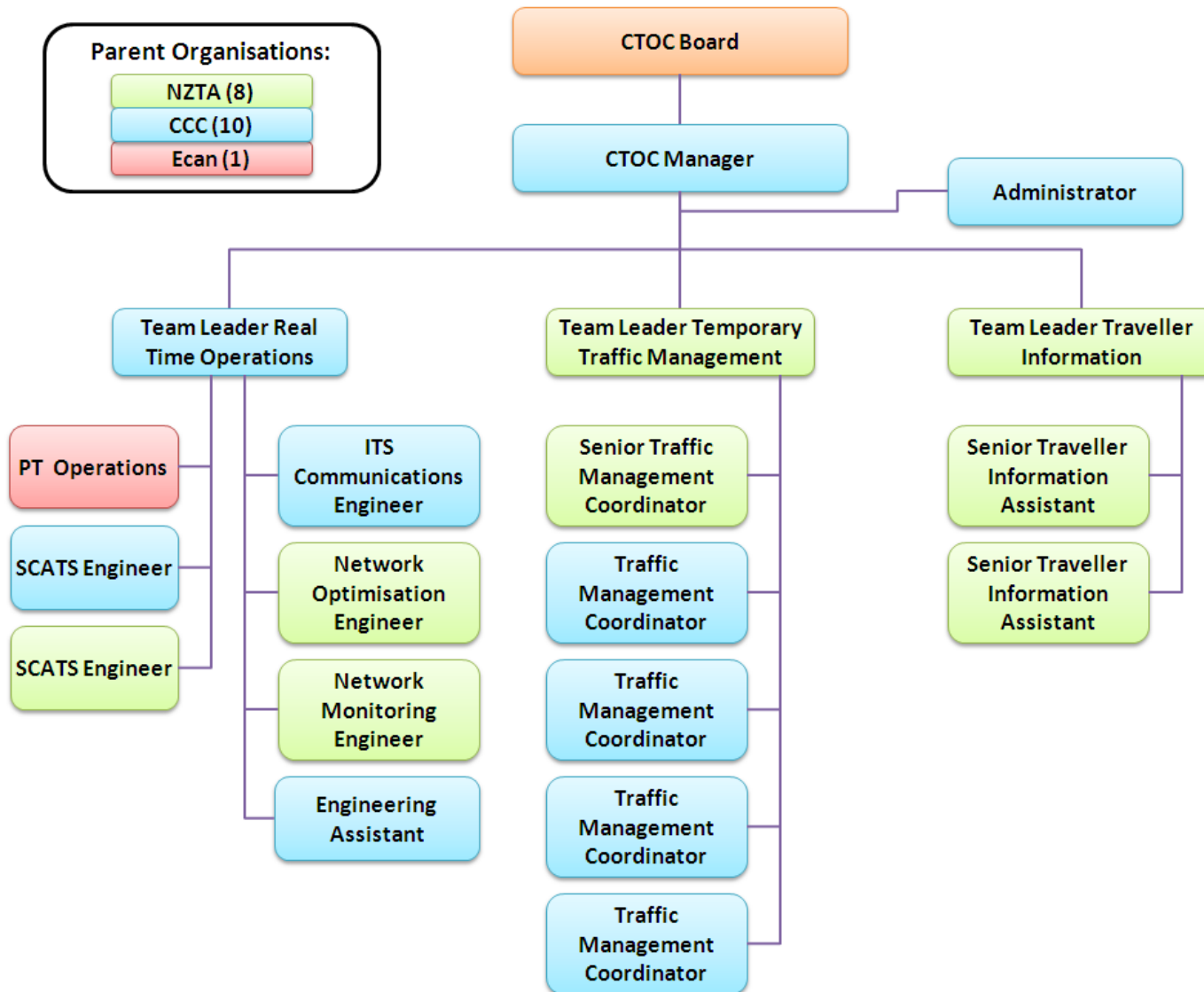
Christchurch Transport Operations Centre – who are we?

- One Team to operate the One Network
 - A partnership between CCC, Ecan and NZTA
 - Each partner is represented on the Governance Board and has staff in the centre.
- All CTOC Partners seeking to make best use of existing network
- One of three similar TOC's in New Zealand
 - Auckland - ATOC
 - Wellington - WTOC

Christchurch Transport Operations Centre



Christchurch Transport Operations Centre – who are we?



CTOC's Purpose and Priorities

- Purpose (paraphrased)
 - Keep Christchurch moving
 - Optimise function of existing network
 - Enable customers to make informed choices
 - Accommodate rebuild of Christchurch
- Priorities (2013/2014)
 - Embed a one network approach culture
 - Enable and actively support the rebuild of Christchurch
 - Optimise the efficiency of the key strategic routes

Christchurch Transport Operations Centre



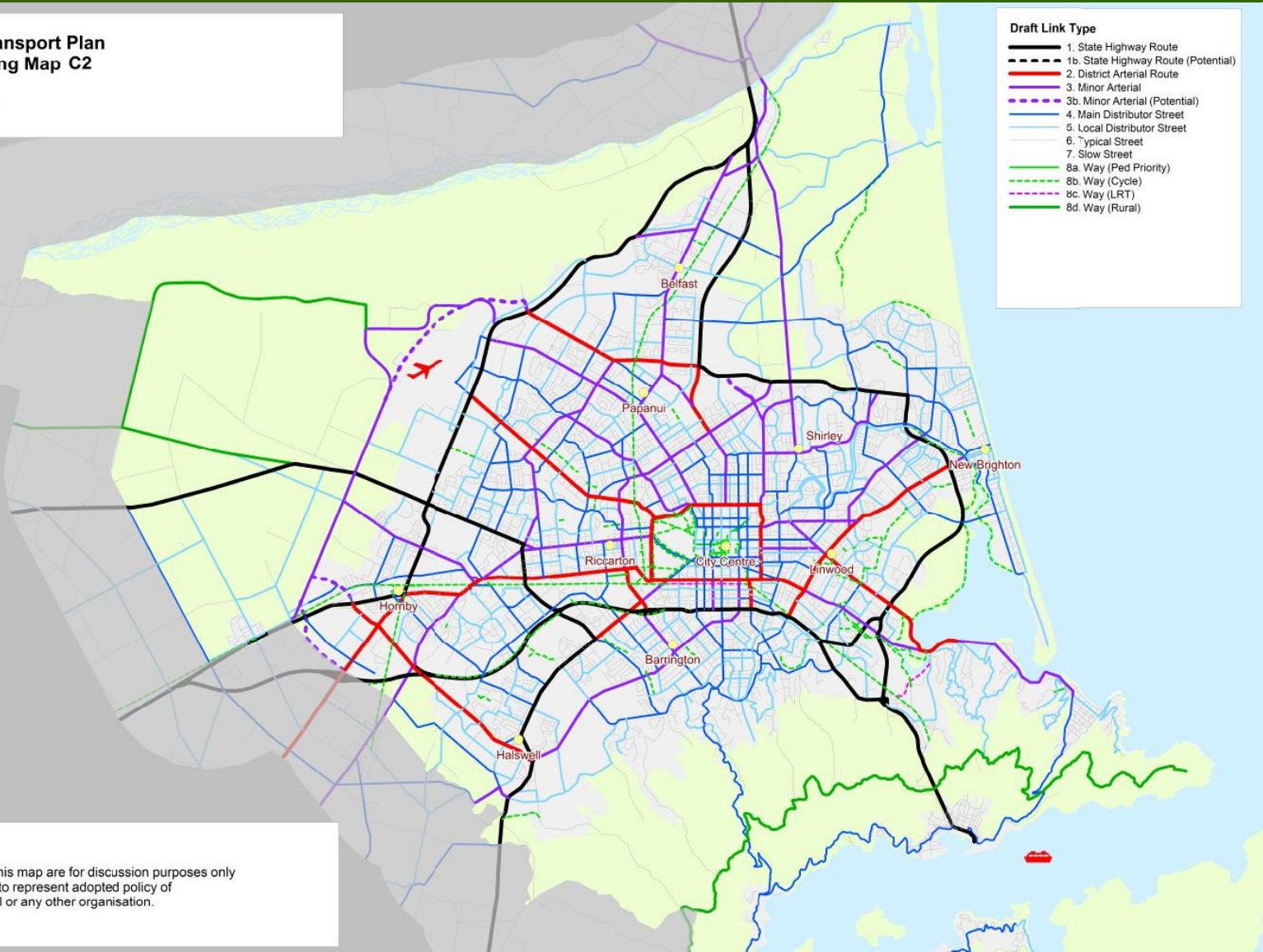
One Network – What is it?

Christchurch Transport Plan
Technical Working Map C2

Draft Link Types

Draft Link Type

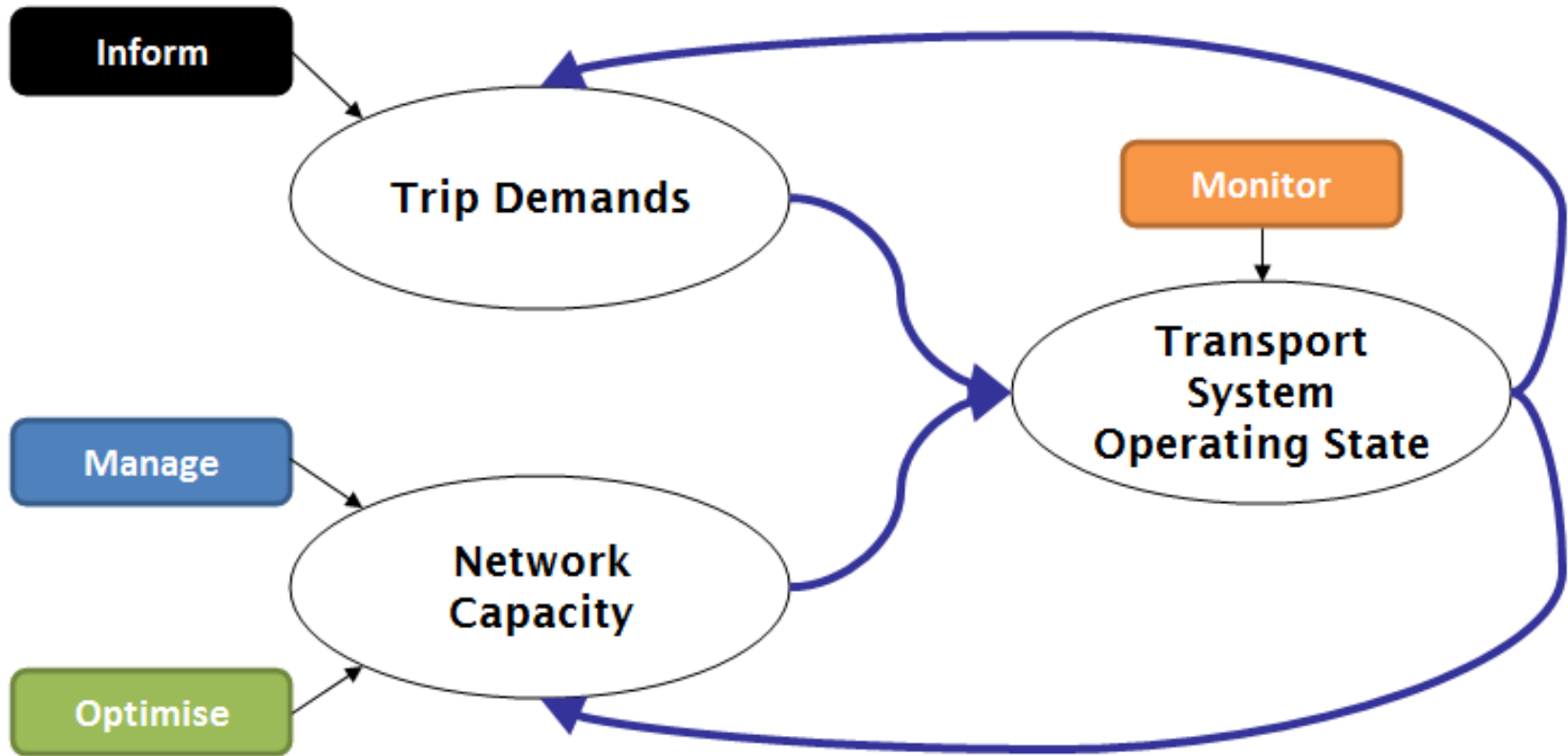
- 1. State Highway Route
- 1b. State Highway Route (Potential)
- 2. District Arterial Route
- 3. Minor Arterial
- 3b. Minor Arterial (Potential)
- 4. Main Distributor Street
- 5. Local Distributor Street
- 6. Typical Street
- 7. Slow Street
- 8a. Way (Ped Priority)
- 8b. Way (Cycle)
- 8c. Way (LRT)
- 8d. Way (Rural)



Notes:

The overlays shown on this map are for discussion purposes only and should not be taken to represent adopted policy of Christchurch City Council or any other organisation.

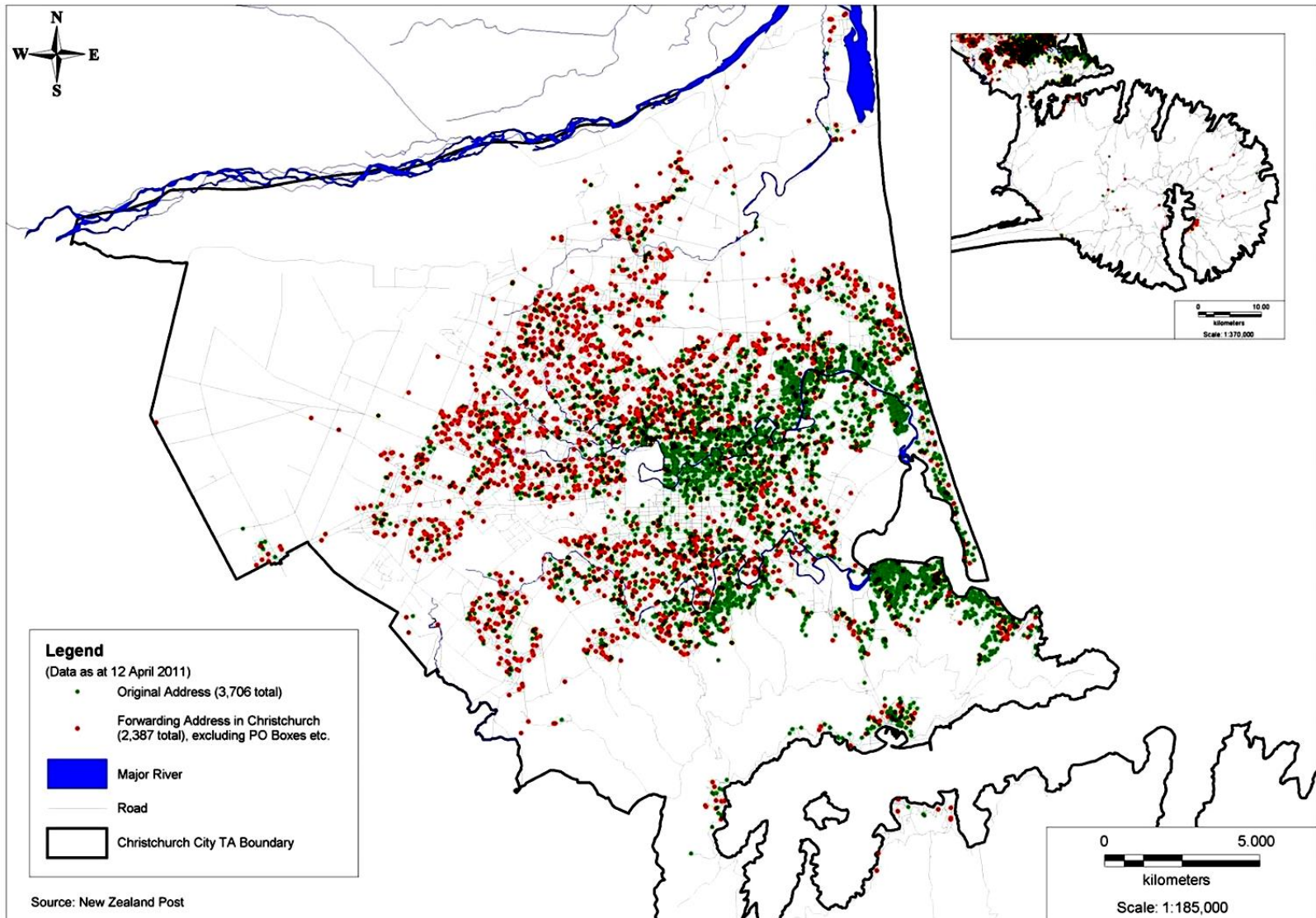
Transport System & CTOC's Core Functions



Christchurch Transport Operations Centre



Dynamic Transport System – Demand Changes



Dynamic Transport System – Supply Changes

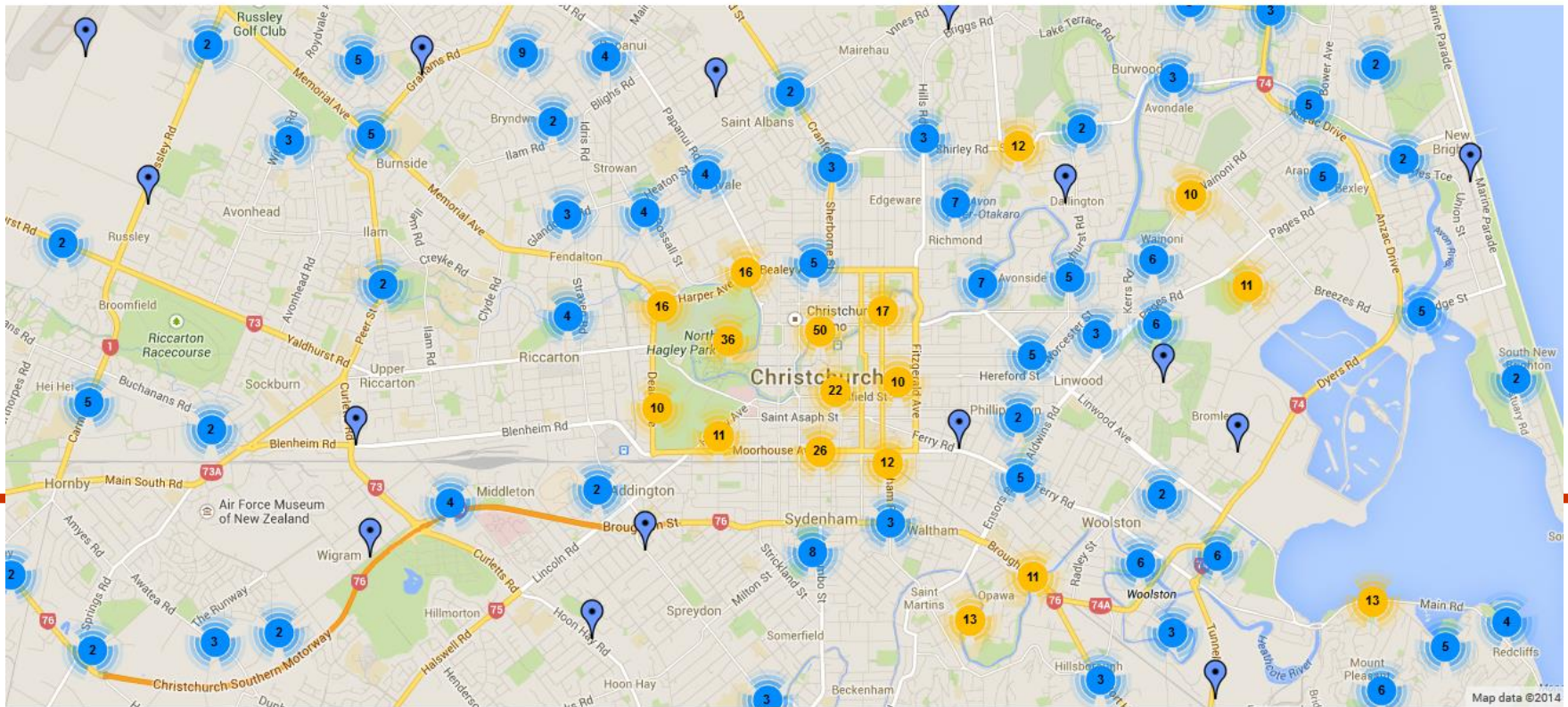
- 636 major worksites this week

New TMP | Manage TMPs | Manage Users | Map | Report an issue | News and Info | Reports | Logged in as Ryan Cooney | Logout

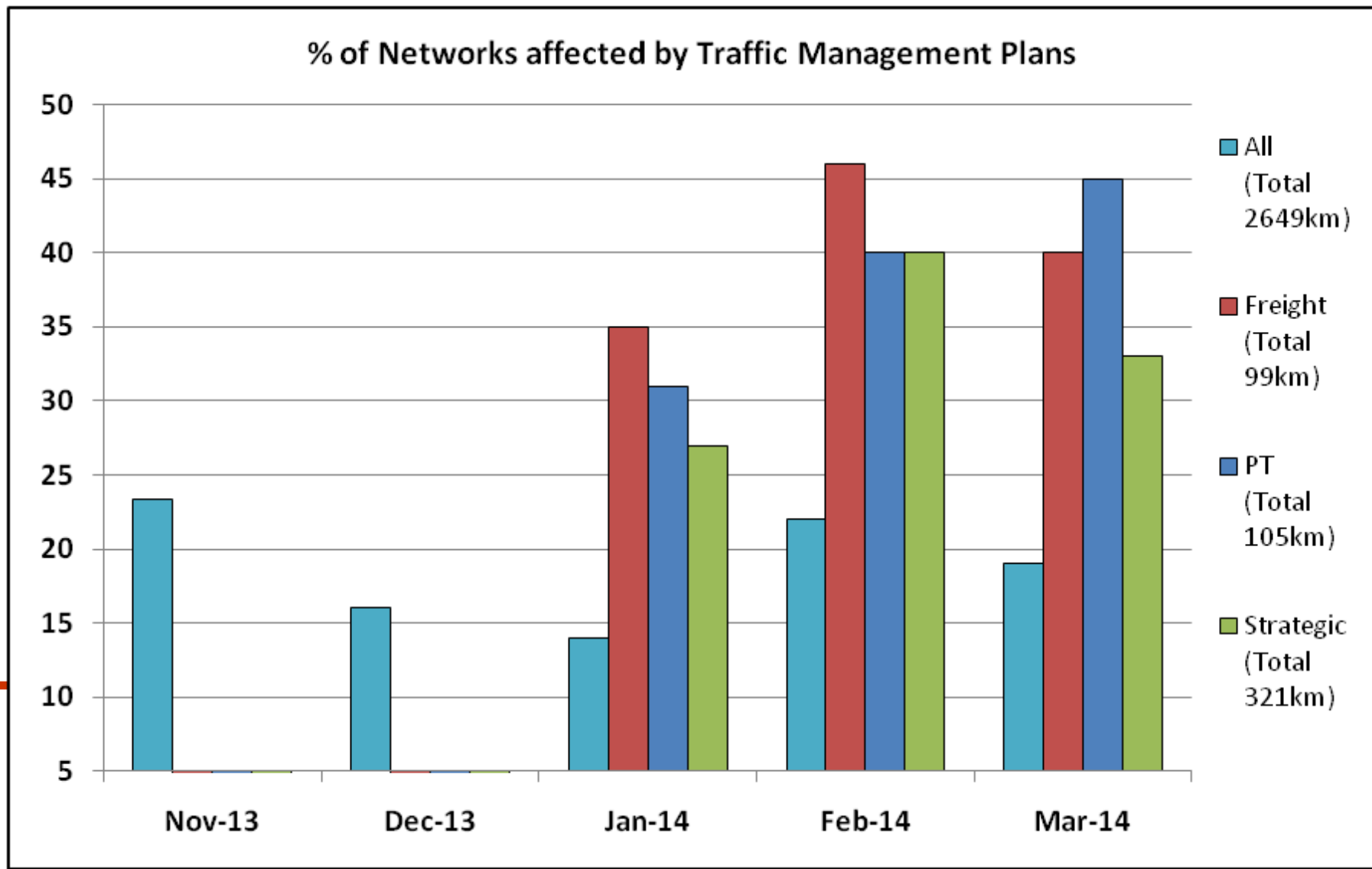
TRAFFIC MANAGEMENT PLAN ONLINE APPLICATION

06th May 2014

Start Date: 04 / 05 / 2014 End Date: 09 / 05 / 2014 go Find Address:



Dynamic Transport System – Supply Changes



CTOC - Event Management

- Chronic Issues – to be avoided
 - network wide
 - moderate increase in delay
 - long duration
- Acute – to be mitigated
 - isolated
 - significant increase in delay
 - short duration

Christchurch Transport Operations Centre



Planned Events – Network Management

- Transport Impact Management group
 - Chaired by CTOC
 - Participants include SCIRT, CERA, CCDU, CCC, Ecan
- Goal
 - *Maximise rebuild pace while managing network effects in an informed manner*

Christchurch Transport Operations Centre



Planned Events – Network Management

FORWARD WORKS MAP

LOG OUT | RYAN.COONEY@CCC.GOV.NZ - CTOC

Map Layers

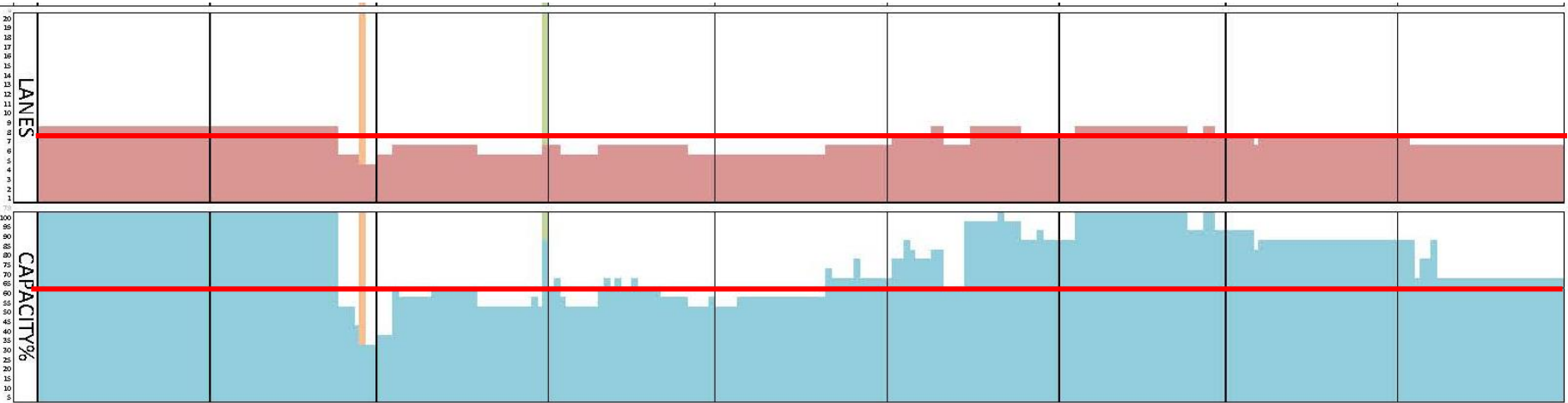
- Impacts
 - Traffic
 - Stop Go
 - Shoulder
 - Full Closure
 - One-Way Closure
 - Capacity Reduction
 - Lane Drop
 - Intersections
 - Stormwater
 - Water Supply
 - Sewer
 - Electricity
 - Gas
 - Telecommunication
 - Fibre
 - Car Parking - On Street
 - Car Parking - Off Street
 - Horizontal Projects

BASE MAP

Christchurch Transport Operations Centre



Planned Events – Network Management



Printed on 28/04/2014

Christchurch Transport Operations Centre



Traveler Information – Transport for Christchurch



[Home](#) [Map](#) [Daily Rooding Updates](#) [Roadworks](#) [Cycling](#) [News and events](#) [Travelling around](#) [About us](#)



LATEST TRAFFIC UPDATES

Moorhouse/Hagley Ave/Lincoln/Grove Rd intersection – DELAYS

16 hours ago

Anzac Drive/Bexley Road SH74 closure – now 1st April

5 days ago

Moorhouse Ave/Lincoln Rd/Hagley Ave night works – Milling and Paving

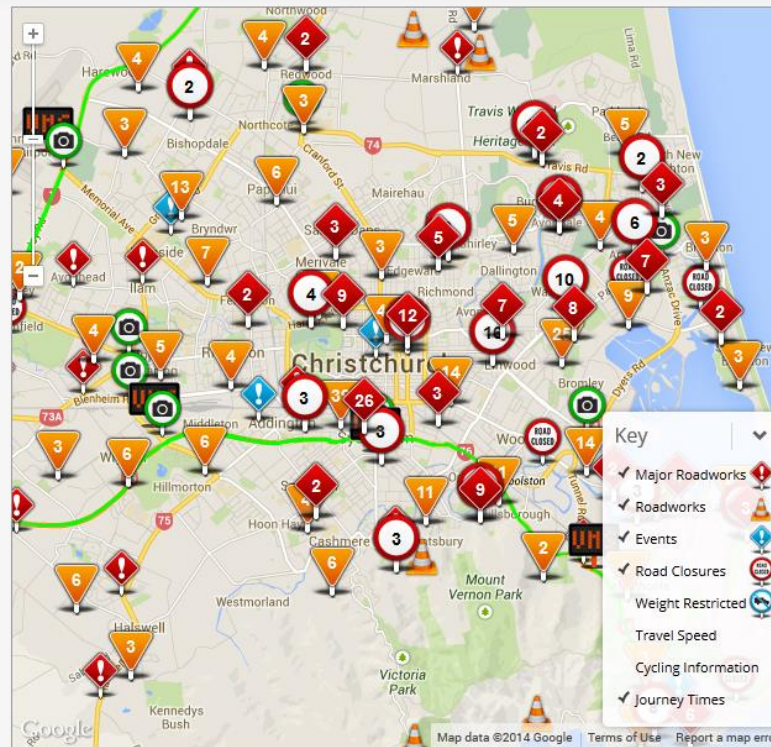
5 days ago

Restrictions around Kilmore/Victoria Street this week

5 days ago

Central City traffic impacts – preview for week 31st March

5 days ago



CBD – Available Routes Map 29th March – 5th April 2014

5 days ago

Real Time Travel Information

2 months ago

Traveler Information – Transport for Christchurch



Christchurch Transport Operations Centre



Planned Events – Demand Management

Radio was the most preferred method for receiving information about changes to traffic flow

83%

Do not consider road works or traffic flow issues before leaving home

The main types of information travellers required in order to make their journey decisions were:

1. The roads that are affected

2. Possible alternative routes

3. The impact of the road works (i.e. reduced to one lane)

Christchurch Transport Operations Centre



Planned Events - Demand Management

- Moving to
 - Pushing information to travellers - radio presence and social media
 - Focus on peak period real time information
 - Focus on strategic routes

Christchurch Transport Operations Centre



Planned Event Example – 7th March

The screenshot shows a news article from 'The Press' (press.co.nz) titled 'Traffic hell on central city streets' by Sarah-Jane O'Connor, dated 16:31 07/04/2014. The article features a photo of a traffic jam with a 'Gold Band Taxis' sign. A sidebar contains 'News Headlines' and an advertisement for 'in the know' website. An opinion poll asks 'How is your morning commute?' with options: 'Terrible and seems to be getting worse', 'Bad, but it has been like this for a long time', and 'OK'. The article text mentions that the evening rush hour has begun with congestion bringing some central city streets to a standstill, and that officials warn congestion could worsen over coming months with 40 separate crews currently digging up roads within the central city.

- 25,000 hits
- 335 comments
- “we a in a rebuild, this is expected”
- “manage the work programme better”
- “more cycle, PT etc trips”
- “poor historic planning therefore insufficient capacity”

Christchurch Transport Operations Centre



Planned Event Example – 7th March

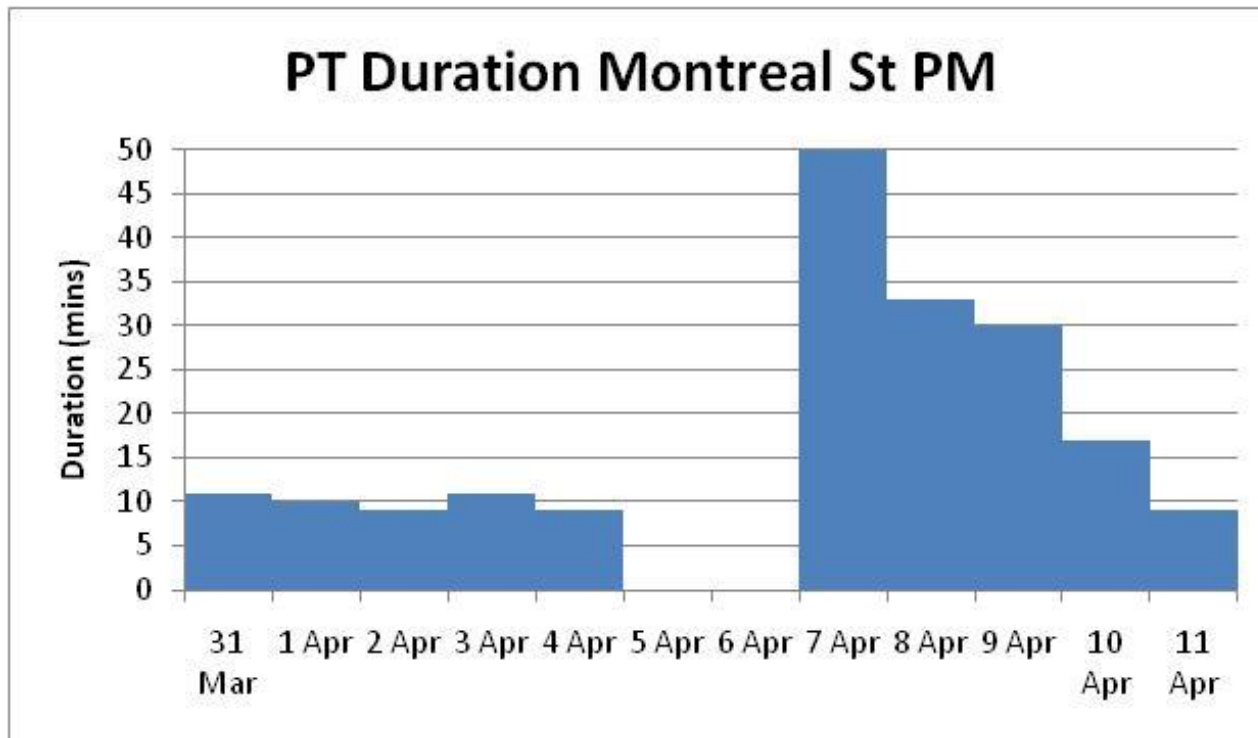
- No chronic issue – sufficient network wide capacity
- Acute issue – cannot avoid need for lane reductions on some major routes (Durham and Montreal)
- Required that travellers re-route – traveller information delivered prior

Christchurch Transport Operations Centre



Planned Event Example – 7th March

- 7th March - Observations

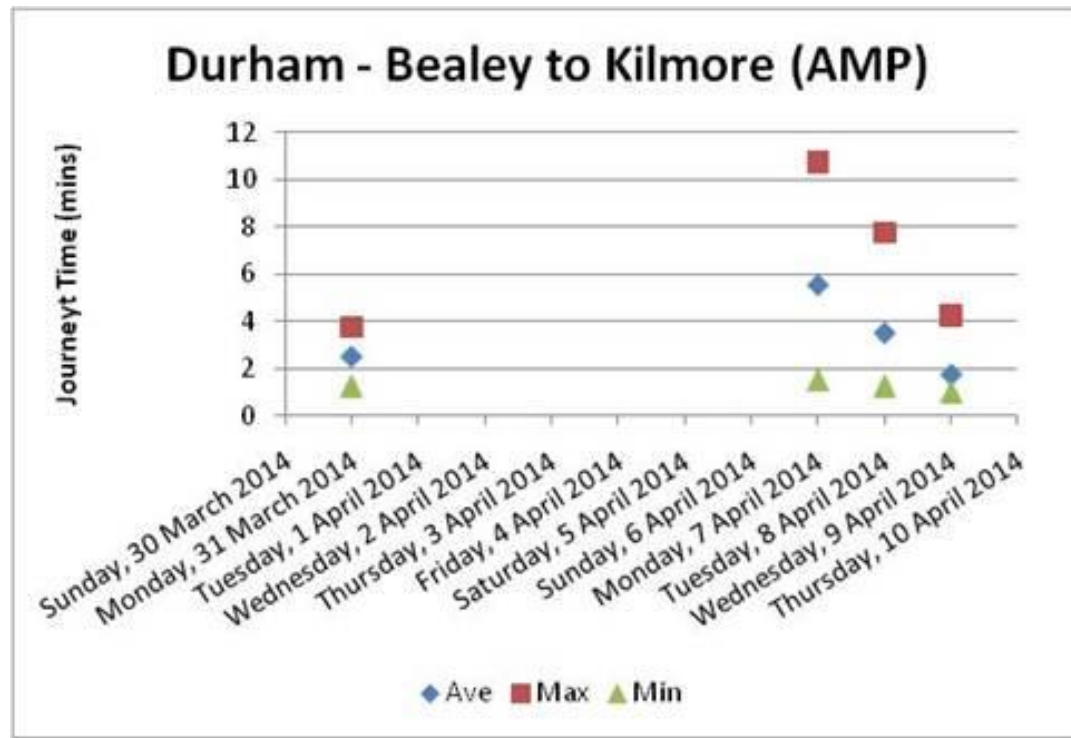


Christchurch Transport Operations Centre



Planned Event Example – 7th March

- 7th March - Observations



Christchurch Transport Operations Centre



Key Messages

- Operations is:
 - Managing events (3 types)
 - Real time
 - Supply and demand interventions
- One Network approach essential
- Universal goal:
 - Make better use of the existing network

Christchurch Transport Operations Centre



Questions



Christchurch Transport Operations Centre

