



Predicting Future Freight Demand

28 November 2014

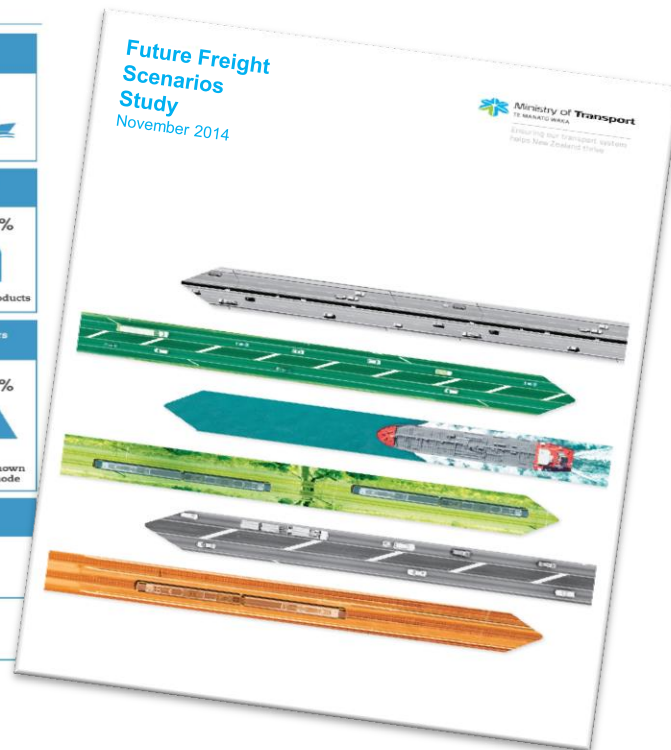
Information is key to improving infrastructure planning and investment and the efficiency of freight markets



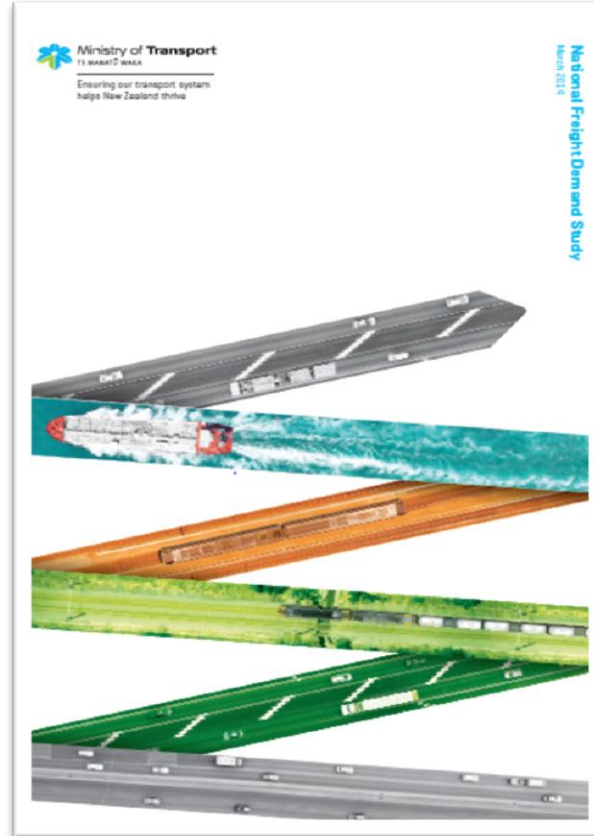
Key findings: January 2013 - December 2013

Largest TEU imports/exports by location		Coastal container traffic			
	41.7% Imported through Ports of Auckland	74% of coastal TEUs were moved on international ships*			
	41.2% Exported through Port of Tauranga	<small>*see glossary for a definition of TEU and international ship</small>			
Most exported commodities (value) Commodities are both bulk and containerised		Most exported commodities (volume) Commodities are both bulk and containerised			
31.4% Dairy products	12.0% Meat products	9.8% Foodstuffs	53.4% Wood	13.7% Minerals, coal and fuel	7.6% Dairy products
Rail: top 3 commodities (volume)		Land transportation mode of containers to/from port			
21.0% 3,730,067 tonnes Dairy & milk	18.4% 3,274,164 tonnes Wood	16.3% 2,895,432 tonnes Coal	74.3% by road (excludes Centreport)	21.7% by rail	4.0% by unknown land mode
Exports/Imports of 20ft and 40ft containers					
20ft. Exports 74% full Imports 89% full			40ft. Exports 87% full Imports 70% full		
0ft. Exports 99% full Imports 19% full			40ft. Exports 94% full Imports 38% full		

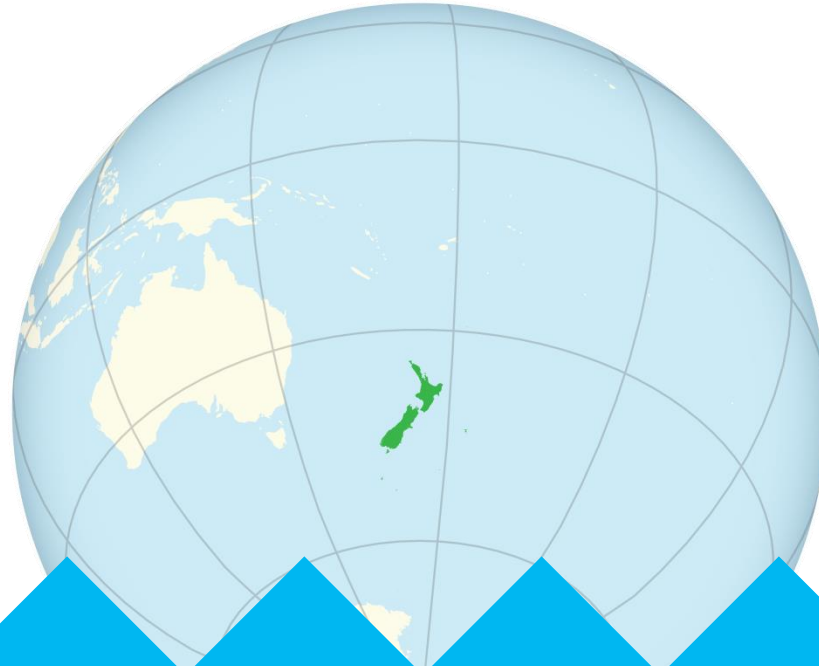
Refrigerated



National Freight Demand Study 2014



A lot has changed since the 2008 study



global
financial crisis

climatic
events

international
shipping
patterns

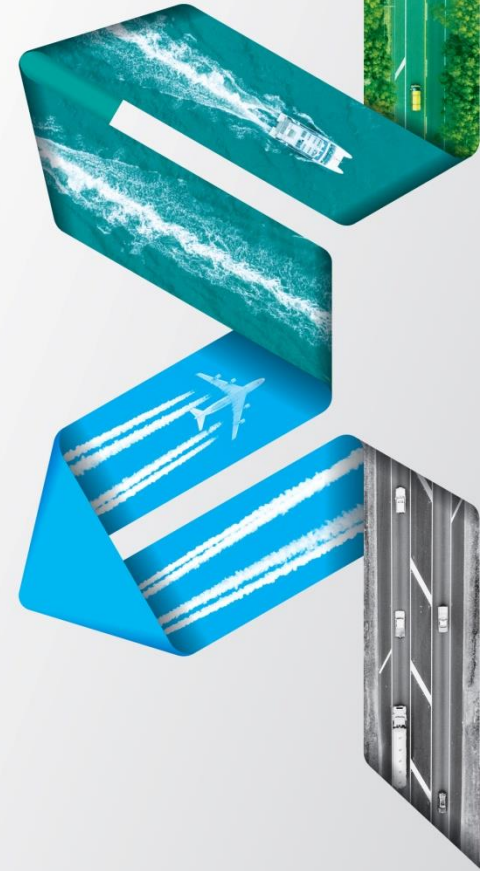
online
shopping

growth of the
services
sector

new transport
policies

A robust and comprehensive study

- Commodity based
- Extensive data analysis
- Published forecast
- 170 Interviews



The current freight task is substantial



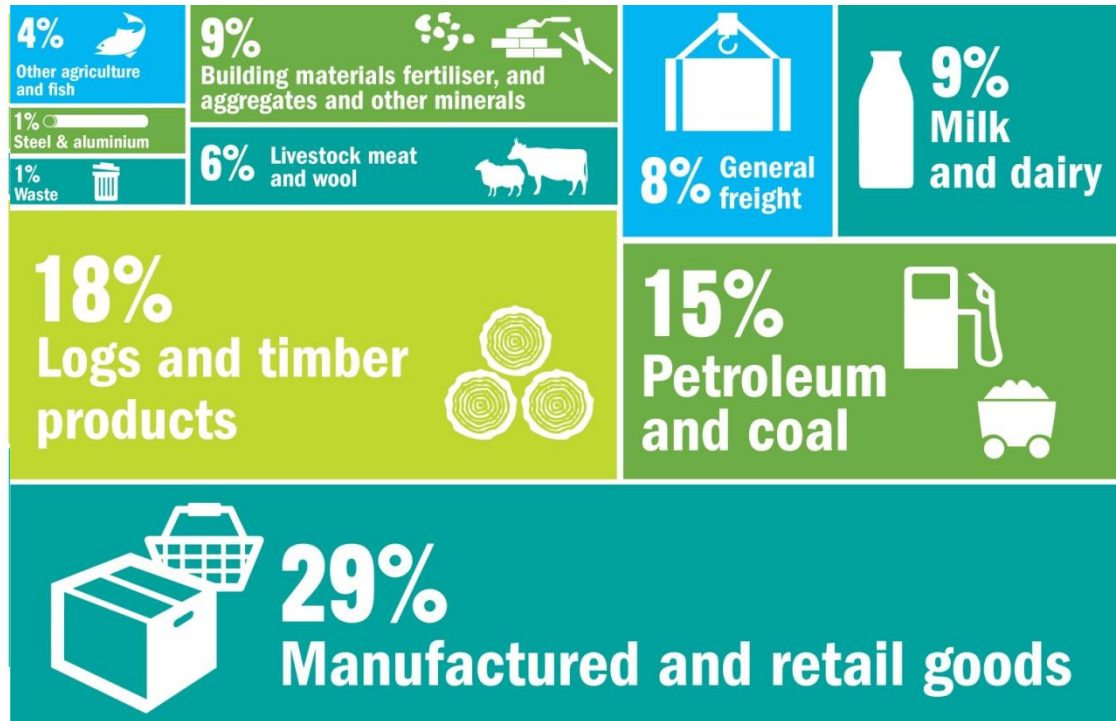
236m
tonnes



In both tonnes and tonne-kilometres

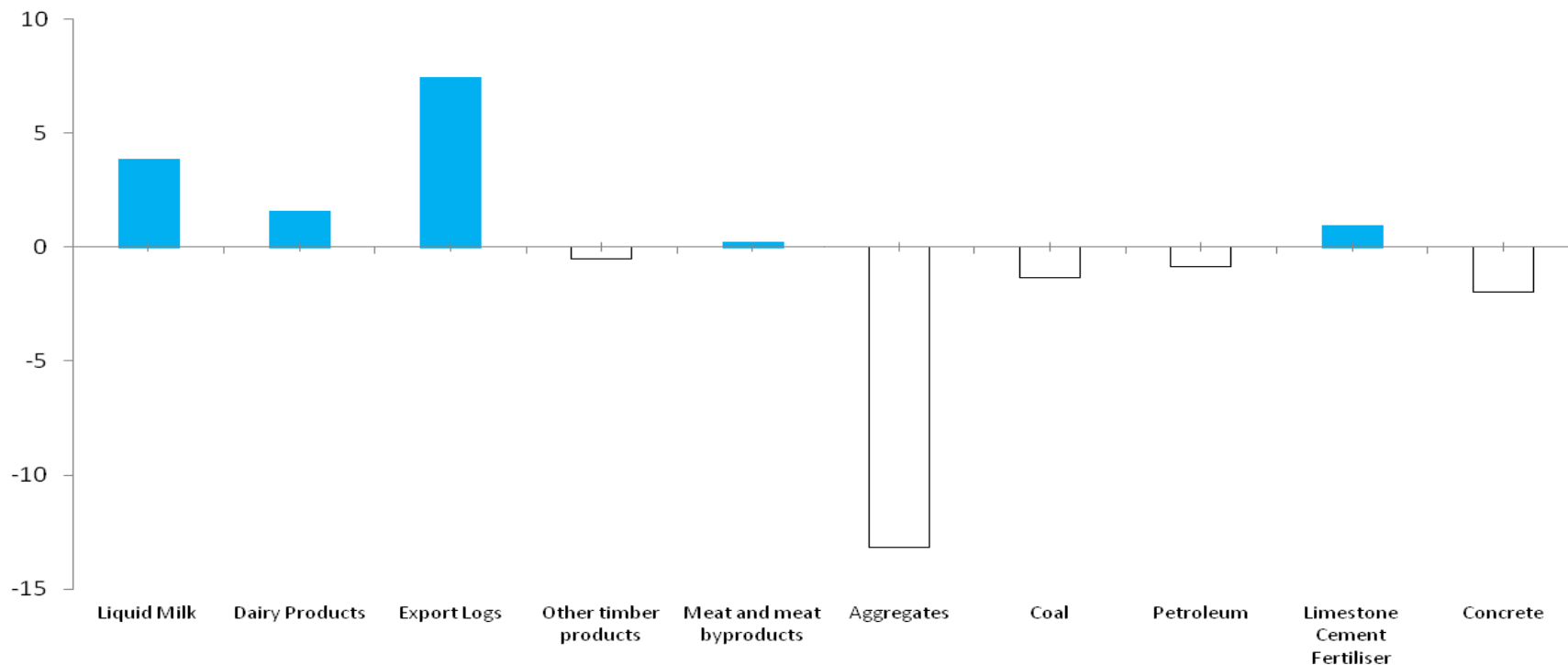


26.3b
tonne-km



Changes in flows of key commodities 2006 to 2012

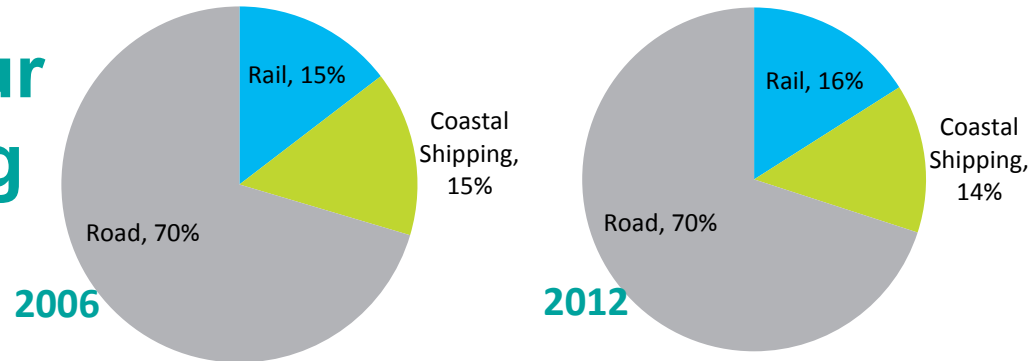
million tonnes



Currently the growth area is rail...



...but roads remain our main mode for moving freight



Modal Shares by Commodity tonne-kilometres

The freight task is set to rise significantly by 2042

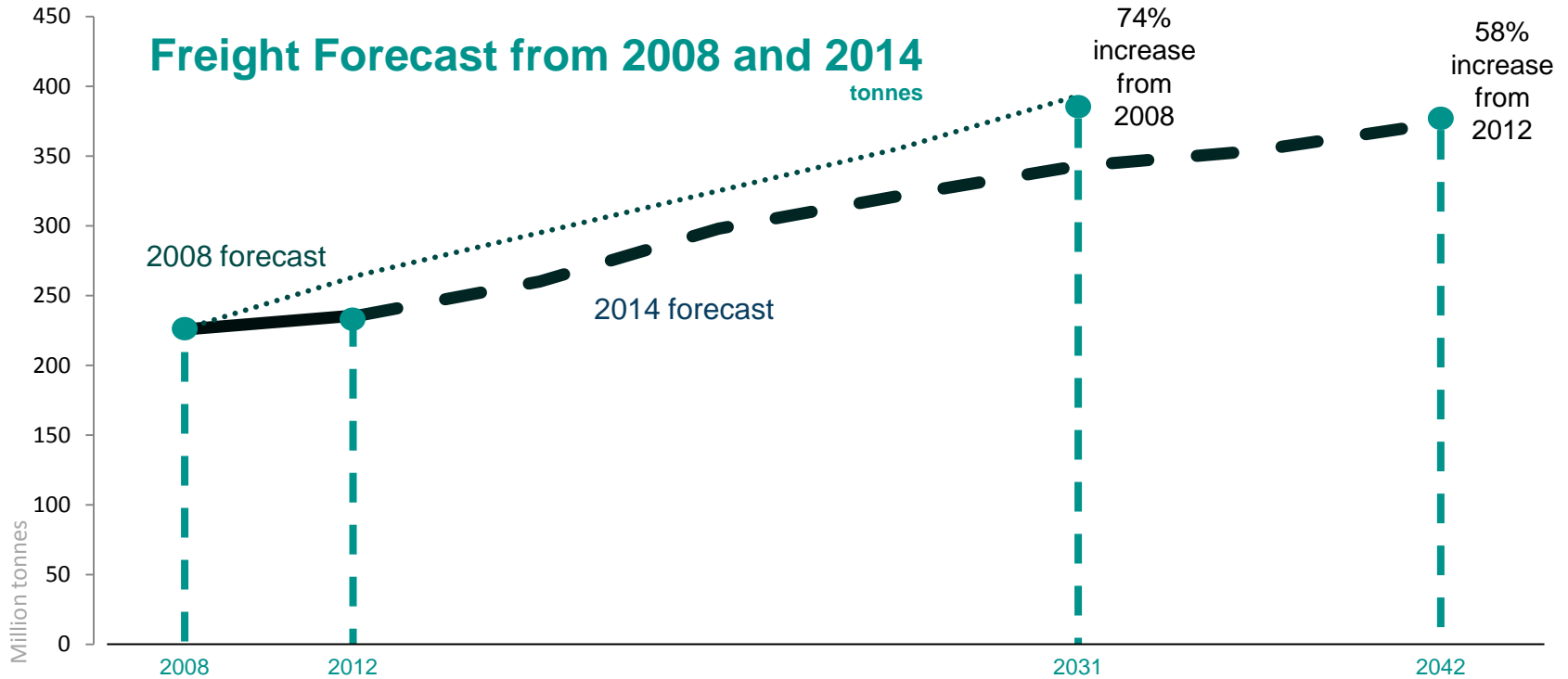


236_m
tonnes

58%

373_m
tonnes

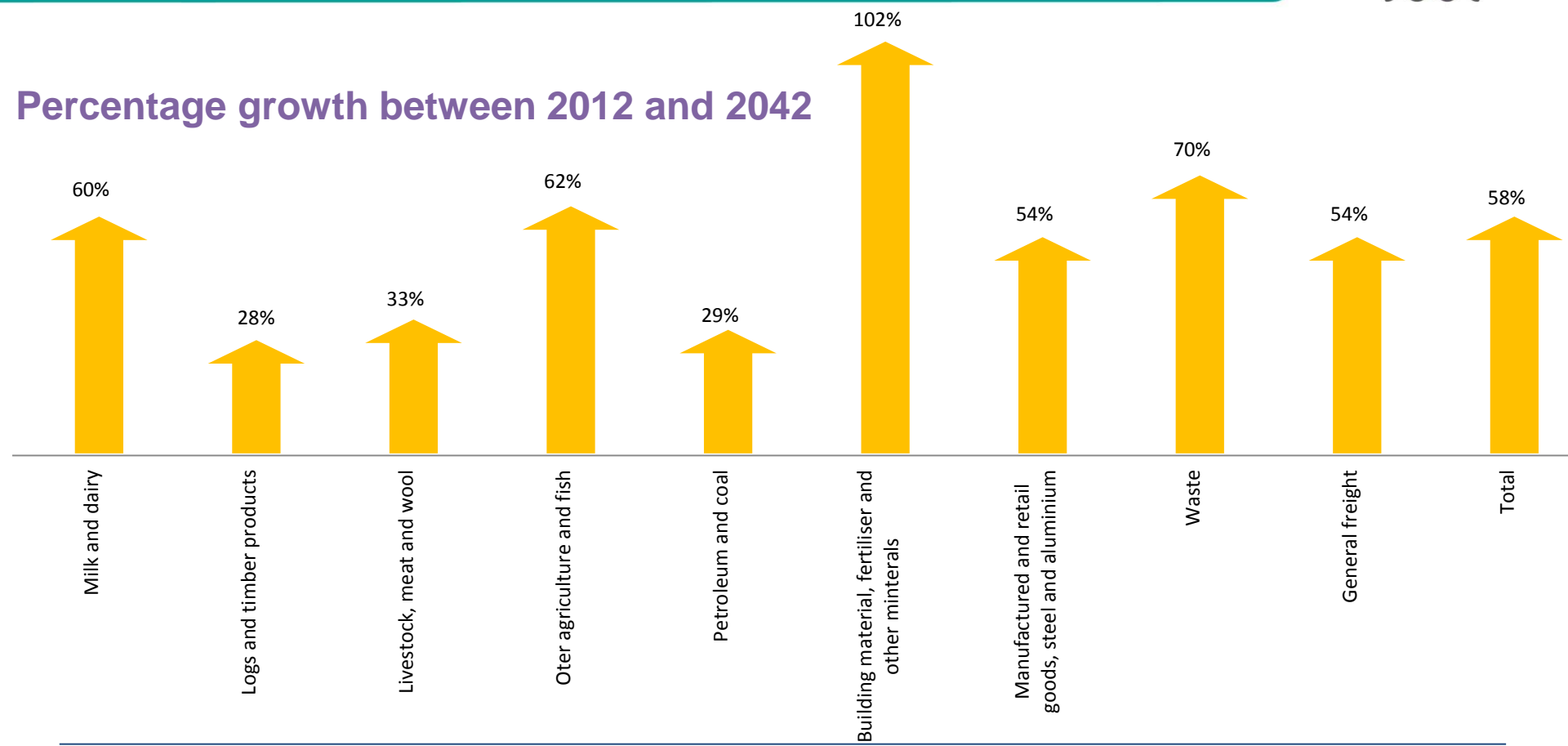
Freight is expected to grow substantially but not by as much as we had thought



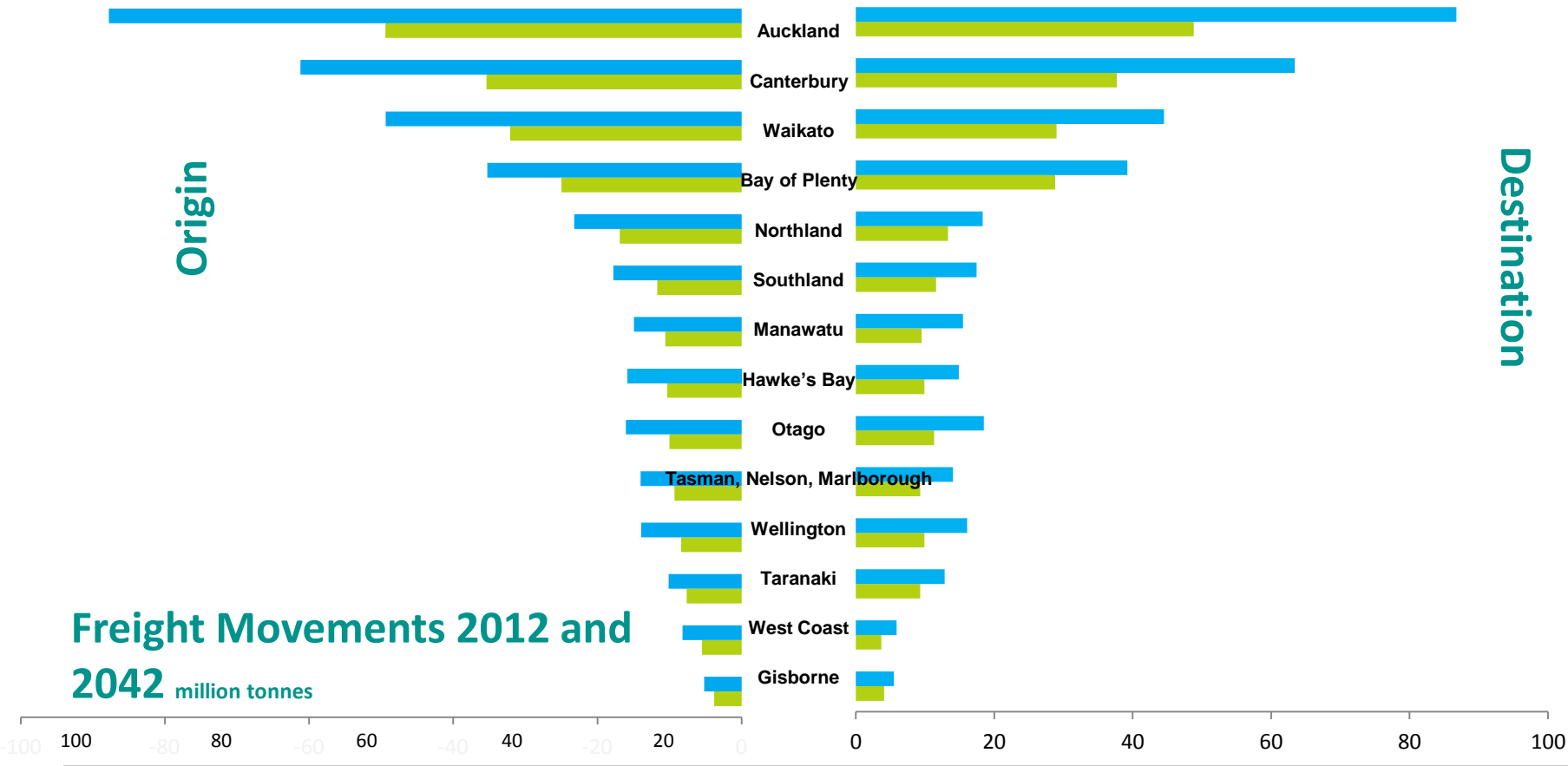
Increase in the freight forecast by broad commodity



Percentage growth between 2012 and 2042



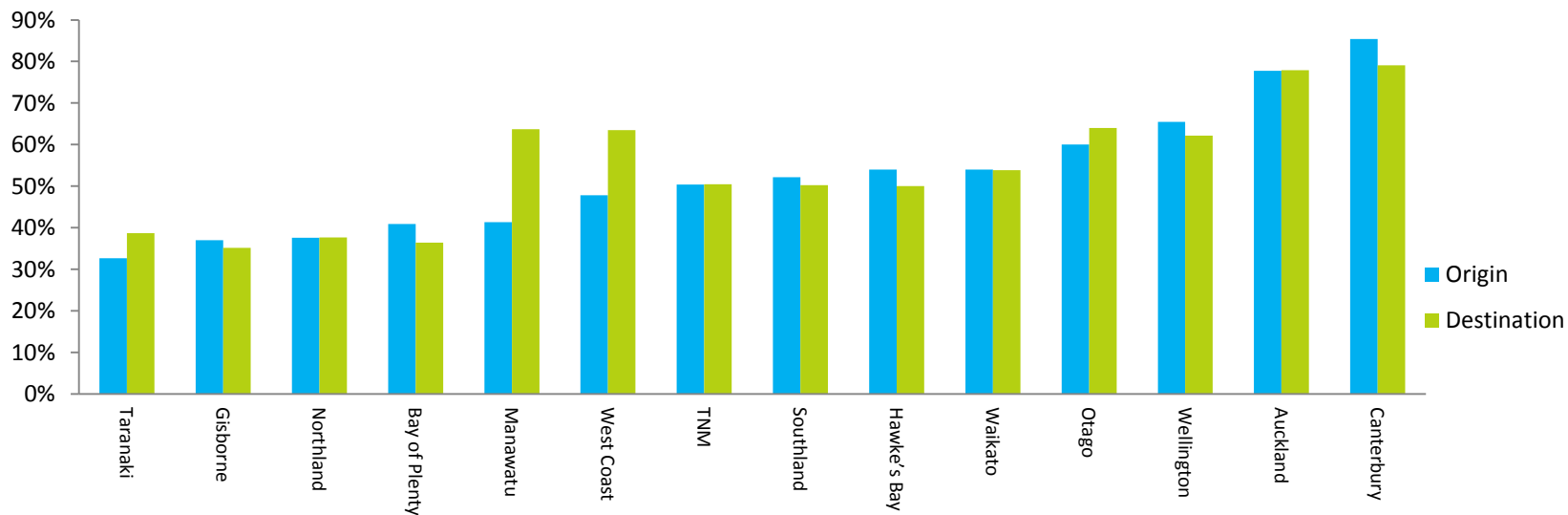
The Upper North Island is important for freight – both as a destination and the origin of freight



Freight Movements 2012 and 2042 million tonnes

There is growth in all the regions

– but it is particularly strong in Auckland and Canterbury



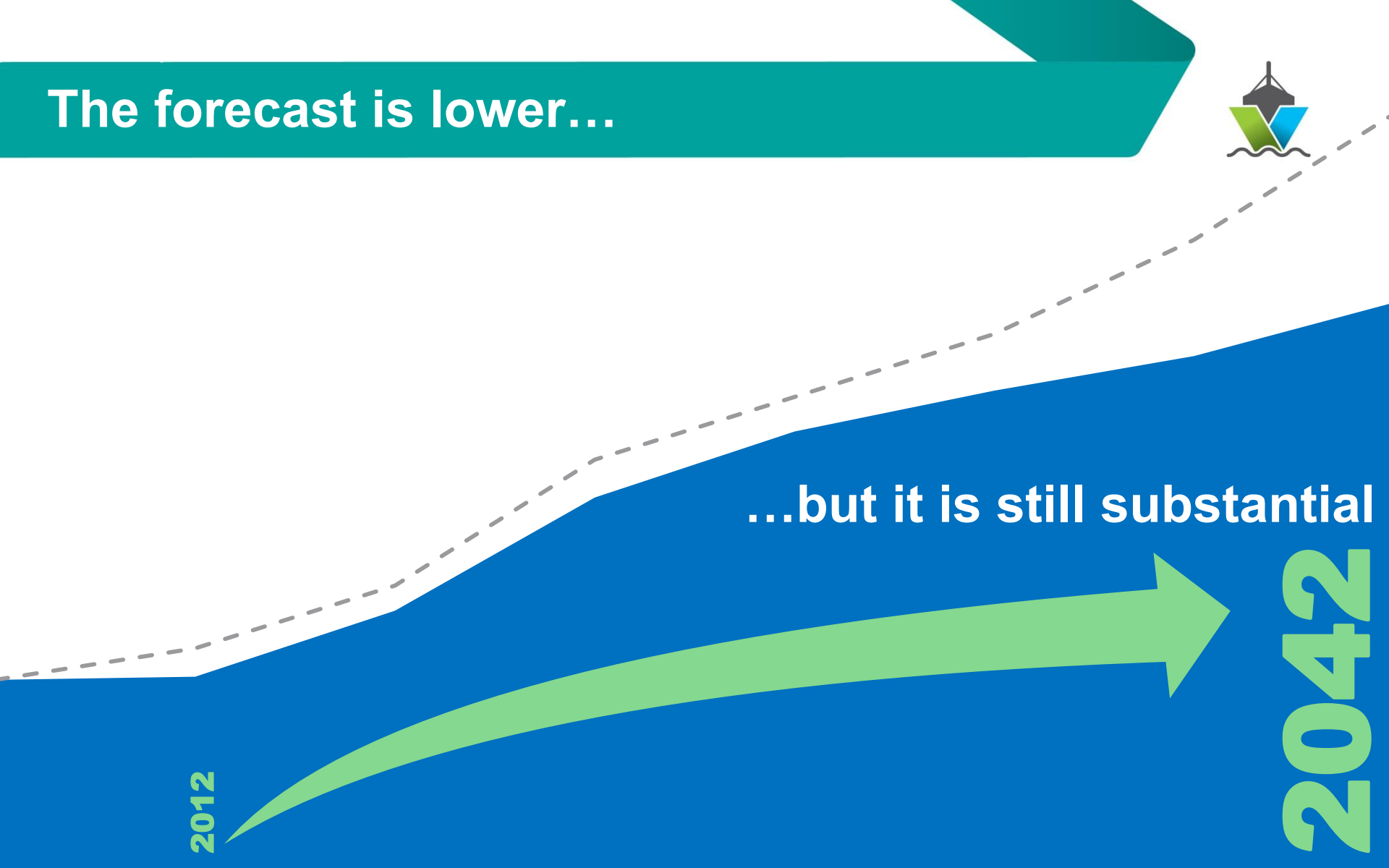
The forecast is lower...



...but it is still substantial

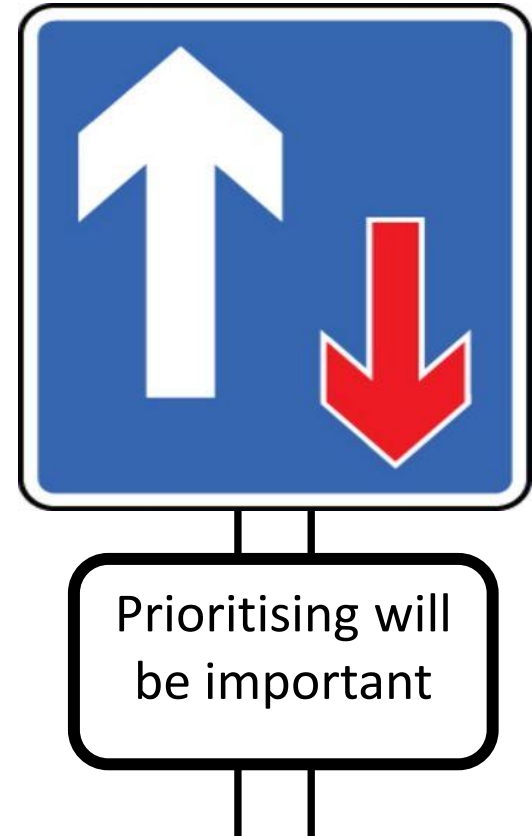
2012

2042





**Growth will be greatest
in regions that are already
under pressure**





Innovation and technology will increase the efficiency of the freight system



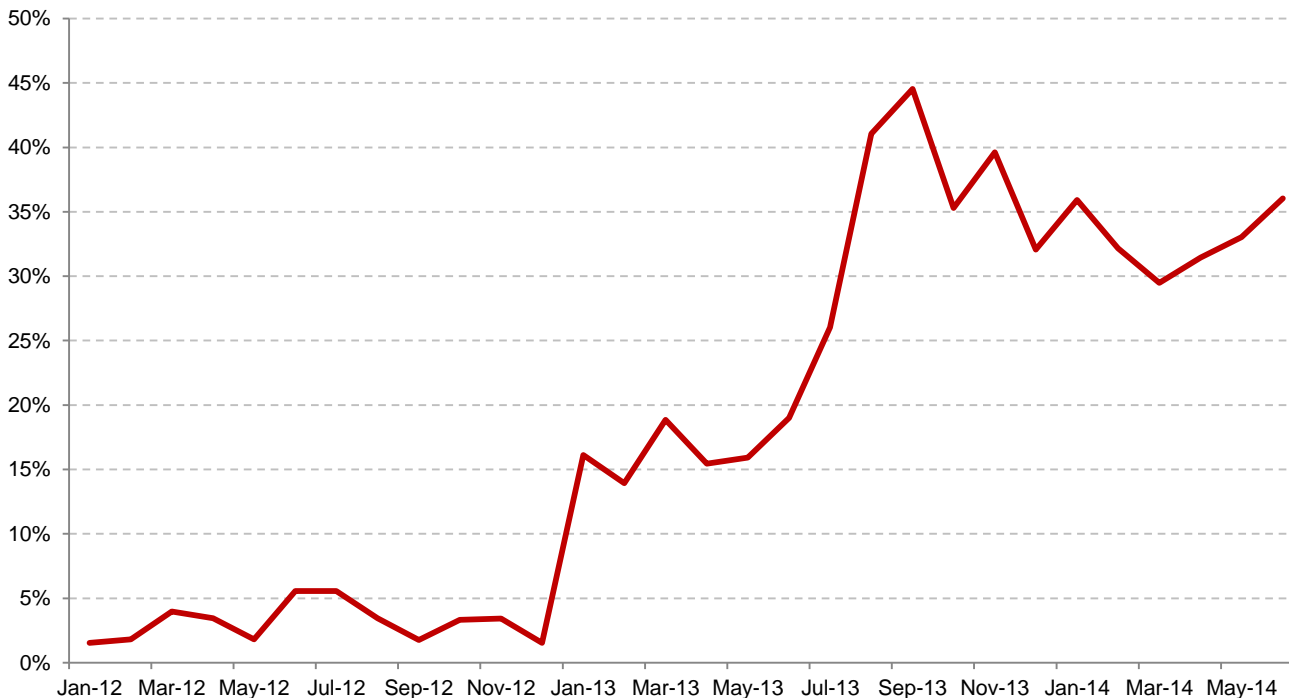
What next....?





Like other countries we are seeing a trend to larger international container ships

Share of containerised exports and imports on 4,000+ TEU ships



A 20 foot container is one TEU and a 40 foot container is two TEU

www.transport.govt.nz

Thank you

